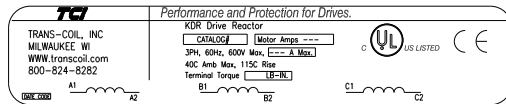


| CATALOG NO | VOLTAGE | NEC MOTOR HP | NEC MOTOR CURRENT | WATTS LOSS | APPROX. WEIGHT-LBS | TORQUE (LB-IN) |
|--------------|---------|--------------|-------------------|------------|--------------------|----------------|
| KDRULA26LE01 | 208/240 | 1.5 | 6.60 | 18 | 14.50 | 10 |



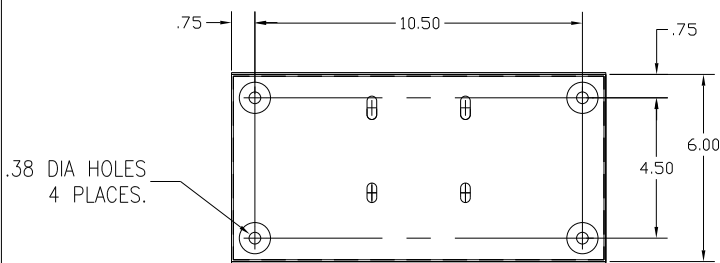
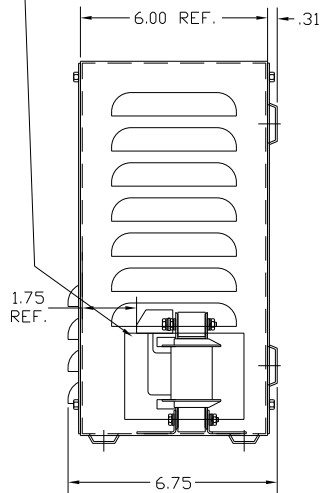
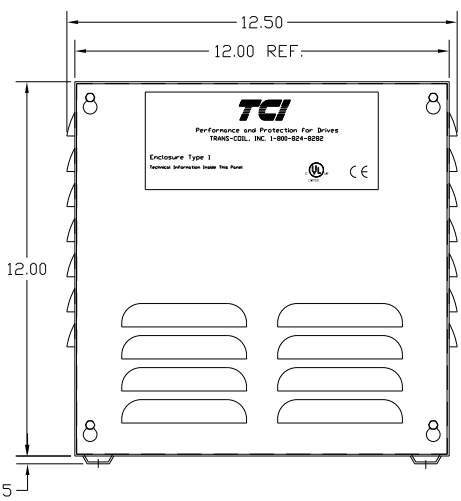
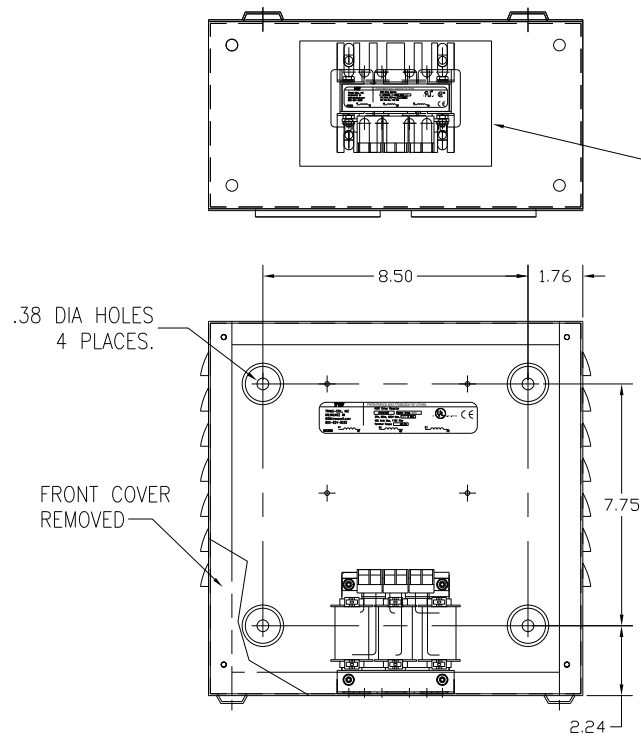
LABEL PLACED ON INSIDE WALL OF CABINET.

NOTE 1: WATTS LOSS WILL VARY DUE TO FUNDAMENTAL FREQUENCY, CARRIER FREQUENCY AND OTHER SYSTEM CHARACTERISTICS.

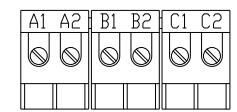
KDR DRIVE REACTORS COMPLY WITH THE THERMAL AND ALTITUDE STANDARDS SET FORTH BY NEMA ST20-1992..

NEC MOTOR CURRENTS SHOWN IN THE 208/240 VOLT CHART ARE BASED ON HORSEPOWER AT 208 VOLT. 575/600 VOLT CHART USE THE 575 VOLT CURRENT RATING.

RECOMMENDED CONDUIT ENTRANCE AREA
TOP, LOWER LEFT SIDE, AND LOWER RIGHT SIDE.



CUSTOMER IS RESPONSIBLE FOR INSTALLATION TO MEET ALL LOCAL AND NATIONAL CODES



TERMINAL BLK MARKING

NOTE: A1, A2, B1, B2, C1, C2, TERMINAL BLOCK FOR REFERENCE ONLY.

BLOCK WIRE RANGE FOR REACTOR AND TIGHTENING TORQUE. #12-#18 AWG 10 LB-IN

VENDOR LILLY POWDER COATINGS, INC.
PRODUCT CODE 312E
COLOR PEBBLE GRAY
POWDER TYPE POLYESTER POLYURETHANE

PAINT SUITABLE FOR OUTDOOR APPLICATION PER UL TYPE 3R AND APPLIED PER A UL ACCEPTED DTW2 COATING PROGRAM.

| | | | | | | |
|----|----------|------|----|-------------------------------|--------------|-----------------------------------------------------------------------------------------------|
| | | | | TOLERANCES (EXCEPT AS NOTED): | | 7878 N. 86th STREET MILWAUKEE, WI 53224 KDR DRIVE REACTOR 240V, ENCLOSED, TYPE 1 |
| | | | | DECIMAL | | |
| | | | | .XX ± .03 | | |
| | | | | .XXX ± .01 | | |
| | | | | FRACTIONAL ± 1/32 | | |
| | | | | ANGULAR ± 1/2° | | |
| NO | REVISION | DATE | BY | DRN. BY DSW | DATE 6/24/04 | DWG. NO. B KDRULA26LE01DG |
| | | | | SCALE | APRVD. | SHT. 1 OF 1 |