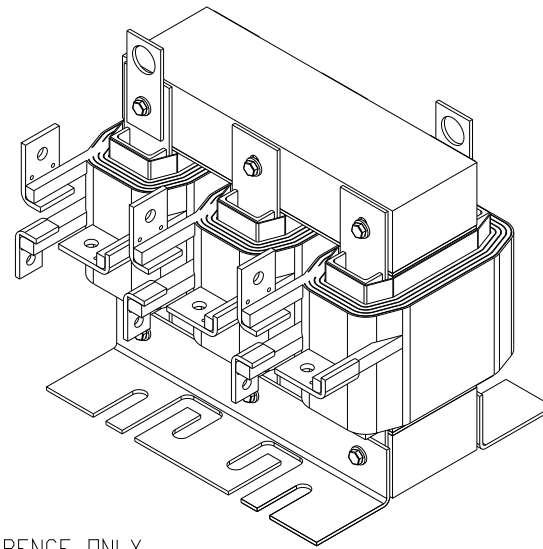
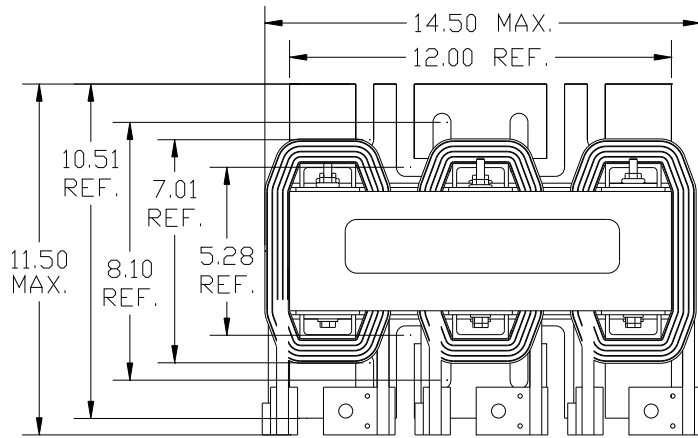


HP	CATALOG NO	_ _AMPS(A)	APPROX WT-LBS
200	KDRS4TT	240	165



TCI Performance and Protection for Drives.

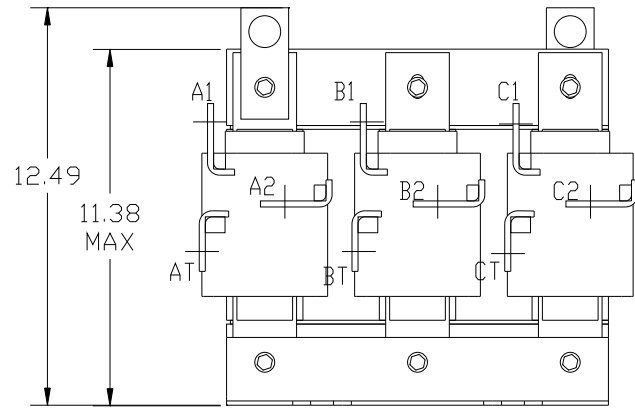
TRANS-COIL, INC
MILWAUKEE WI
WWW.transcoil.com
800-824-8282

KDR Drive Reactor
[REACTOR] Motor Amps ---Max.
3PH, 60Hz, 600V Max. --- & Rated.
40C Amb Max, 155C Rise

UL[®] US CSA[®] CE

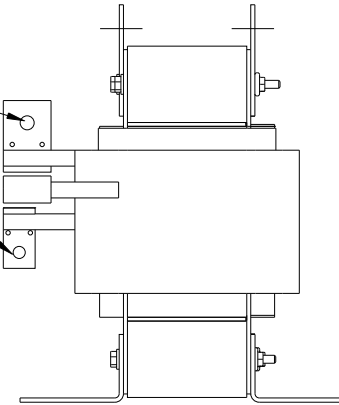
040K000 A1 A1' A2 B1 B1' B2 C1 C1' C2

A1, AT, A2, B1, BT, B2, C1, CT, C2, MARKINGS FOR REFERENCE ONLY

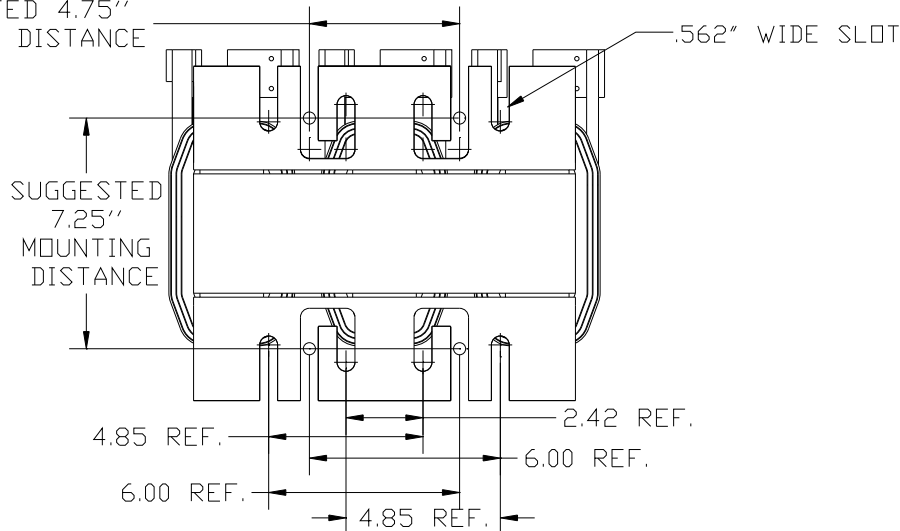


.44 DIA HOLE
6 PLACES.

.375 DIA HOLE
3 PLACES.



SUGGESTED 4.75"
MOUNTING DISTANCE



TOLERANCES (EXCEPT AS NOTED)				TCI 7878 N. 86th STREET MILWAUKEE, WI 53224	
DECIMAL				KDRS4TT	
.XX ± .03				200HP, HGP FILTER REACTOR	
.XXX ± .01				DRN BY DSW	DATE 5/13/2013
FRACTIONAL ± 1/32				SCALE TO FIT	APRVD C
ANGULAR ± 1/2°				DWG NO 105268DG	
NO	REVISION	DATE	BY	SHT.1 OF1	