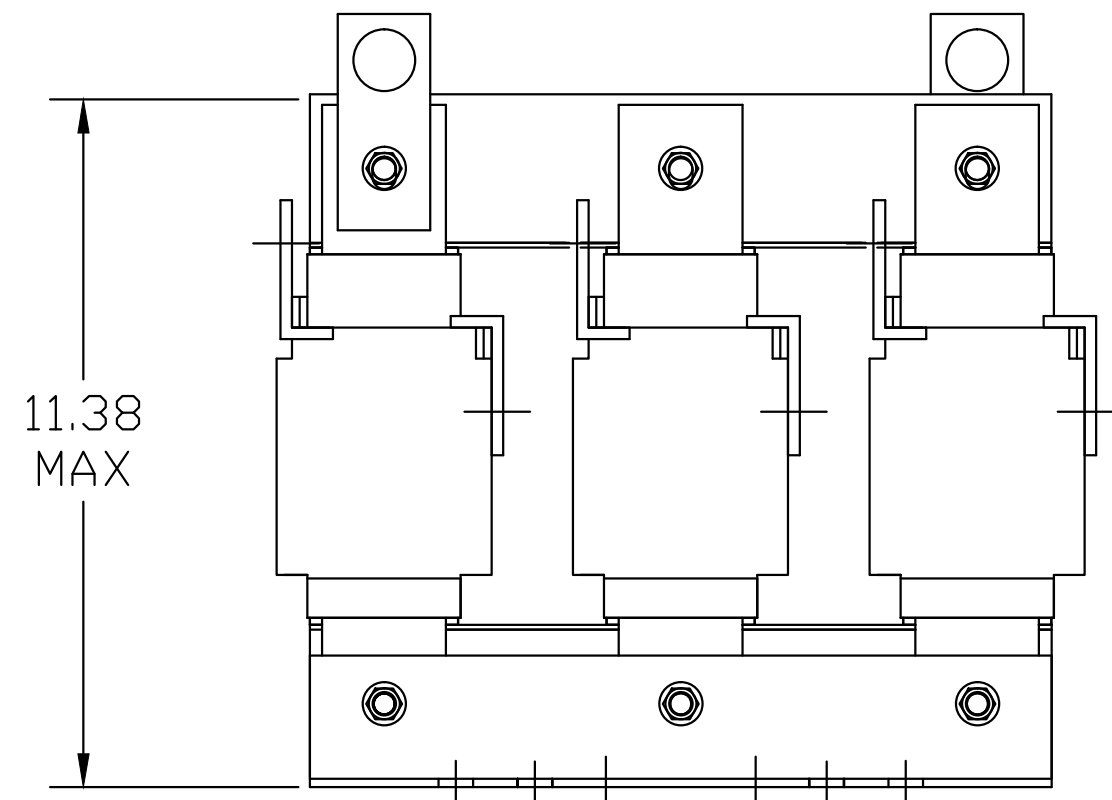


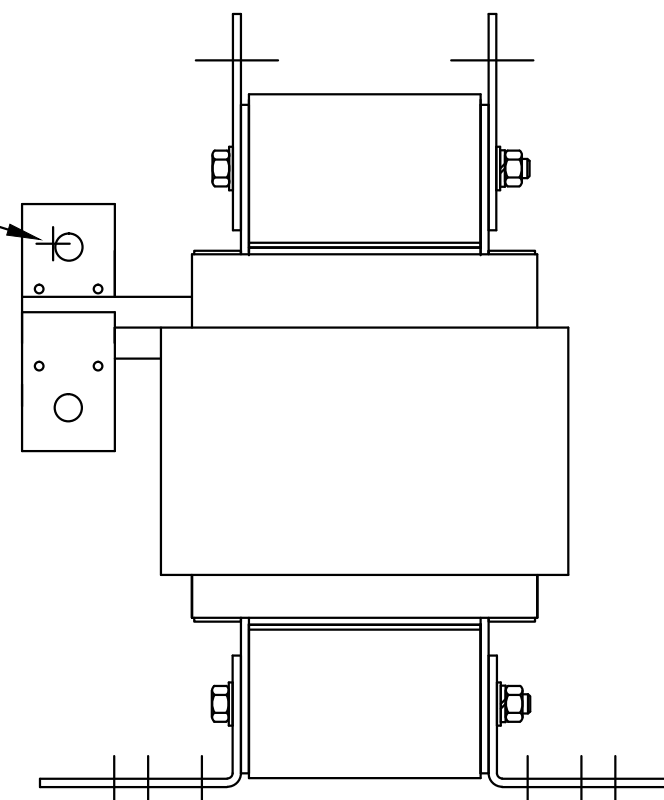
HP	CATALOG NO	--mH ±20%	--AMPS(A)	APPROX WT-LBS
250	KDRS42T	.380	242	170

TCI PERFORMANCE AND PROTECTION FOR DRIVES.
 TRANS-COIL, INC MILWAUKEE WI WWW.transcoil.com 800-824-8282
 KDR Drive Reactor
 CATALOG# MOTOR HP AMPS 3PH, 60Hz, 600V Max, --- A Max. 40C Amb Max, 155C Rise
 DATE CODE A1 A2 B1 B2 C1 C2

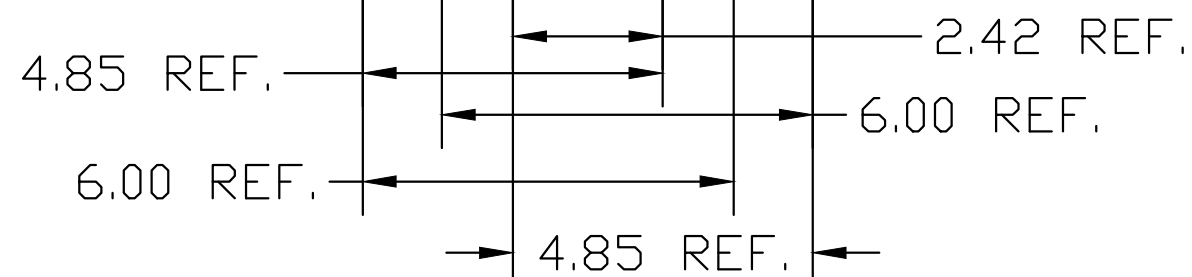
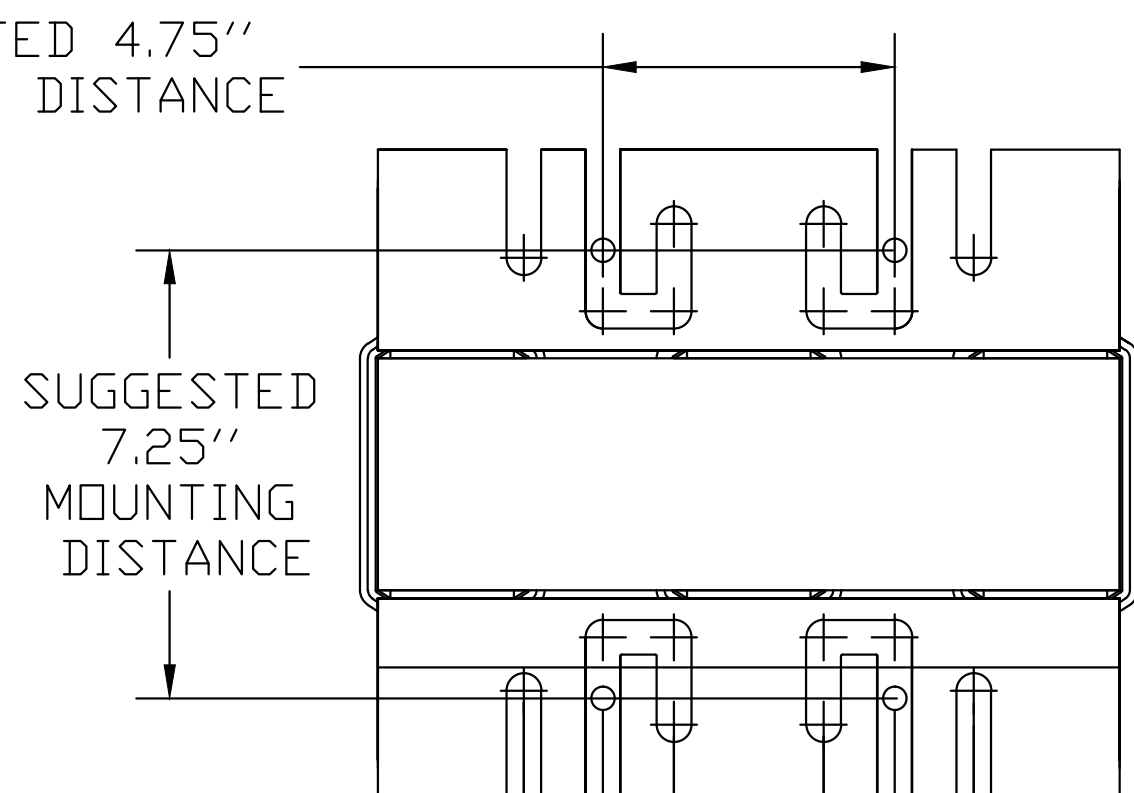
UL[®] US SA[®] CE



.44 DIA HOLE
6 PLACES.



SUGGESTED 4.75"
MOUNTING DISTANCE



TCI, LLC CLAIMS PROPRIETARY RIGHTS IN THE MATERIAL HEREIN DISCLOSED. IT IS SUPPLIED WITHOUT PREJUDICE TO ANY PATENT RIGHTS OF TCI AND MAY NOT BE REPRODUCED OR USED TO MANUFACTURE ANYTHING SHOWN THEREIN WITHOUT WRITTEN PERMISSION FROM TCI.				TOLERANCES (EXCEPT AS NOTED)	W132 N10611 Grant Drive Germantown, WI 53022 KDR (FRAME S) KDRS42T, 250HP, 600V 10% DRN. BY DSW DATE 1/25/05 DWG. NO. 102393DG SCALE TO FIT SIZE C SHT. 1 OF 1
				DECIMAL	
				.XX ±.02	
				.XXX ±.01	
				FRACTIONAL ± 1/32	
			ANGULAR ± 1/2°		