

HP	CATALOG NO	--mH ±20%	--AMPS(A)	APPROX WT-LBS
200	KDRS41T	.480	192	150

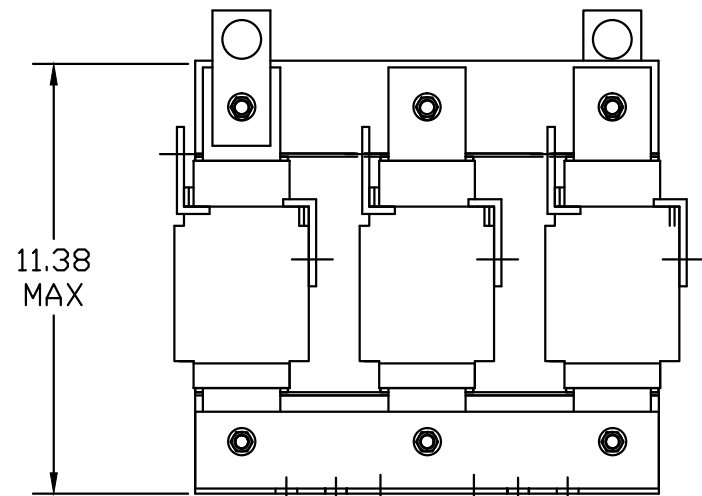
**TCI** PERFORMANCE AND PROTECTION FOR DRIVES.

TRANS-COIL, INC  
MILWAUKEE WI  
WWW.transcoil.com  
800-824-8282

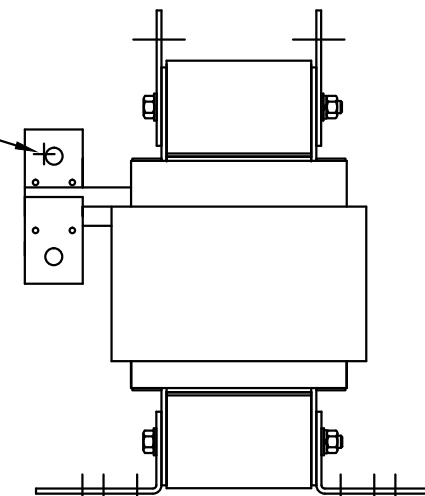
KDR Drive Reactor  
CATALOG# [ ] MOTOR HP AMPS [ ]  
3PH, 60Hz, 600V Max, [ ] A Max.  
40C Amb Max, 155C Rise

DATE CODE [ ] A1 [ ] A2 [ ] B1 [ ] B2 [ ] C1 [ ] C2

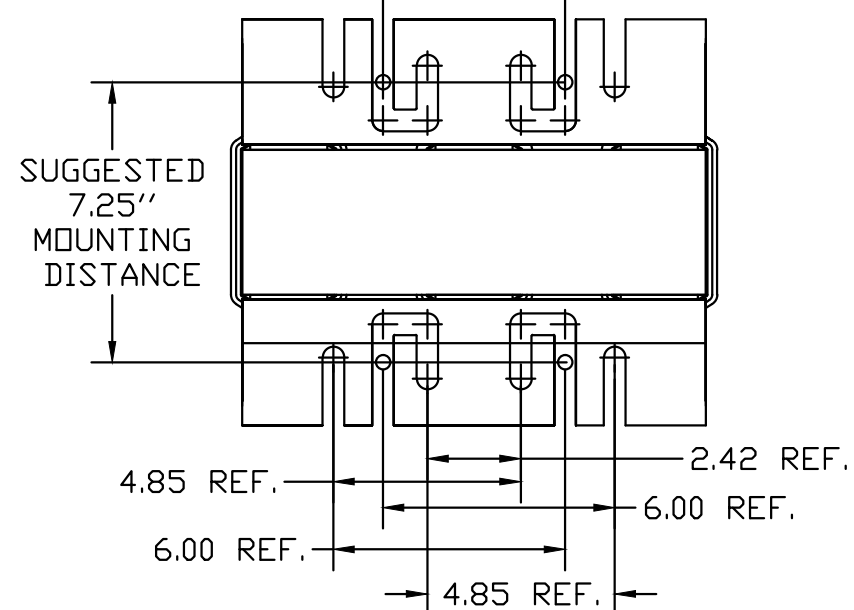
UL<sup>®</sup> SA<sup>®</sup> CE



.44 DIA HOLE  
6 PLACES.



SUGGESTED 4.75"  
MOUNTING DISTANCE



TCI, LLC CLAIMS PROPRIETARY RIGHTS IN THE MATERIAL HEREIN DISCLOSED. IT IS SUPPLIED WITHOUT PREJUDICE TO ANY PATENT RIGHTS OF TCI AND MAY NOT BE REPRODUCED OR USED TO MANUFACTURE ANYTHING SHOWN THEREIN WITHOUT WRITTEN PERMISSION FROM TCI.

NO	REVISION	DATE	BY

**TCI**® W132 N10611 Grant Drive  
Germanstown, WI 53022

KDR (FRAME S)  
KDRS41T, 200HP, 600V 10%

DRN. BY DSW DATE 01/25/05 DWG NO. DWGNO  
SCALE TO FIT SIZE B SHT.1 OF 1

TOLERANCES (EXCEPT AS NOTED)
DECIMAL
.XX ±.02
.XXX±.01
FRACTIONAL
± 1/32
ANGULAR
± 1/2°