

CATALOG NO	--uH ±10%	--AMPS(A)	APPROX WT-LBS
KDRS31T	294	250	150

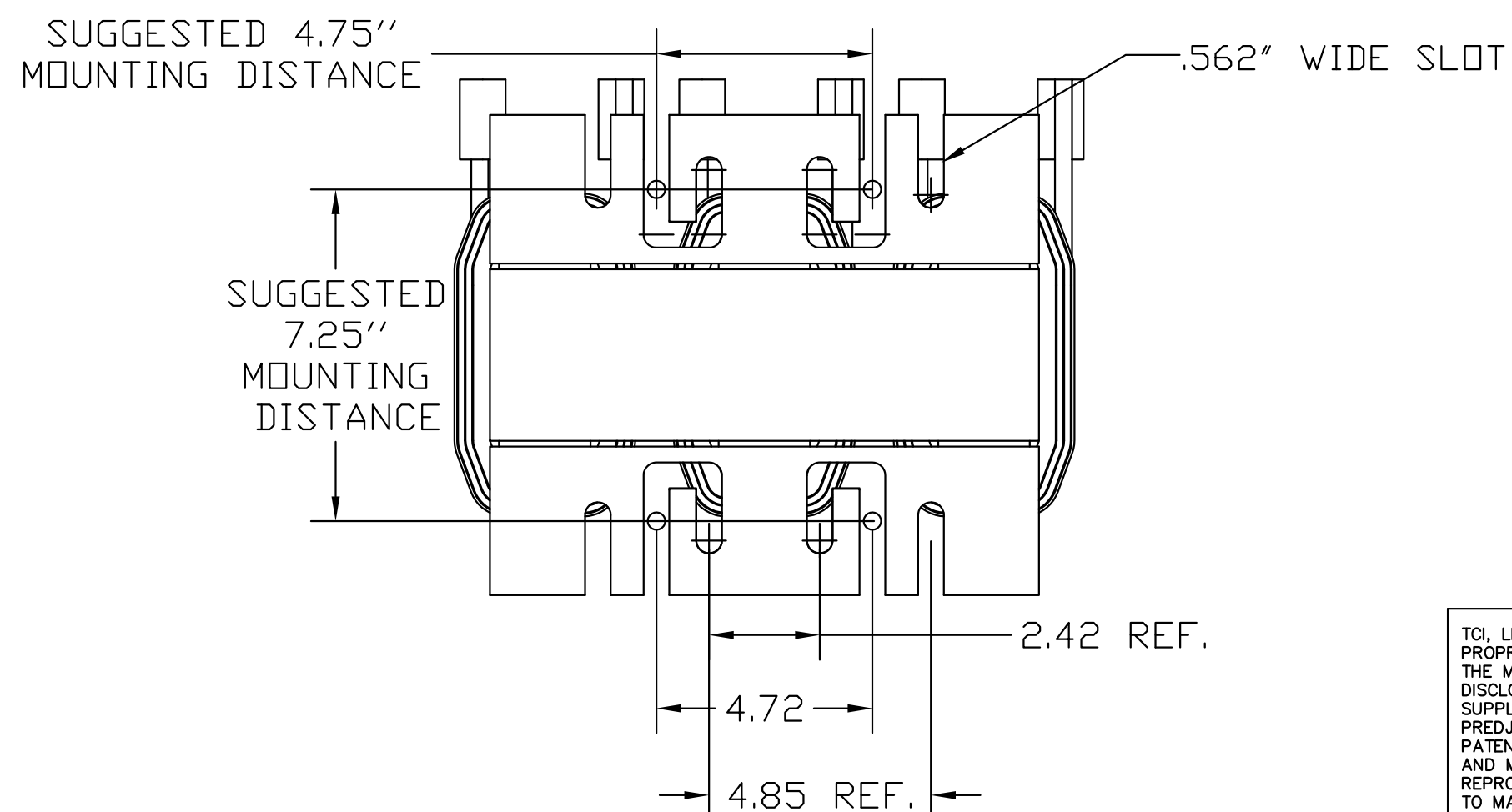
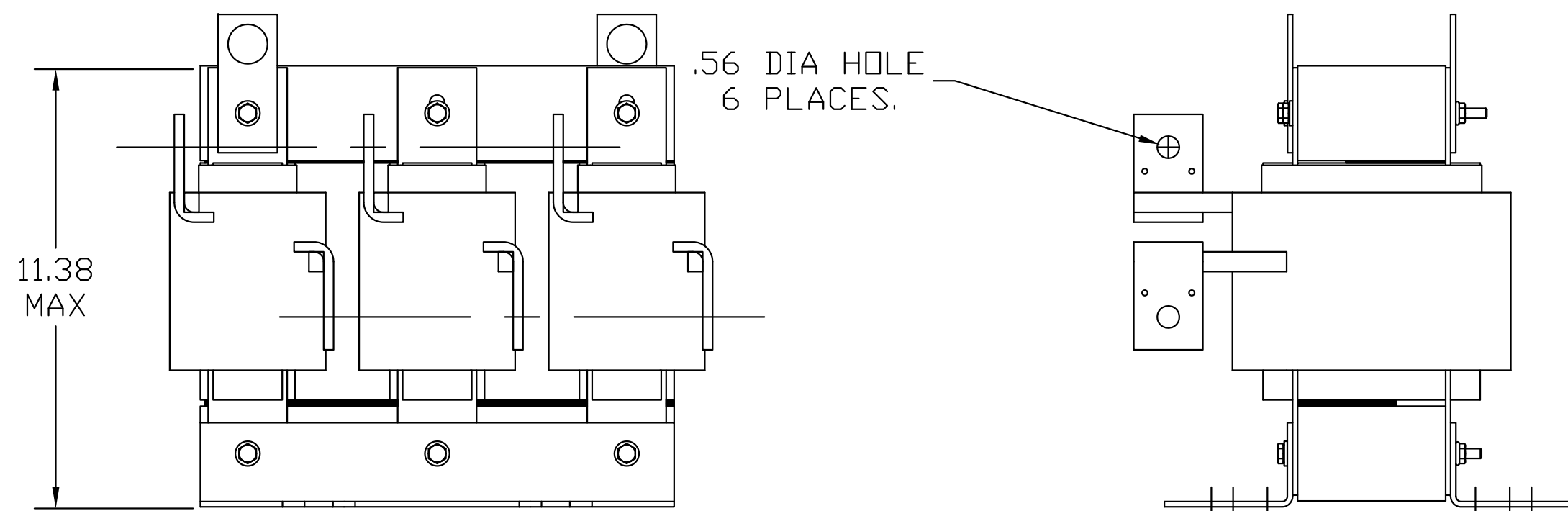
**TCI** Performance and Protection for Drives.

TRANS-COIL, INC  
MILWAUKEE WI  
WWW.transcoil.com  
800-824-8282

KDR Drive Reactor  
CATALOG# [ ] Motor Amps [ ]  
3PH, 60Hz, 600V Max, [ ] A Max.  
40C Amb Max, 155C Rise

UL<sup>®</sup> US SA<sup>®</sup> CE

DATE CODE A1 A2 B1 B2 C1 C2



TCI, LLC CLAIMS PROPRIETARY RIGHTS IN THE MATERIAL HEREIN DISCLOSED. IT IS SUPPLIED WITHOUT PREJUDICE TO ANY PATENT RIGHTS OF TCI AND MAY NOT BE REPRODUCED OR USED TO MANUFACTURE ANYTHING SHOWN THEREIN WITHOUT WRITTEN PERMISSION FROM TCI.

				TOLERANCES (EXCEPT AS NOTED)
				DECIMAL
				.XX ±.03
				.XXX ±.01
				FRACTIONAL
				± 1/32
				ANGULAR
				± 1/2°
A	AS RELEASED	10/25/10	DSW	
NO	REVISION	DATE	BY	

**TCI**<sup>®</sup> W132 N10611 Grant Drive  
Germanstown, WI 53022

KTR45L55HG, TRAP REACTOR  
110kW, 400V

DRN. BY DSW DATE 10/25/10 DWG. NO. 104494DG  
SCALE TO FIT SIZE C SHT.1 OF 1