

HP	CATALOG NO	--mH ±20%	--AMPS(A)	APPROX WT-LBS
250	KDRS2T	.243	302	160

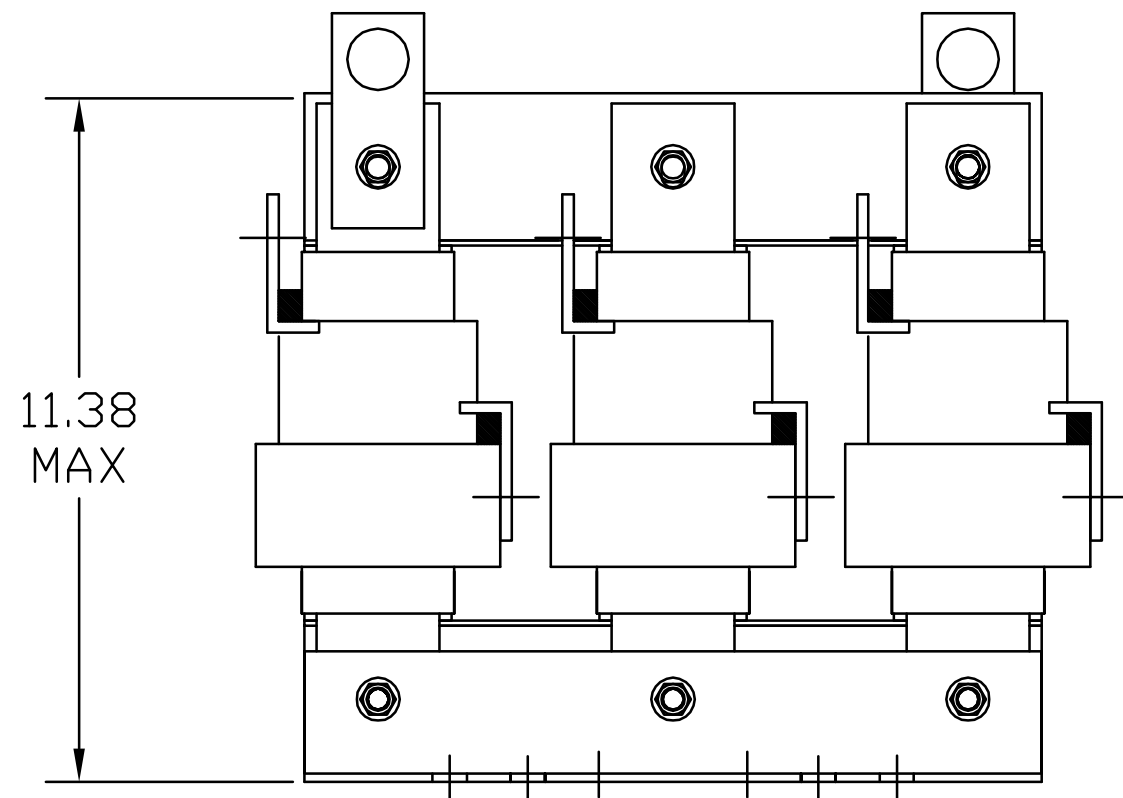
TCI PERFORMANCE AND PROTECTION FOR DRIVES.

TRANS-COIL, INC
MILWAUKEE WI
WWW.transcoil.com
800-824-8282

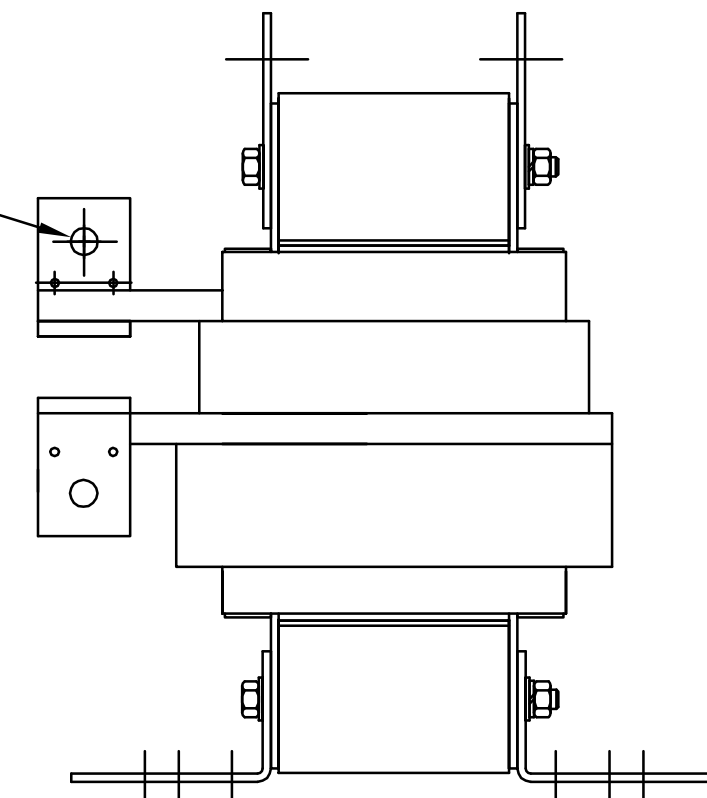
KDR Drive Reactor
CATALOG# [] MOTOR HP AMPS []
3PH, 60Hz, 600V Max, [] A Max.
40C Amb Max, 155C Rise

DATE CODE [] A1 [] A2 [] B1 [] B2 [] C1 [] C2

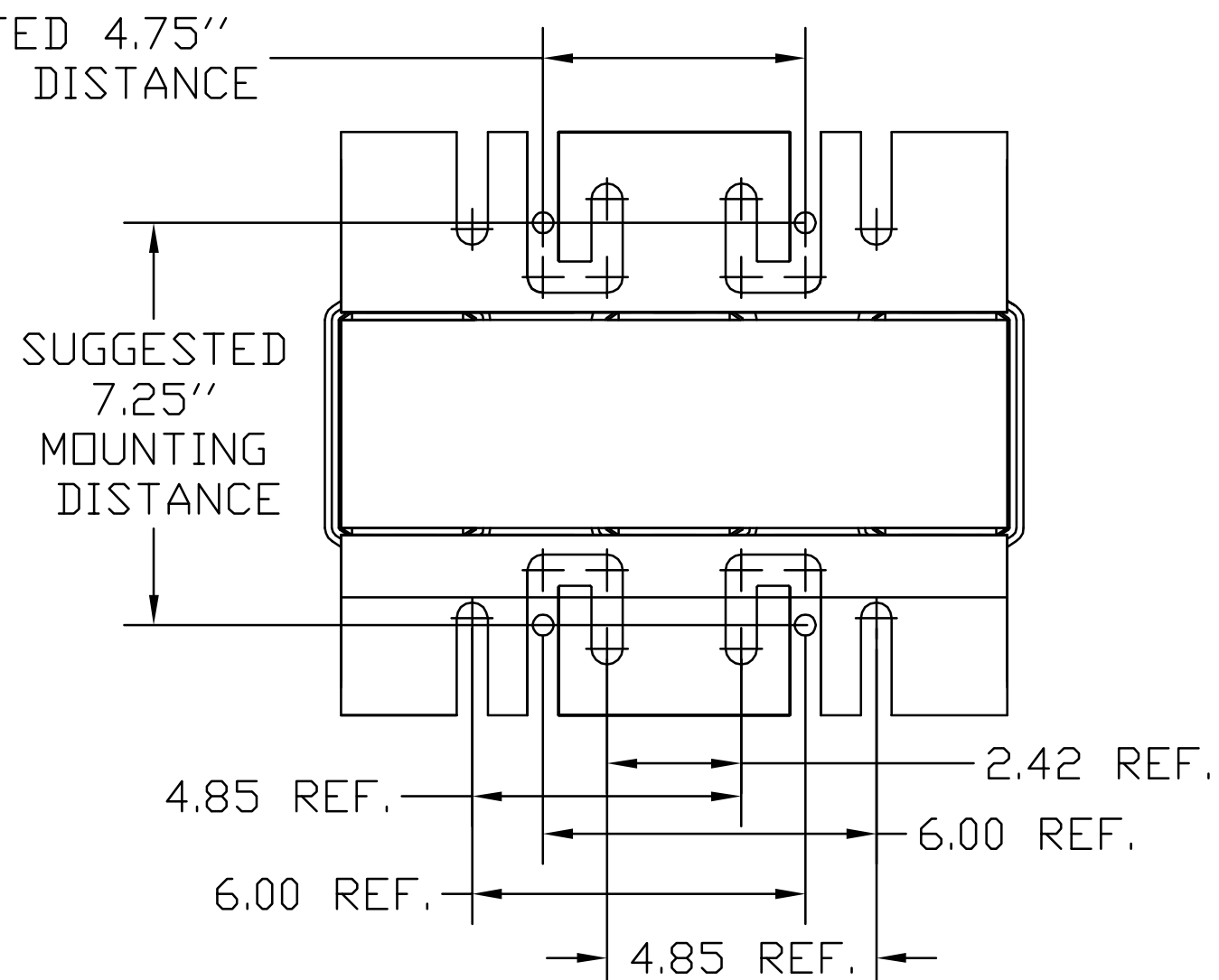
UL[®] US SA[®] CE



.44 DIA HOLE
6 PLACES.



SUGGESTED 4.75"
MOUNTING DISTANCE



TCI, LLC CLAIMS
PROPRIETARY RIGHTS IN
THE MATERIAL HEREIN
DISCLOSED. IT IS
SUPPLIED WITHOUT
PREJUDICE TO ANY
PATENT RIGHTS OF TCI
AND MAY NOT BE
REPRODUCED OR USED
TO MANUFACTURE
ANYTHING SHOWN
THEREIN WITHOUT
WRITTEN PERMISSION
FROM TCI.

NO	REVISION	DATE	BY	TOLERANCES (EXCEPT AS NOTED)
				DECIMAL
				.XX ±.03
				.XXX ±.01
				FRACTIONAL
				± 1/32
				ANGULAR
				± 1/2°

TCI W132 N10611 Grant Drive
Germanstown, WI 53022

KDRS2T, 250HP
480 VOLTS, 302 AMPS

DRN. BY DSW DATE 2/01/05 DVG. NO. 102432DG
SCALE TO FIT SIZE C SHT.1 OF 1