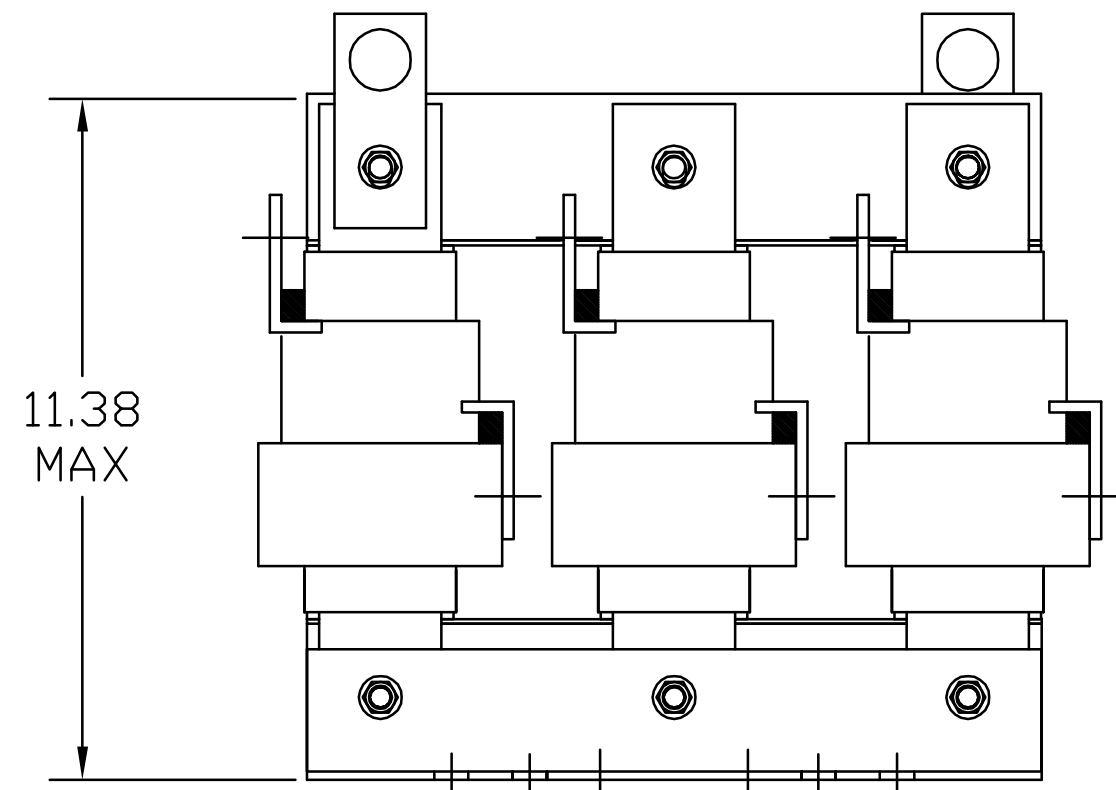
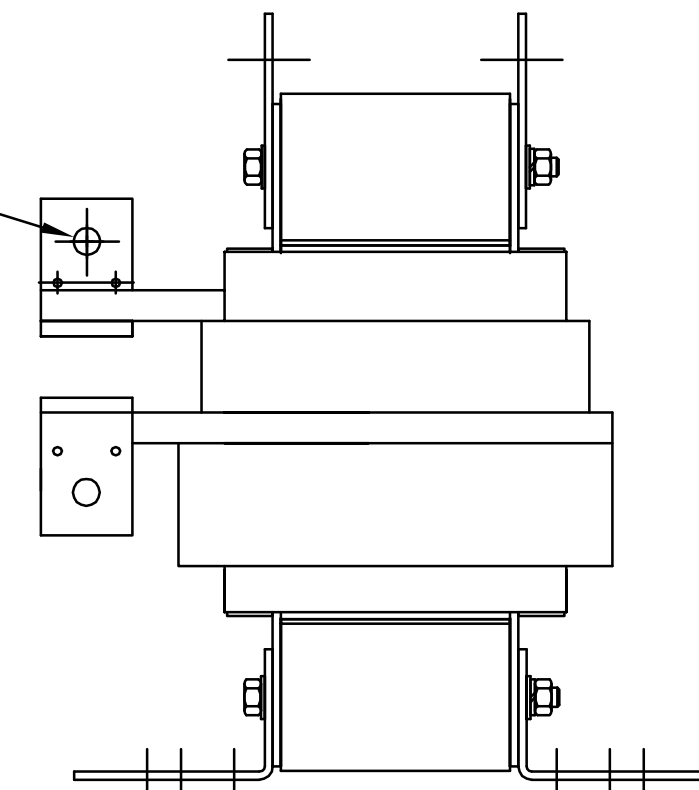


HP	CATALOG NO	--mH ±20%	--AMPS(A)	APPROX WT-LBS
200	KDRS1T	.306	240	165

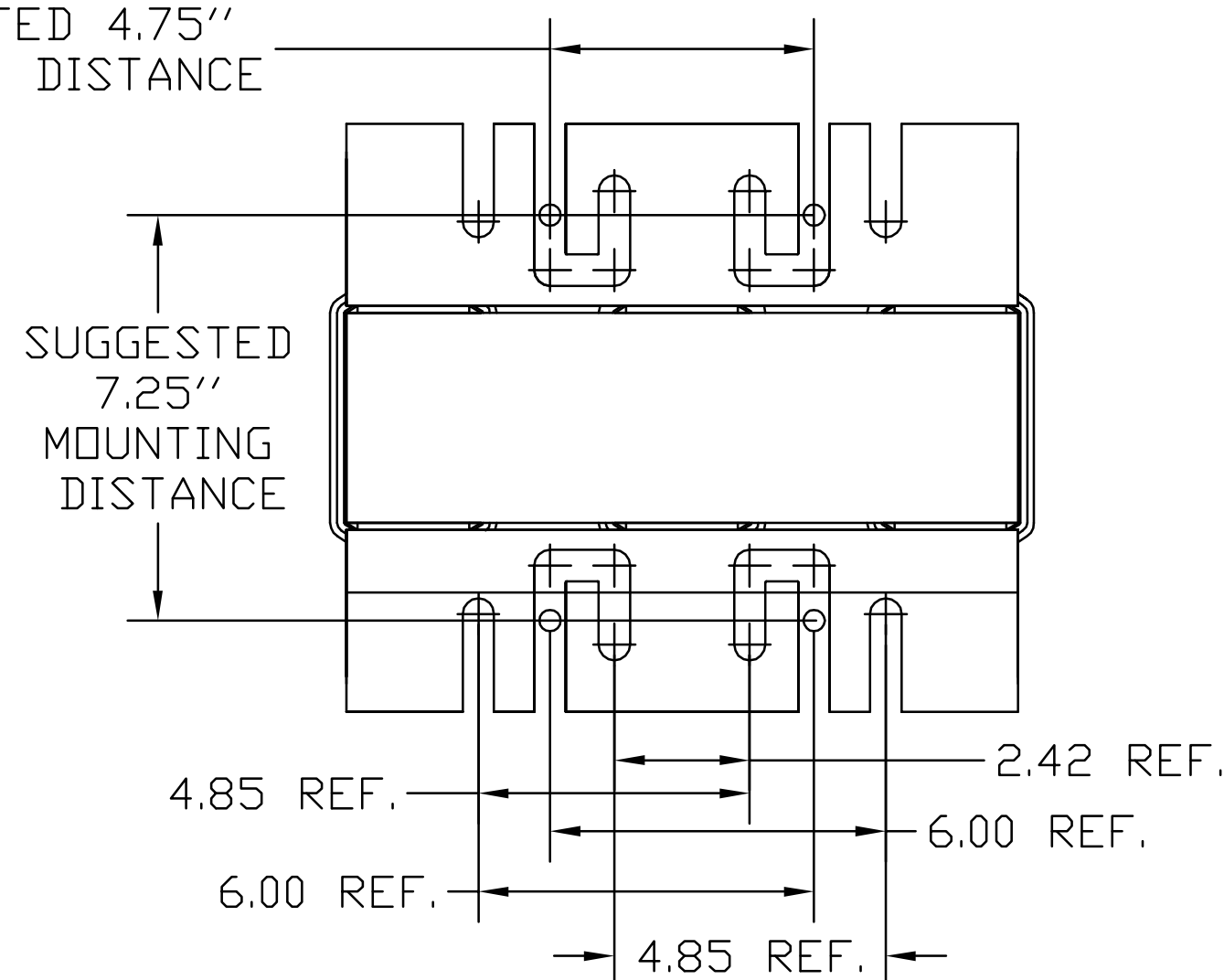
TCI PERFORMANCE AND PROTECTION FOR DRIVES.
 TRANS-COIL, INC MILWAUKEE WI
 WWW.transcoil.com
 800-824-8282
 KDR Drive Reactor
 CATALOG# MOTOR HP AMPS
 3PH, 60Hz, 600V Max, --- A Max.
 40C Amb Max, 155C Rise
 DATE CODE A1 A2 B1 B2 C1 C2



.44 DIA HOLE
6 PLACES.



SUGGESTED 4.75" MOUNTING DISTANCE



TCI, LLC CLAIMS PROPRIETARY RIGHTS IN THE MATERIAL HEREIN DISCLOSED. IT IS SUPPLIED WITHOUT PREJUDICE TO ANY PATENT RIGHTS OF TCI AND MAY NOT BE REPRODUCED OR USED TO MANUFACTURE ANYTHING SHOWN THEREIN WITHOUT WRITTEN PERMISSION FROM TCI.

NO	REVISION	DATE	BY	TOLERANCES (EXCEPT AS NOTED)
				DECIMAL
				.XX ±.03
				.XXX ±.01
				FRACTIONAL
				± 1/32
				ANGULAR
				± 1/2°

TCI W132 N10611 Grant Drive
 Germantown, WI 53022
 KDRS1T, 200HP
 480 VOLTS, 240 AMPS
 DRN. BY DSW DATE 1/25/05 DVG. NO. 102431DG
 SCALE TO FIT SIZE C SHT.1 OF 1