

CATALOG NO	--uH ±10%	--AMPS(A)	APPROX WT-LBS
KDRL33T	350	210	110

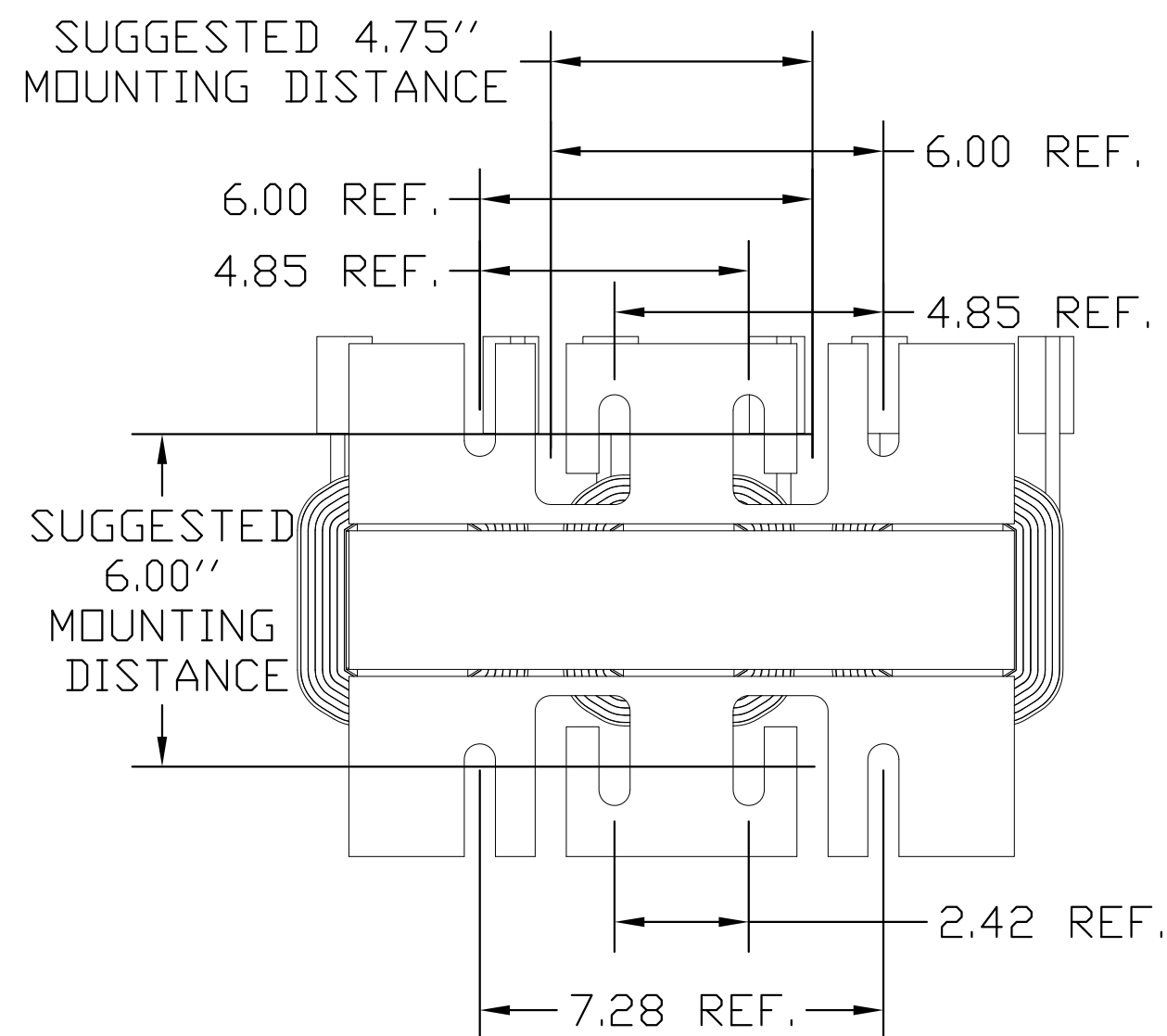
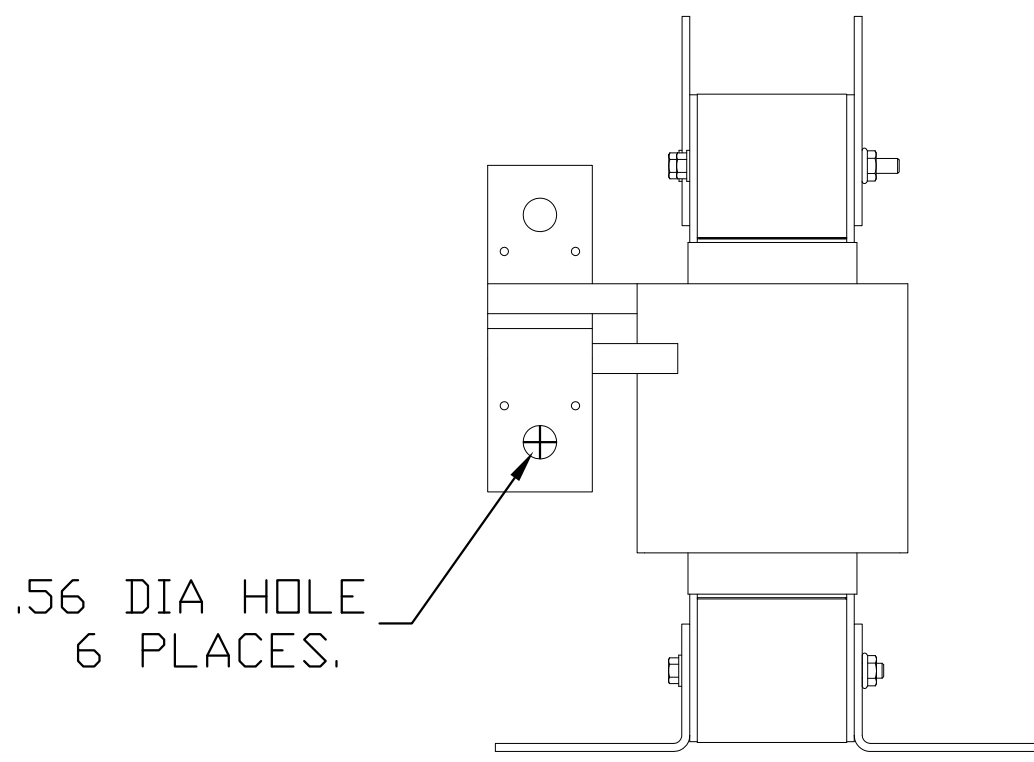
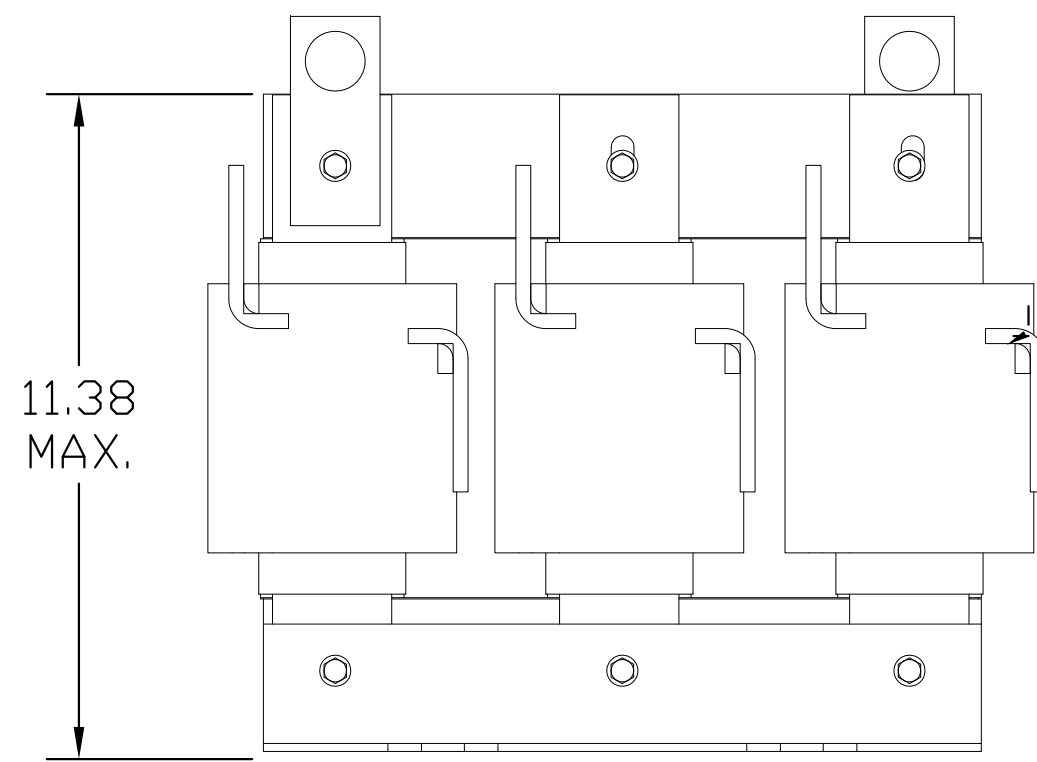
TCI Performance and Protection for Drives.

TRANS-COIL, INC
MILWAUKEE WI
WWW.transcoil.com
800-824-8282

KDR Drive Reactor
CATALOG# Motor Amps ---
3PH, 60Hz, 600V Max, --- A Max.
40C Amb Max, 155C Rise

RU[®] US SA[®] CE

DATE CODE A1 A2 B1 B2 C1 C2



TCI, LLC CLAIMS PROPRIETARY RIGHTS IN THE MATERIAL HEREIN DISCLOSED. IT IS SUPPLIED WITHOUT PREJUDICE TO ANY PATENT RIGHTS OF TCI AND MAY NOT BE REPRODUCED OR USED TO MANUFACTURE ANYTHING SHOWN THEREIN WITHOUT WRITTEN PERMISSION FROM TCI.				TOLERANCES (EXCEPT AS NOTED):	TCI [®] W132 N10611 Grant Drive Germantown, WI 53022 KDRL33T, LINE REACTOR 210A, 400V, 110kW.
				DECIMAL	
				.XX ±.03	
				.XXX ±.01	
				FRACTIONAL	DRN. BY DSW DATE 10/28/10 DVG. NO. 104484DG SCALE TO FIT SIZE C SHT.1 OF 1
				ANGULAR	
	A	AS RELEASED	10/28/10	DSW	
	NO	REVISION	DATE	BY	