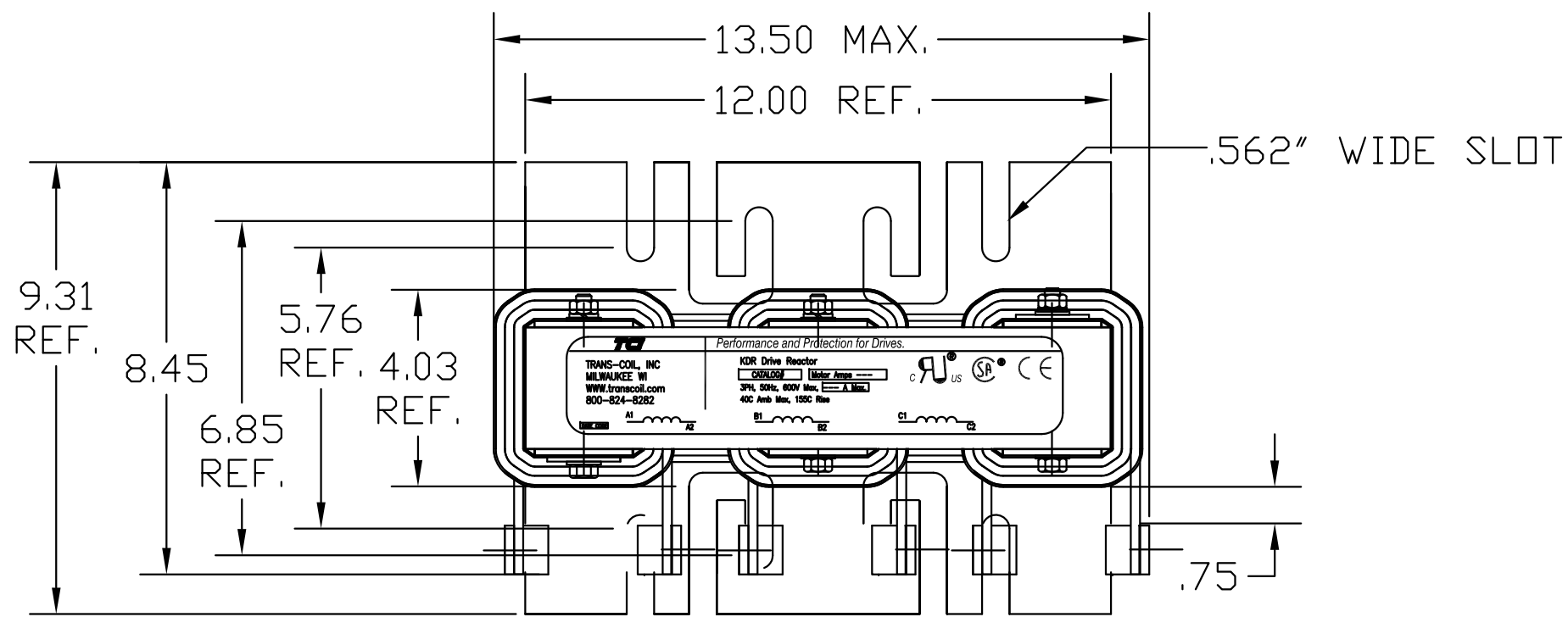


CATALOG NO	--uH ±10%	--AMPS(A)	APPROX WT-LBS
KDRL32T	432	170	100



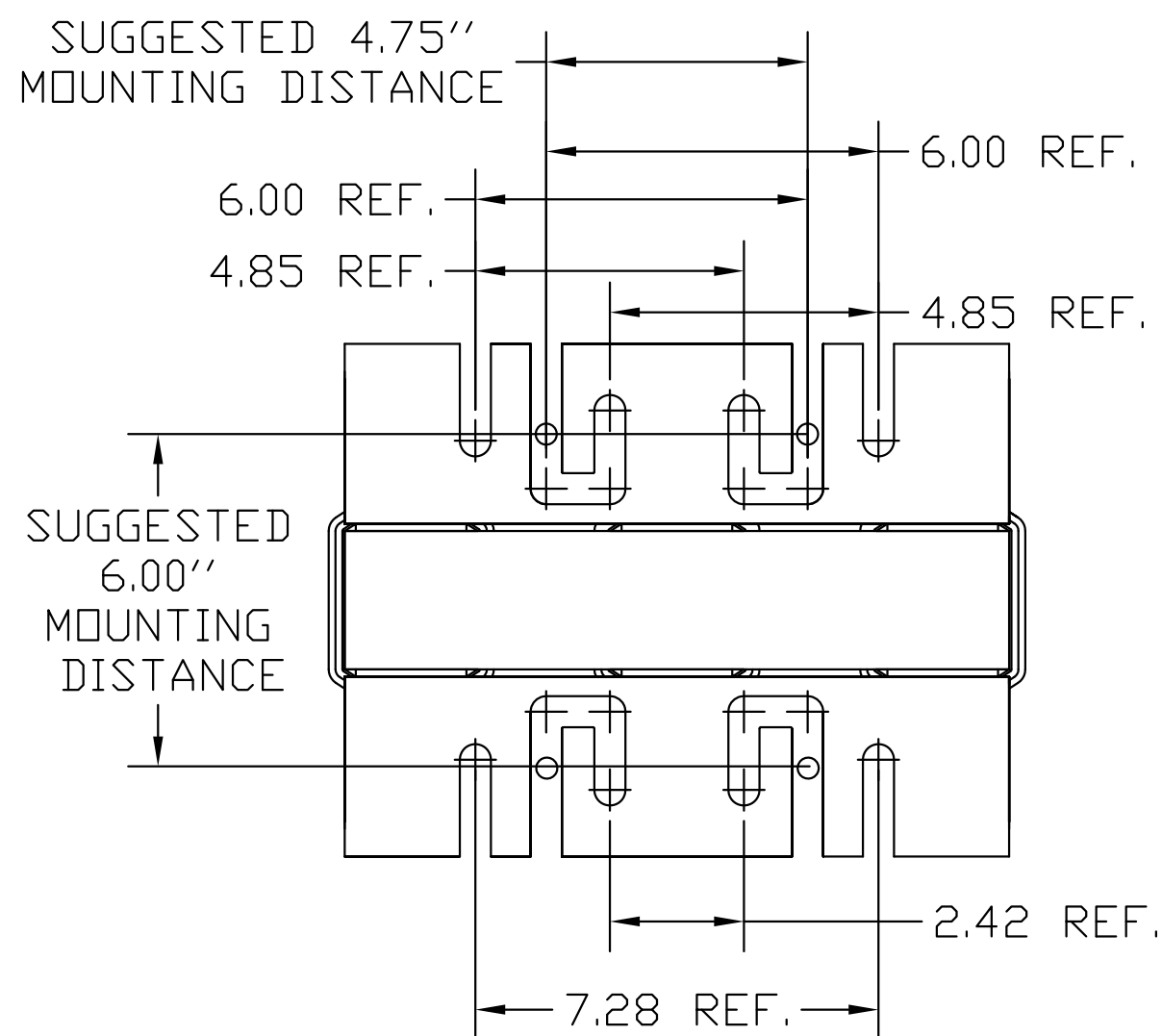
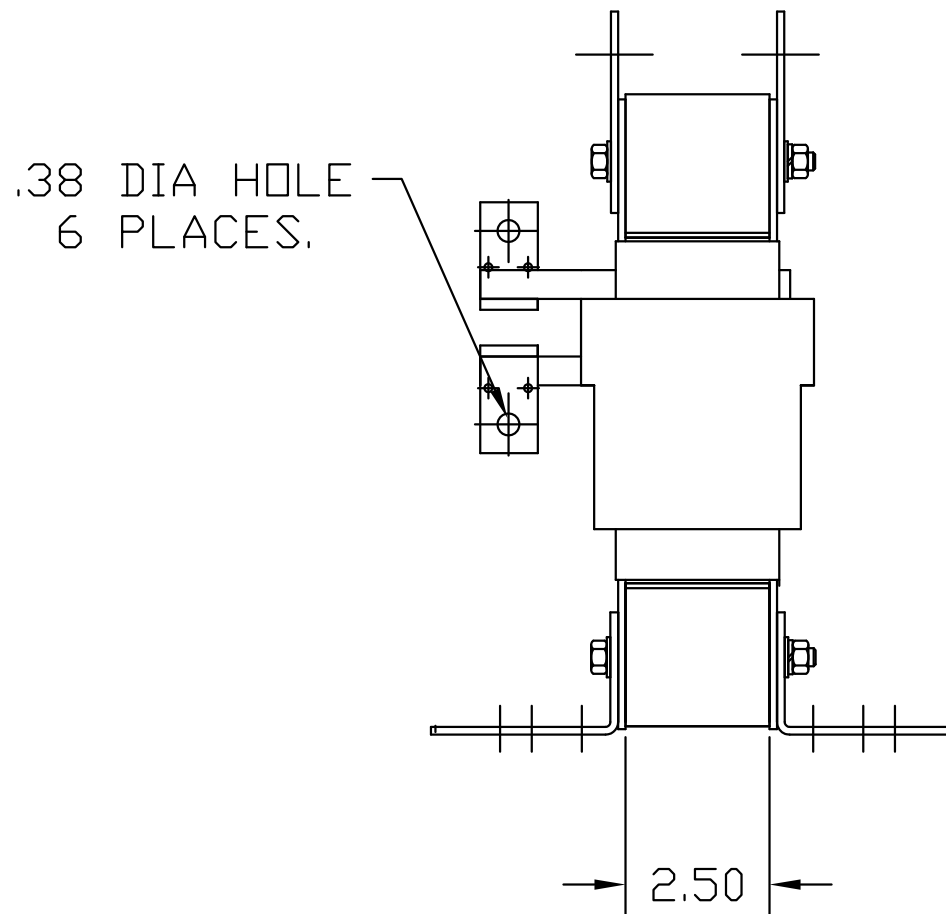
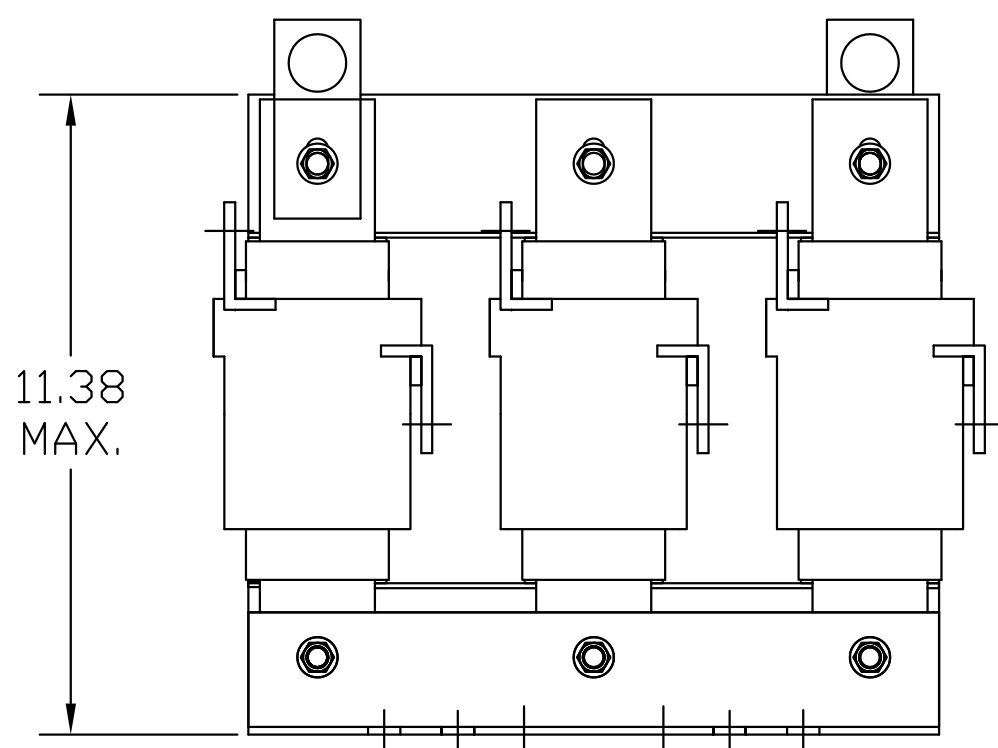
TCI Performance and Protection for Drives.

TRANS-COIL, INC
MILWAUKEE WI
WWW.transcoil.com
800-824-8282

KDR Drive Reactor
CATALOG# Motor Amps ---
3PH, 60Hz, 600V Max, --- A Max.
40C Amb Max, 155C Rise

UL[®] US SA[®] CE

DATE CODE A1 A2 B1 B2 C1 C2



TCI, LLC CLAIMS PROPRIETARY RIGHTS IN THE MATERIAL HEREIN DISCLOSED. IT IS SUPPLIED WITHOUT PREJUDICE TO ANY PATENT RIGHTS OF TCI AND MAY NOT BE REPRODUCED OR USED TO MANUFACTURE ANYTHING SHOWN THEREIN WITHOUT WRITTEN PERMISSION FROM TCI.				TOLERANCES (EXCEPT AS NOTED): DECIMAL	TCI [®] W132 N10611 Grant Drive Germentown, WI 53022
				.XX ±.03 .XXX ±.01	
				FRACTIONAL ± 1/32	KDRL32T, LINE REACTOR 170A, 400V, 90kW.
				ANGULAR ± 1/2°	
	AS RELEASED	10/27/10	DSW	DRN. BY DSW DATE 10/27/10 DWG. NO. 104483DG	
	REVISION	DATE	BY	SCALE TO FIT SIZE C SHT.1 OF 1	