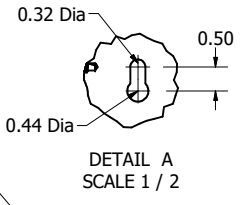


480 Rated Voltage, 600 Max Voltage, Low Z, Impedance.

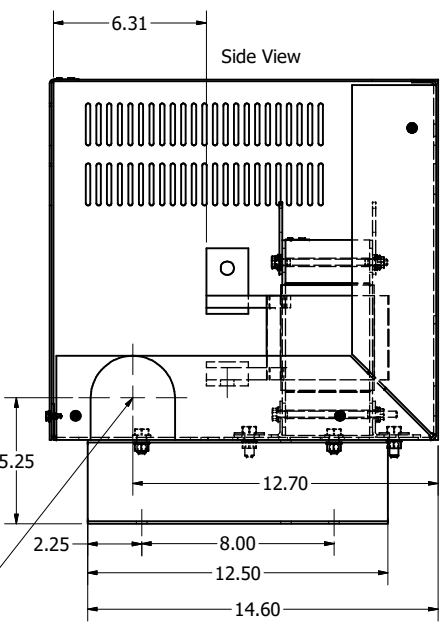
| Part Number | Horsepower (HP) | Motor Amps (A) | Maximum Amps (A) | Inductance (uH) | Weight (LBS) | Losses (W) | Terminal Hole Size (Inches) |
|-------------|-----------------|----------------|------------------|-----------------|--------------|------------|-----------------------------|
| KDRJ2LC5 | 350 | 414 | 450 | 44 | 120 | 465 | 0.53 |

(Customer Connections) Markings On Coils For Reference Only.




0.33 Dia Holes 2 Places

Location For Customer Conduit Fittings (Both Sides)



- Notes:
1. Material(s) Shall be RoHS Compliant
 2. Customer Is Responsible For Installation To Meet All National And Local Electrical Codes.

| | | | | | | | | | |
|--|-----------------------------|-----------|-----|---|-----|------|------------|---|------------|
| THE INFORMATION AND DESIGNS CONTAINED IN THIS DRAWING ARE CONFIDENTIAL AND THE PROPRIETARY PROPERTY OF ALLIED MOTION TECHNOLOGIES INC. AND ITS SUBSIDIARIES. NEITHER THIS DESIGN NOR ANY INFORMATION CONTAINED IN THIS DRAWING MAY BE REPRODUCED OR DISCLOSED TO OTHERS WITHOUT THE EXPRESS WRITTEN CONSENT OF ALLIED MOTION TECHNOLOGIES INC. AND ITS SUBSIDIARIES. | | | | TOLERANCES (EXCEPT AS NOTED) DECIMAL .XX ± .25 .XXX ± .10 FRACTIONAL ± 1/32 ANGULAR ± 1° | | | |  W132N10611 (Rev 1) Rev 6 Germantown, WI 53022 © 2024 TCI, LLC An Allied Motion Company KDR J Frame Enclosed CS | |
| REV | 6688, J2L, 500A to 450A Max | 6/13/2024 | DSW | DATE | BY | DATE | 08/08/2007 | REV | KDRJ2LC5DG |
| NO | REVISION | DATE | BY | SCALE | 1/2 | REV | CS | FIG | SHT 1 OF 1 |