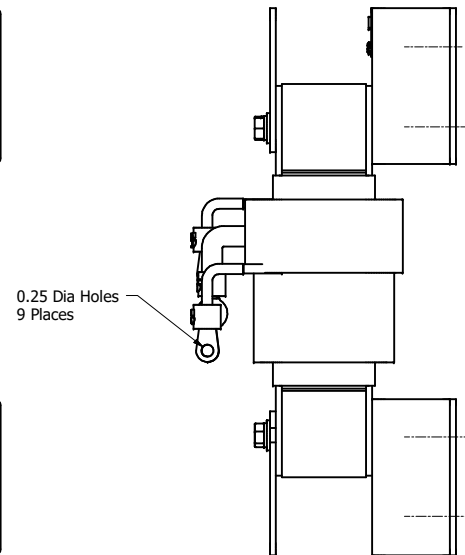
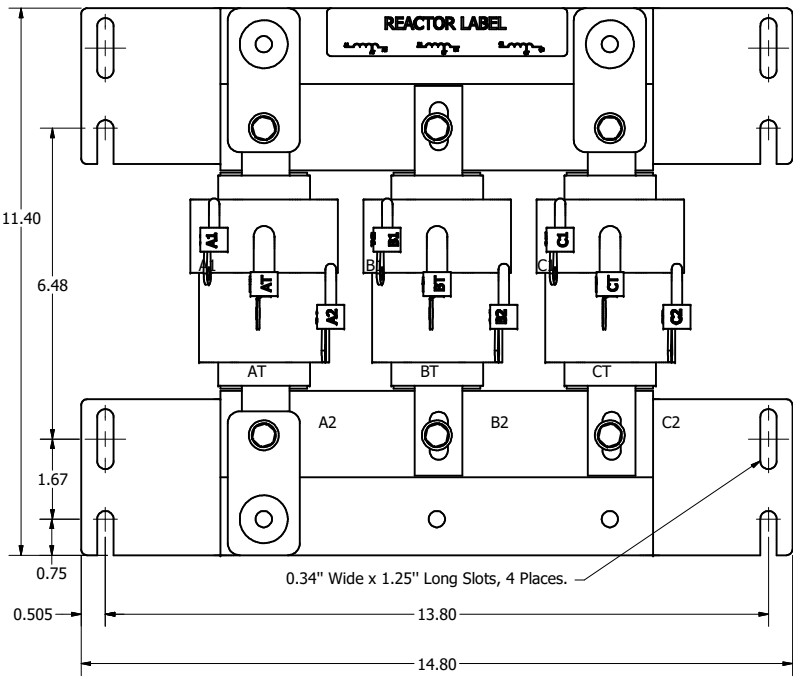
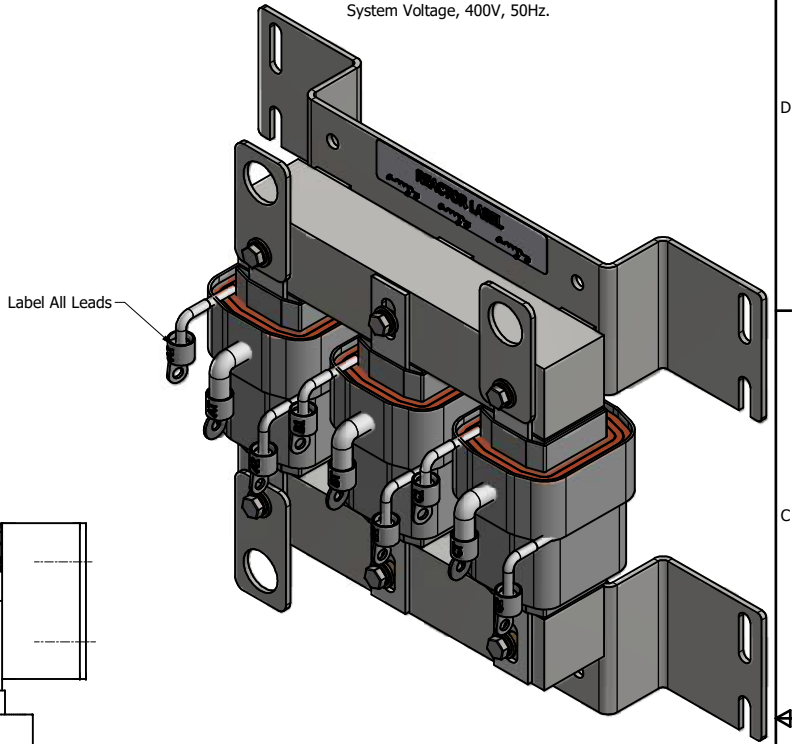
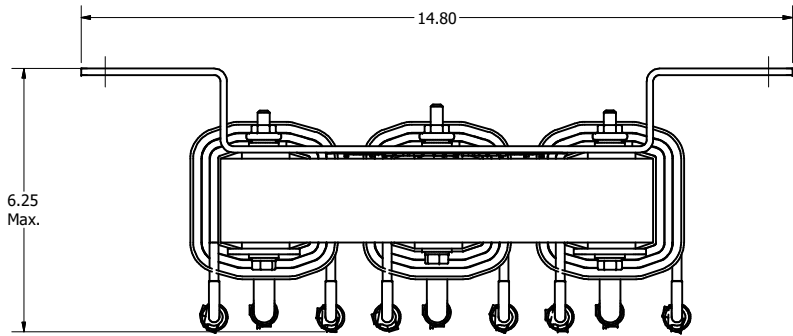


TCI Part Number	Horsepower (HP)	Rated Amps (A)	Max Amps (A)	Approx Weight (LBS)
KDR12TXX1	30	34.2	45	45

System Voltage, 400V, 50Hz.



Customer Is Responsible For Installation to Meet All National And Local Electrical Codes. Material(s) Shall be RoHS Compliant

TCI, LLC CLAIMS PROPRIETARY RIGHTS IN THE MATERIAL HEREIN DISCLOSED. IT IS SUPPLIED WITHOUT PREJUDICE TO ANY PATENT RIGHTS OF TCI AND MAY NOT BE REPRODUCED OR USED TO MANUFACTURE ANYTHING SHOWN THEREIN WITHOUT WRITTEN PERMISSION FROM TCI.					TOLERANCES (EXCEPT AS NOTED) DECIMAL .XX ± .25 .XXX ± .10 FRACTIONAL ± 1/16 ANGULAR ± 1°	TCI W132 N10611 Grant Drive Germantown, WI 53022 KDR, 400V/50Hz, 45 Max Amps, 22kW/30HP, 3 Phase Inductor, Wall Mounted, 13.8" Spacing DSN BY: DSW DATE: 2/21/2020 SCALE: 1/2 DRAWN: TSW 108426DG SHEET 1 OF 1
	A	AS DESIGNED	2/21/2020	DSW		
	NO	REVISION	DATE	BY		