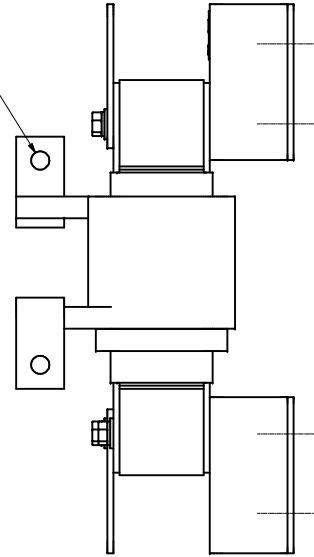
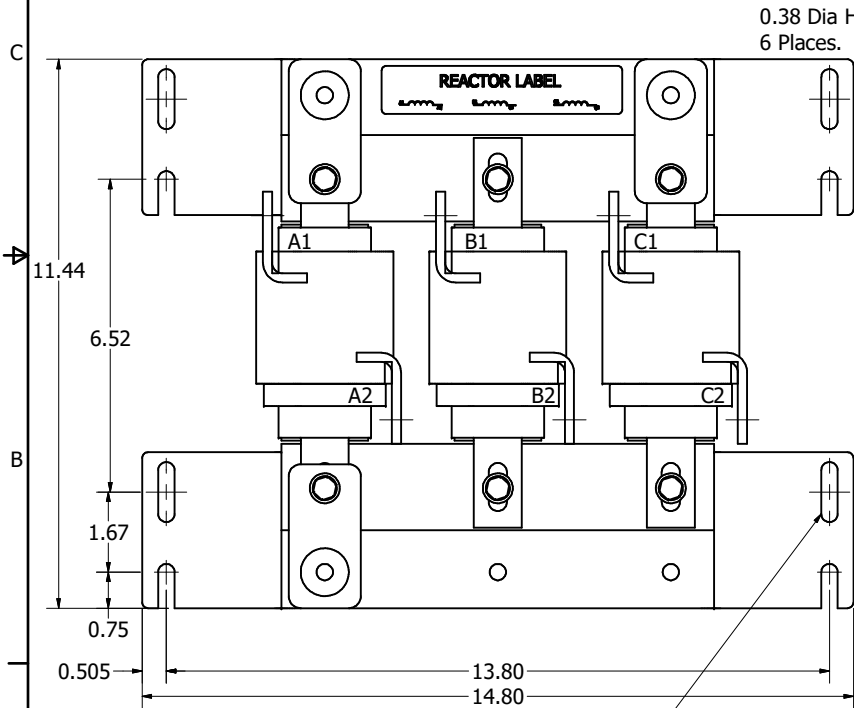
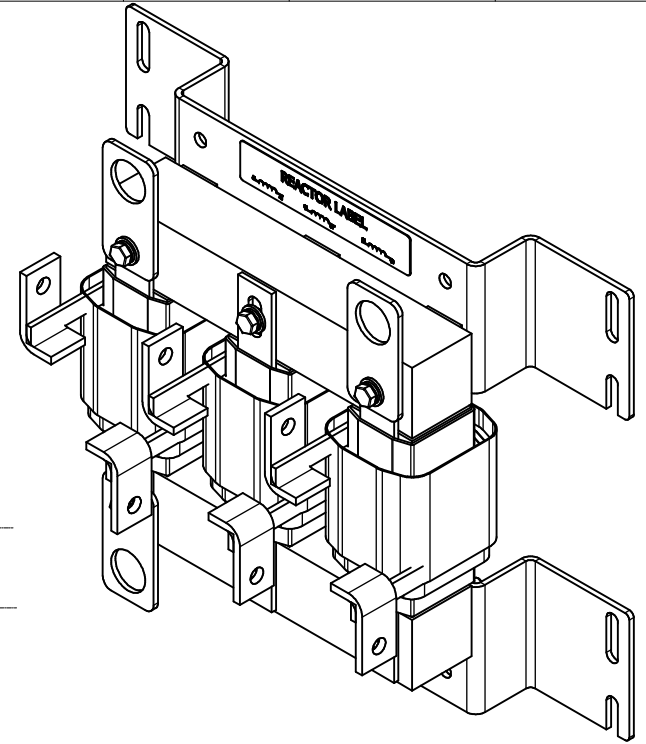
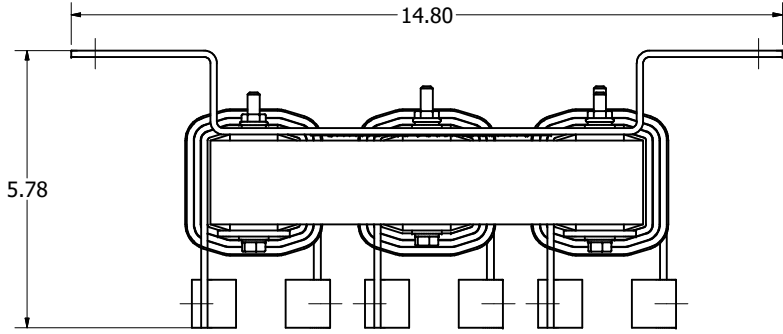



TCI Part Number	Horsepower (HP)	Motor Amps (A)	Maximum Amps (A)	Approx Weight (LBS)
KDRI2HX1	100	124	125	52



0.34" Wide x 1.25" Long  
Slots, 4 Places.

Customer Is Responsible For Installation to  
Meet All National And Local Electrical Codes.

Material(s) Shall be RoHS Compliant

THE INFORMATION AND DESIGNS CONTAINED IN THIS DRAWING ARE CONFIDENTIAL AND THE PROPRIETARY PROPERTY OF ALLIED MOTION TECHNOLOGIES INC. AND ITS SUBSIDIARIES. NEITHER THIS DESIGN NOR ANY INFORMATION CONTAINED IN THIS DRAWING MAY BE REPRODUCED OR DISCLOSED TO OTHERS WITHOUT THE EXPRESS WRITTEN CONSENT OF ALLIED MOTION TECHNOLOGIES INC. AND ITS SUBSIDIARIES.				TOLERANCES (EXCEPT AS NOTED)		 <small>W132N10611 (Rev. 12/15) Germantown, WI 53022</small>	
D	6346, Termination change to flag	7/28/2023	DSW	.XX ± .25	© 2023 TCI, LLC		
C	4751, Add Third Lift Ring	5/20/19	DSW	.XXX ± .10	An Official Motors Company		
B	GAP 130 TO 170	2/19/19	DSW	FRACTIONAL	KDR, Wall Mounted, 480V, 100HP, 125A		
A	AS DESIGNED	9/17/18	DSW	ANGULAR	3 Phase, Input Line Inductor, High Impedance		
NO	REVISION	DATE	BY	± 1°	DRN BY: DSW	DATE: 9/17/18	107868DG
				SCALE: 1/2	DRN: DSW	DATE: 9/17/18	107868DG