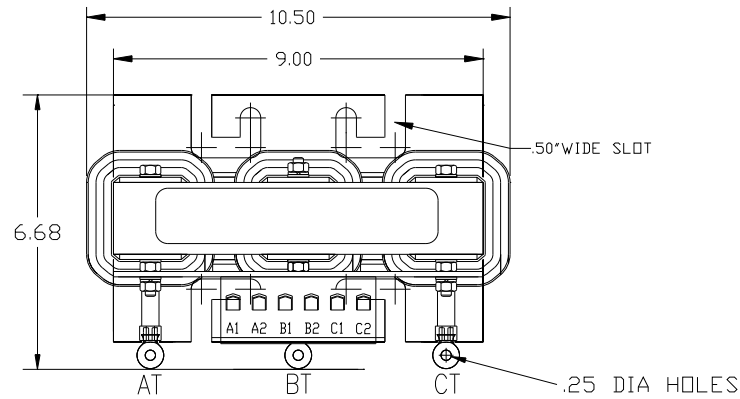
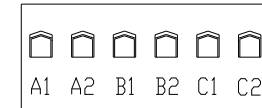
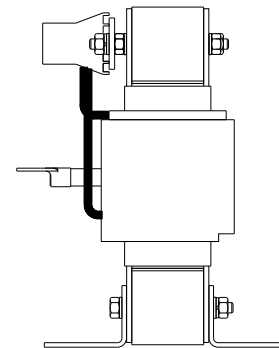
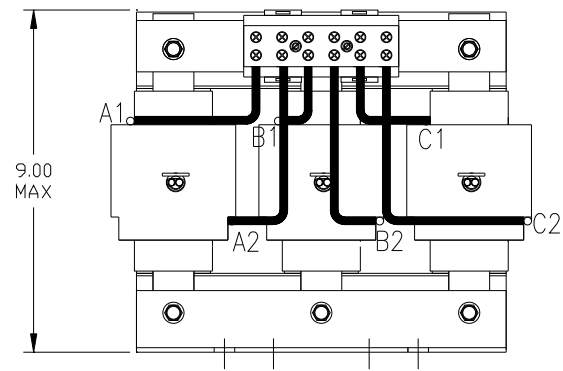


HP	CATALOG NO	__AMPS(A)	APPROX WT-LBS
40	KDR11TT	52	50



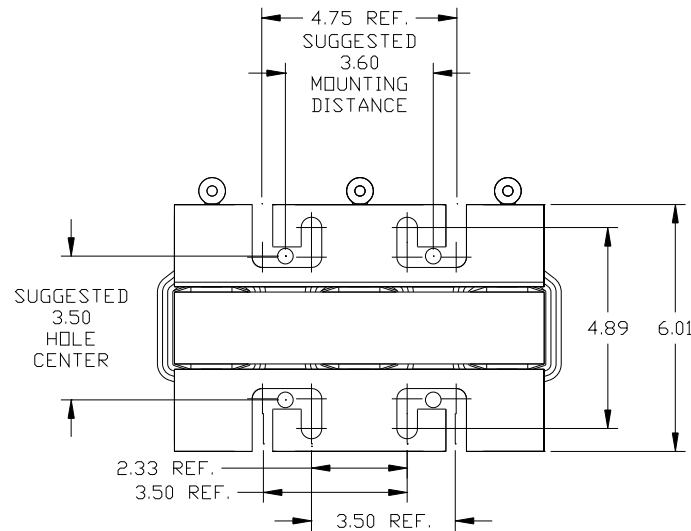
TCI TRANS-COIL, INC MILWAUKEE, WI WWW.transcoil.com 800-824-8282	Performance and Protection for Drives. KDR Drive Reactor REACTOR Motor Amps $\frac{---}{---}$ Max.		
	3% 60Hz, 600V Max. $\frac{---}{---}$ A. Rated 40C Amb. Max, 150C Rise		

NOTE: A1, AT A2, B1, BT, B2, C1, CT C2,
 TERMINAL BLOCK AND COIL
 FOR REFERENCE ONLY.



TERMINAL BLOCK
 TORQUE(LB-IN)=CUSTOMER WIRE

35 = 1 AWG THRU 4 AWG
 30 = 6 AWG THRU 14 AWG
 25 = 16 AWG THRU 20 AWG
 20 = 22 AWG



				TOLERANCES (EXCEPT AS NOTED): DECIMAL .XX ± .03 .XXX ± .01 FRACTIONAL ± 1/32 ANGULAR ± 1/2°		7878 N. 86th STREET MILWAUKEE, WI 53224	
				KDR11TT 40HP, HGP FILTER REACTOR			
NO		REVISION	DATE	BY	DRN BY DSW	DATE 6/7/2013	DWG NO 105291DG
				SCALE TO FIT	APPRV	SHT. 1 of 1	