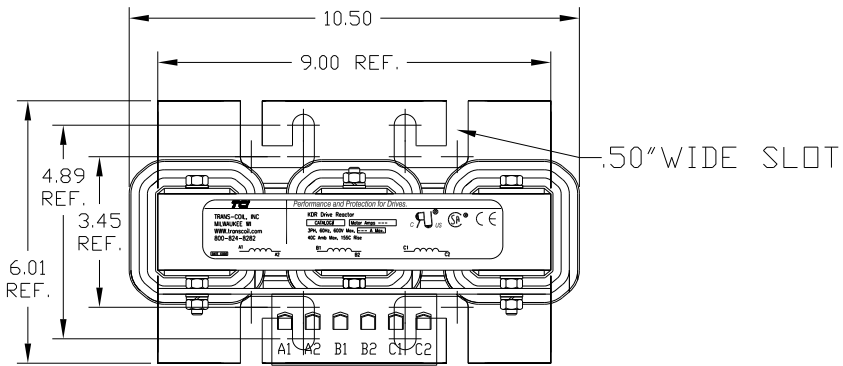


HP	CATALOG NO	--mH ±20%	--AMPS(A)	APPROX WT-LBS
40	KDRI1T	1.41	52	50



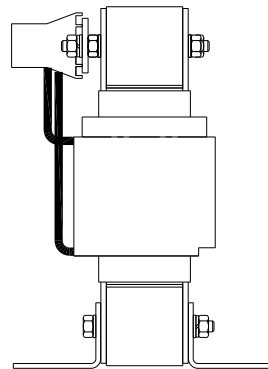
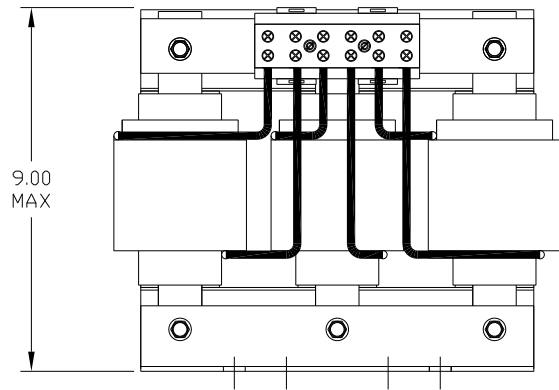
**TCI**  
 TRANS-COIL, INC  
 MILWAUKEE WI  
 WWW.transcoil.com  
 800-824-8282

*Performance and Protection for Drives.*

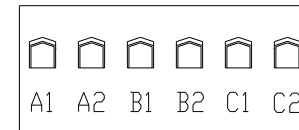
KDR Drive Reactor  
 CATALOG# [ ] Motor Amps [ ]  
 3PH, 60Hz, 600V Max, [ ] A Max.  
 40C Amb Max, 155C Rise

UL<sup>®</sup> US SP<sup>®</sup> CE

A1 A2 B1 B2 C1 C2

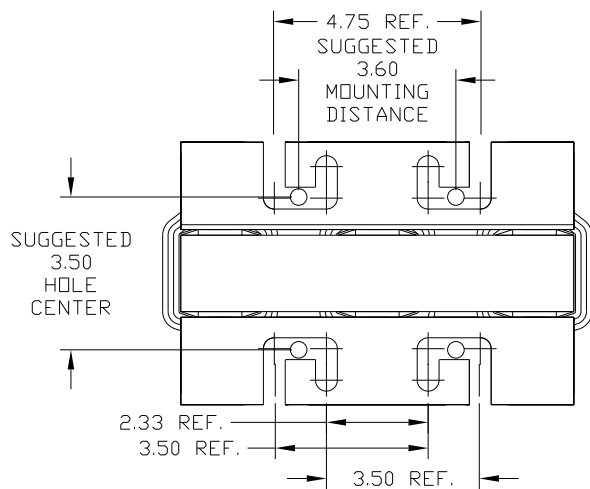


NOTE: A1, A2, B1, B2, C1, C2,  
 TERMINAL BLOCK  
 FOR REFERENCE ONLY.



TERMINAL BLOCK  
 TORQUE(LB-IN)=CUSTOMER WIRE

35 = 1 AWG THRU 4 AWG  
 30 = 6 AWG THRU 14 AWG  
 25 = 16 AWG THRU 20 AWG  
 20 = 22 AWG



				TOLERANCES (EXCEPT AS NOTED): DECIMAL		7878 N. 86th STREET MILWAUKEE, WI 53224	
				.XX ± .03 .XXX ± .01			
				FRACTIONAL ± 1/32		KDRI1T, 40HP 480 Volts, 52 Amps	
				ANGULAR ± 1/2°			
NO	REVISION	DATE	BY	SCALE TO FIT	DRN BY DSW	DATE 02/01/05	DWG NO. 102424DG SHT. 1 OF 1