

CATALOG NO	RATED AMPS	--mH±10%	MAX AMPS	APPROX WT-LBS
KDRH33T	38	1.93	38	40

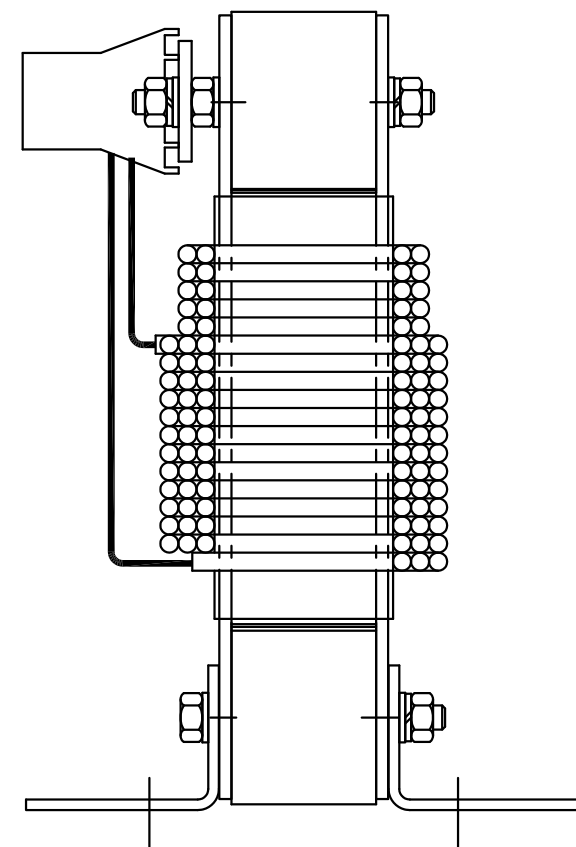
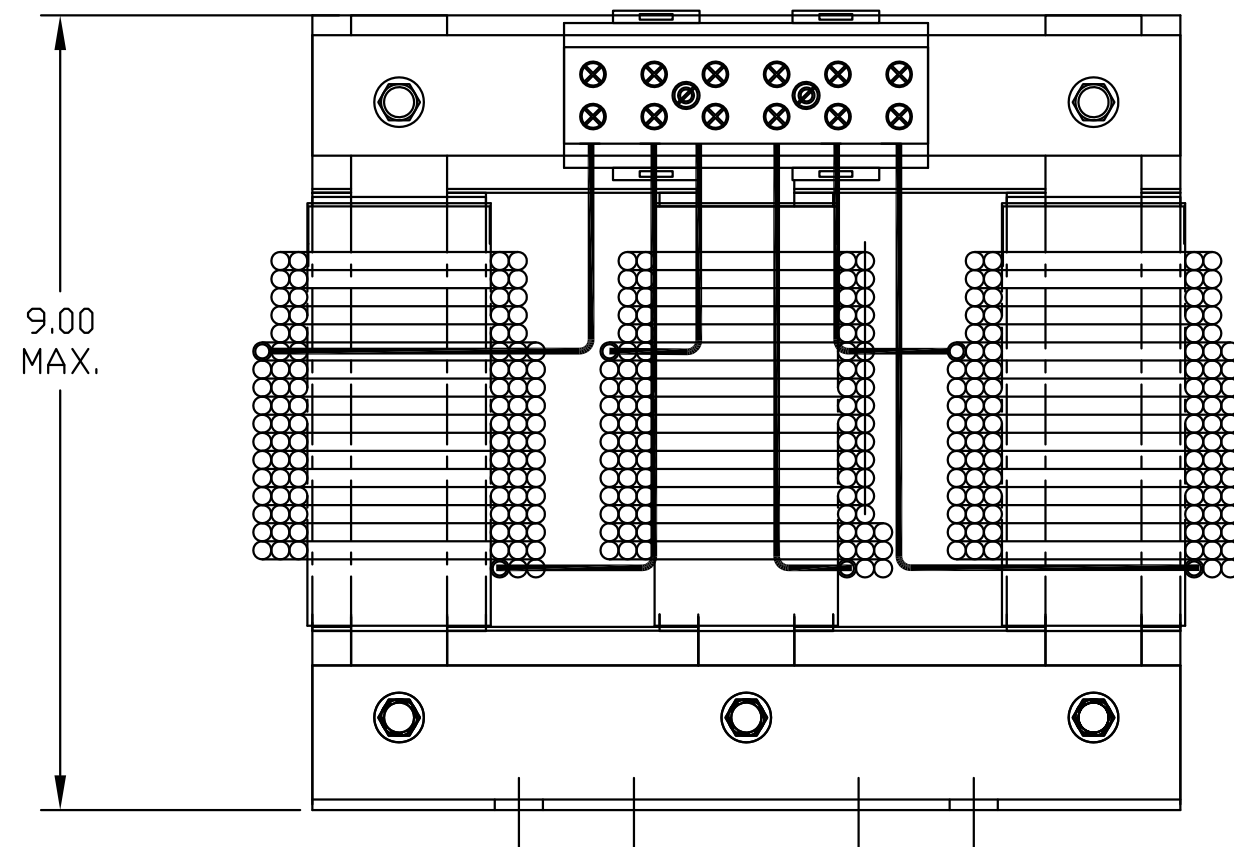
**TCI**  
 TRANS-COIL, INC  
 MILWAUKEE WI  
 WWW.transcoil.com  
 800-824-8282

*Performance and Protection for Drives.*

KDR Drive Reactor  
 CATALOG# Motor Amps ---  
 3PH, 50Hz, 600V Max, --- A Max.  
 40C Amb Max, 115C Rise

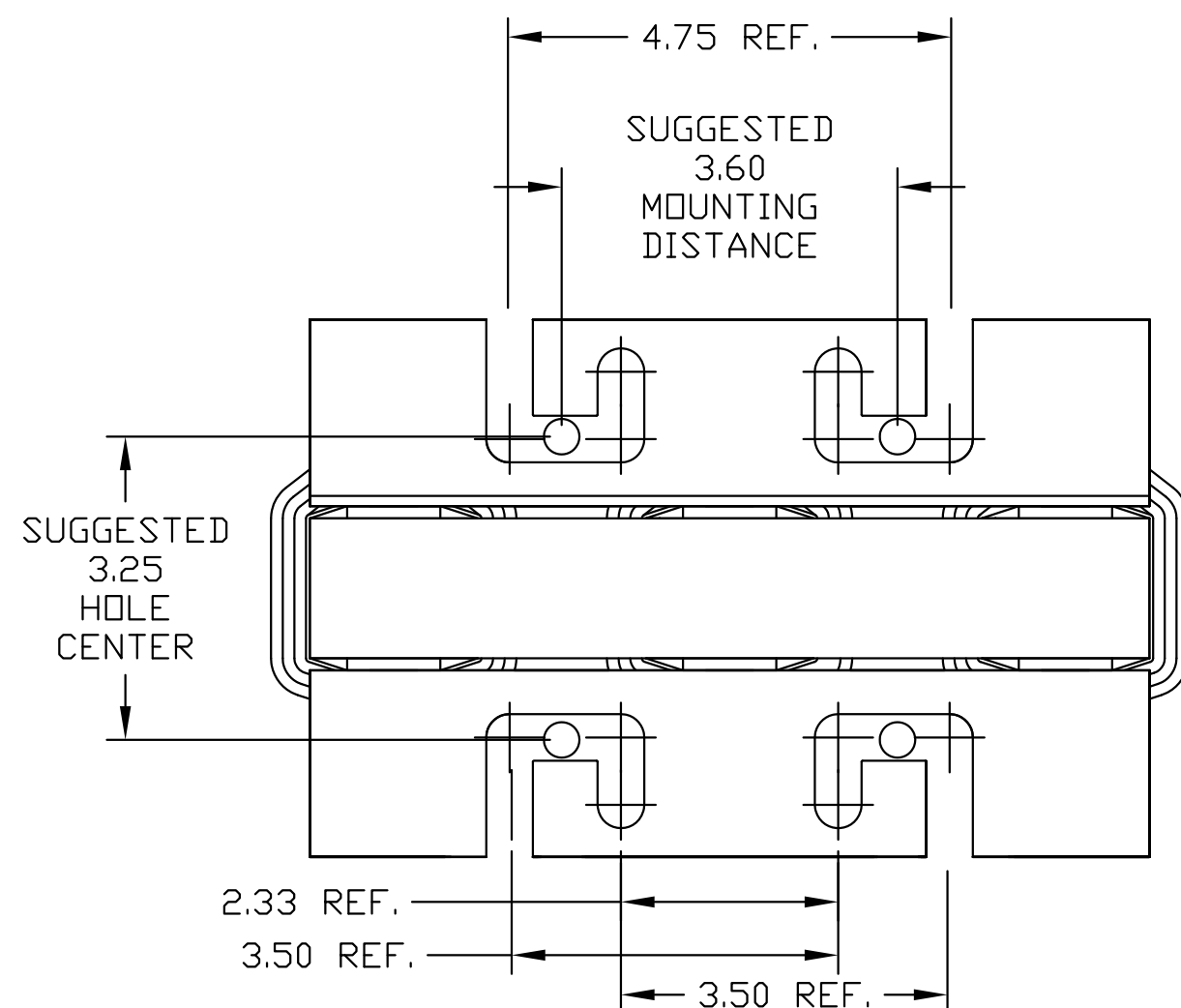
UL<sup>®</sup> US SA<sup>®</sup> CE

A1 A2 B1 B2 C1 C2



TERMINAL BLOCK  
 TORQUE(LB-IN)=CUSTOMER WIRE

35 = 1 AWG THRU 4 AWG  
 30 = 6 AWG THRU 14 AWG  
 25 = 16 AWG THRU 20 AWG  
 20 = 22 AWG



NOTE: A1, A2, B1, B2, C1, C2,  
 MARKINGS TERMINAL BLOCK  
 FOR REFERENCE ONLY.

TCI, LLC CLAIMS PROPRIETARY RIGHTS IN THE MATERIAL HEREIN DISCLOSED. IT IS SUPPLIED WITHOUT PREJUDICE TO ANY PATENT RIGHTS OF TCI AND MAY NOT BE REPRODUCED OR USED TO MANUFACTURE ANYTHING SHOWN THEREIN WITHOUT WRITTEN PERMISSION FROM TCI.	TOLERANCES (EXCEPT AS NOTED):	W132 N10611 Grant Drive Germantown, WI 53022					
	DECIMAL		.XX ±.03				
	FRACTIONAL		.XXX ±.01				
	ANGULAR		± 1/32				
NO	REVISION	DATE	BY	SCALE TO FIT	SIZE C	DATE 11/2/10	DWG. NO. 104547DG
							SHT.1 OF 1