

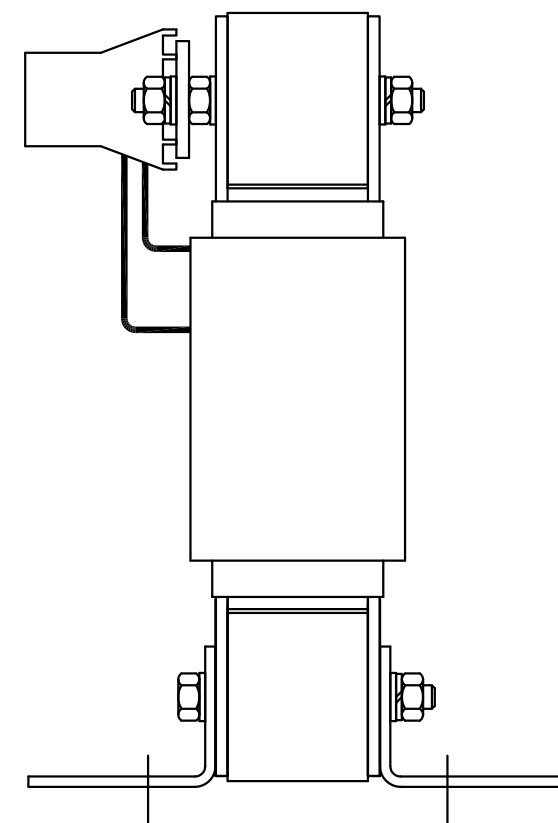
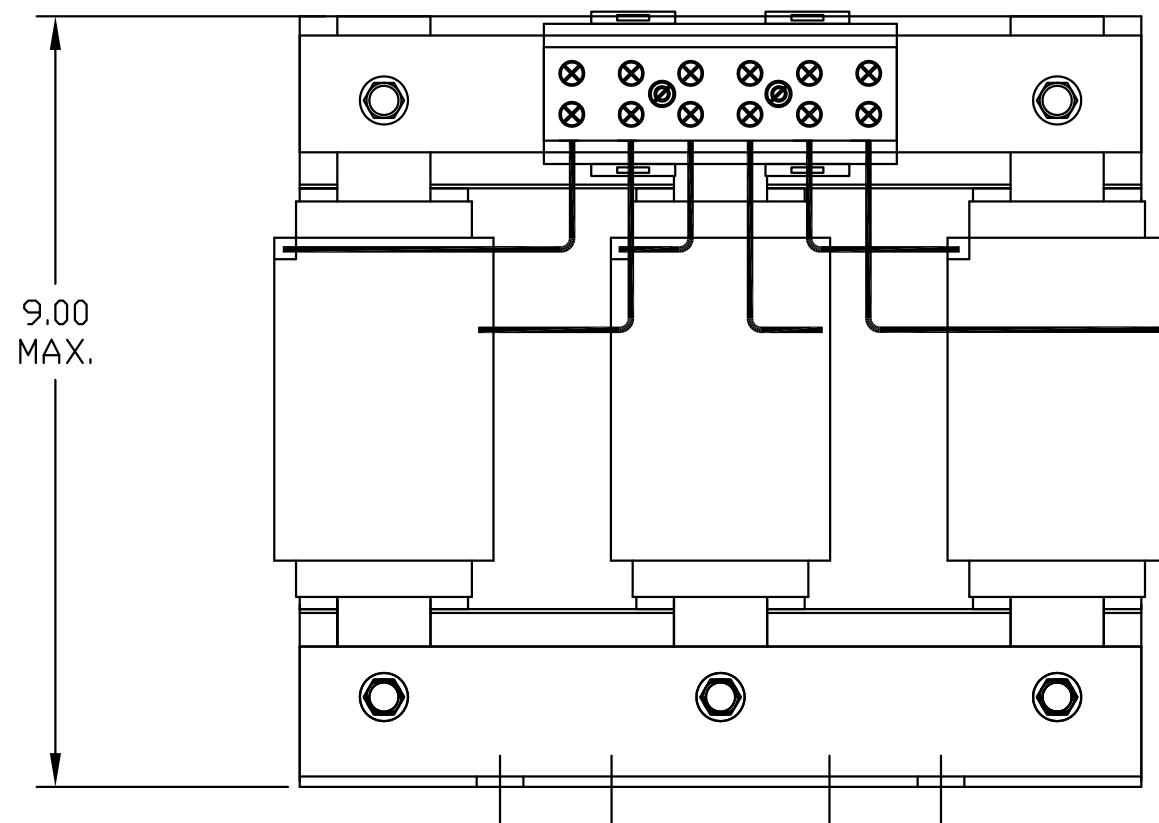
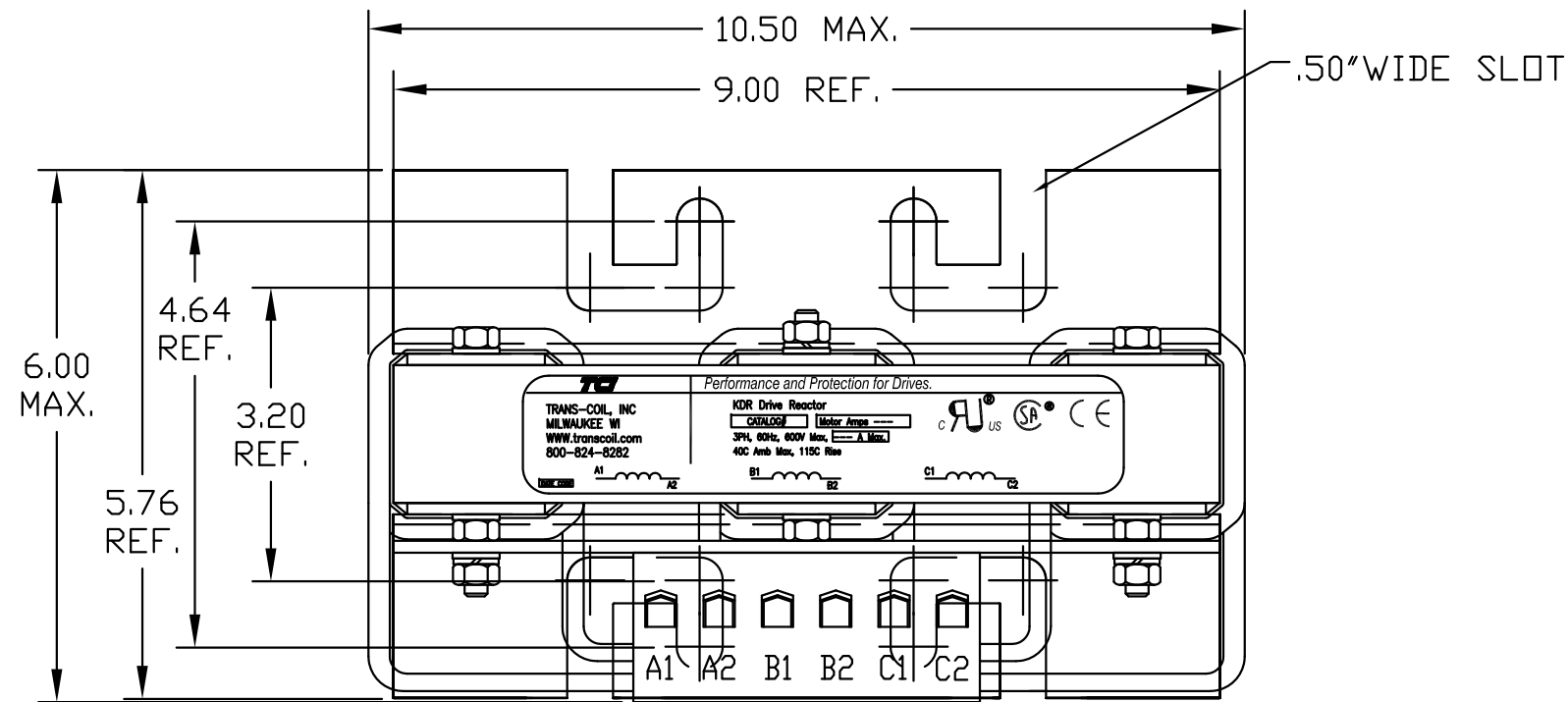
CATALOG NO	--mH ±10%	--AMPS(A)	APPROX WT-LBS
KDRH32T	2.30	32	41

TCI Performance and Protection for Drives.

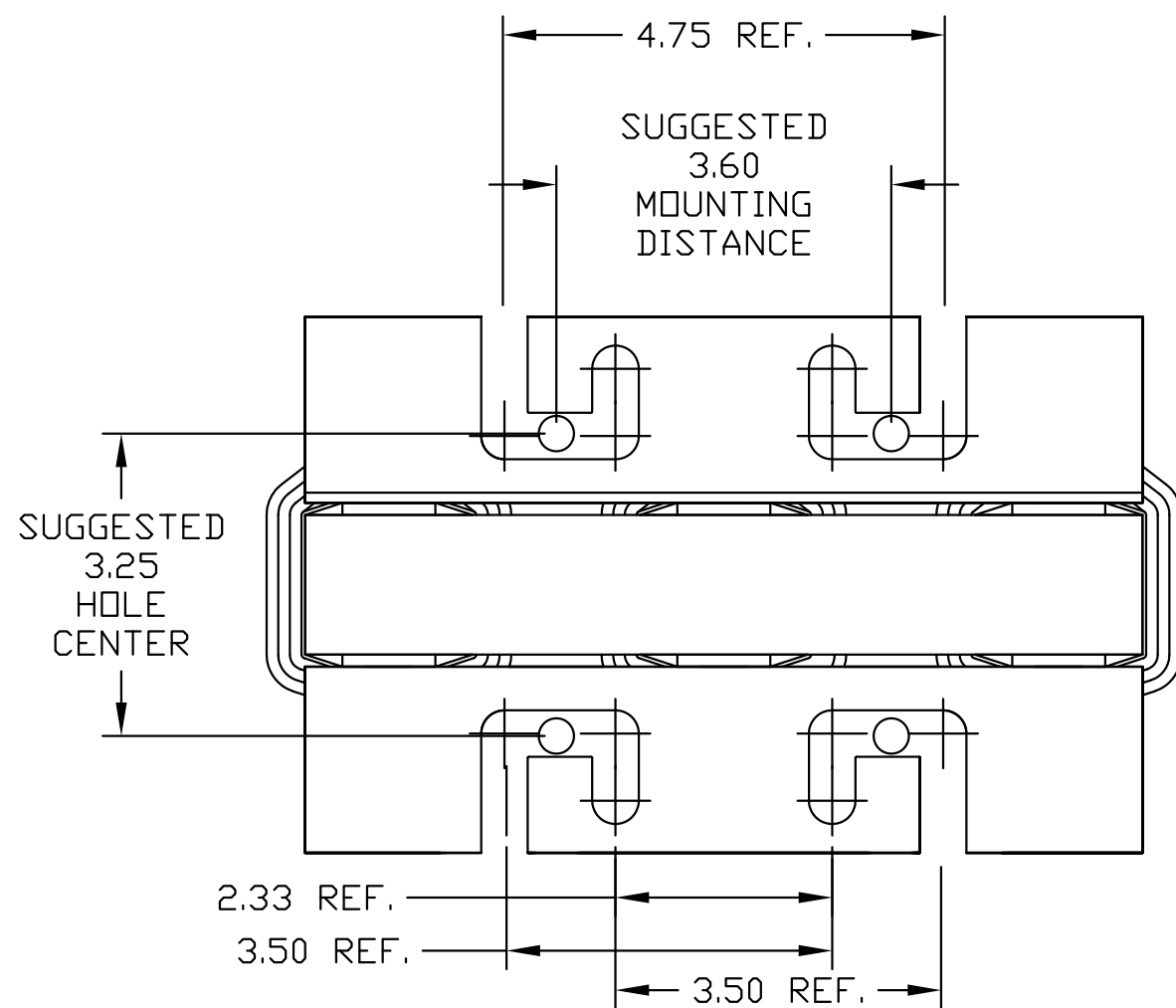
TRANS-COIL, INC
MILWAUKEE WI
WWW.transcoil.com
800-824-8282

KDR Drive Reactor
CATALOG Motor Amps
3PH, 60Hz, 600V Max, [] A Max.
40C Amb Max, 115C Rise

UL[®] US SA[®] CE



TERMINAL BLOCK TORQUE(LB-IN)=CUSTOMER WIRE
35 = 1 AWG THRU 4 AWG
30 = 6 AWG THRU 14 AWG
25 = 16 AWG THRU 20 AWG
20 = 22 AWG



NOTE: A1, A2, B1, B2, C1, C2,
TERMINAL BLOCK
FOR REFERENCE ONLY.

TCI, LLC CLAIMS PROPRIETARY RIGHTS IN THE MATERIAL HEREIN DISCLOSED. IT IS SUPPLIED WITHOUT PREJUDICE TO ANY PATENT RIGHTS OF TCI AND MAY NOT BE REPRODUCED OR USED TO MANUFACTURE ANYTHING SHOWN THEREIN WITHOUT WRITTEN PERMISSION FROM TCI.				TOLERANCES (EXCEPT AS NOTED): DECIMAL	TCI [®] W132 N10611 Grant Drive Germanstown, WI 53022
				.XX ±.03	
				.XXX ±.01	
				FRACTIONAL ± 1/32	
	AS BUILT	10/21/10	DSW	ANGULAR ± 1/2°	KDRH32T LINE REACTOR 15kW, 32A, 400V, 50/60 HZ.
NO	REVISION	DATE	BY	SCALE TO FIT	
					DRN. BY DSW DATE 10/26/10 DWG. NO. 104477DG
					SIZE C SHT.1 OF 1