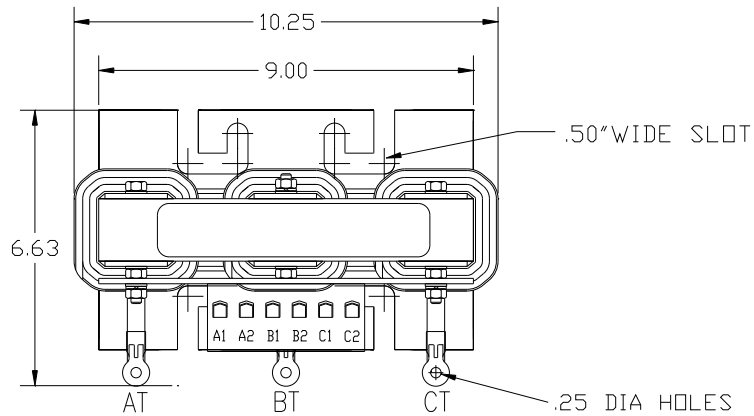


HP	CATALOG NO	__AMPS(A)	APPROX WT-LBS
30	KDRHITT	40	40



**TCI** Performance and Protection for Drives.

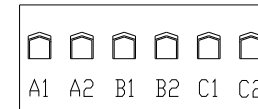
TRANS-COIL, INC  
MILWAUKEE, WI  
WWW.transcoil.com  
800-824-8282

KDR Drive Reactor  
[REACTOR] Motor Amps [---Max.]  
3PH, 60Hz, 600V Max. [---A Rated.]  
40C Amb Max, 115C Rise

UL<sup>®</sup> US<sup>®</sup> CSA<sup>®</sup> CE

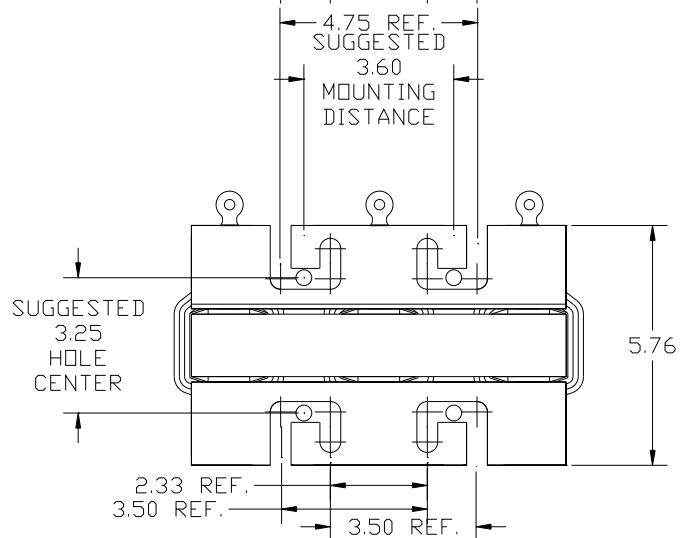
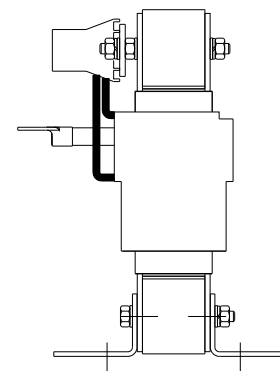
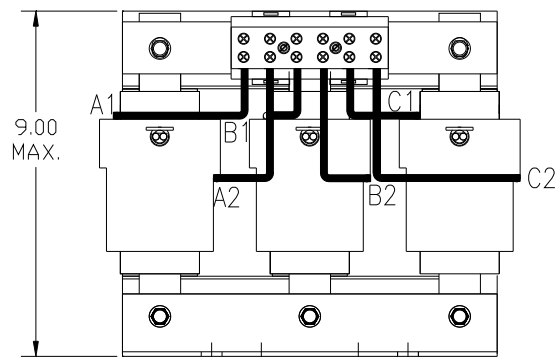
DATE CODE A1 A2 B1 B2 C1 C2

NOTE: A1, AT A2, B1, BT, B2, C1, CT C2, TERMINAL BLOCK AND COIL FOR REFERENCE ONLY.



TERMINAL BLOCK  
TORQUE(LB-IN)=CUSTOMER WIRE

35	= 1 AWG THRU 4 AWG
30	= 6 AWG THRU 14 AWG
25	= 16 AWG THRU 20 AWG
20	= 22 AWG



				TOLERANCES (EXCEPT AS NOTED)		<b>TCI</b> 7878 N. 86th STREET MILWAUKEE, WI 53224	
				DECIMAL			
				.XX ± .03		KDRHITT 30HP, HGP FILTER REACTOR	
				.XXX ± .01			
				FRACTIONAL		DRN BY DSW DATE 6/7/2013 DWG NO 105290DG	
				± 1/32		SCALE TO FIT	
				ANGULAR		APRVL C	
				± 1/2°		SHT. 1 of 1	
NO	REVISION	DATE	BY				