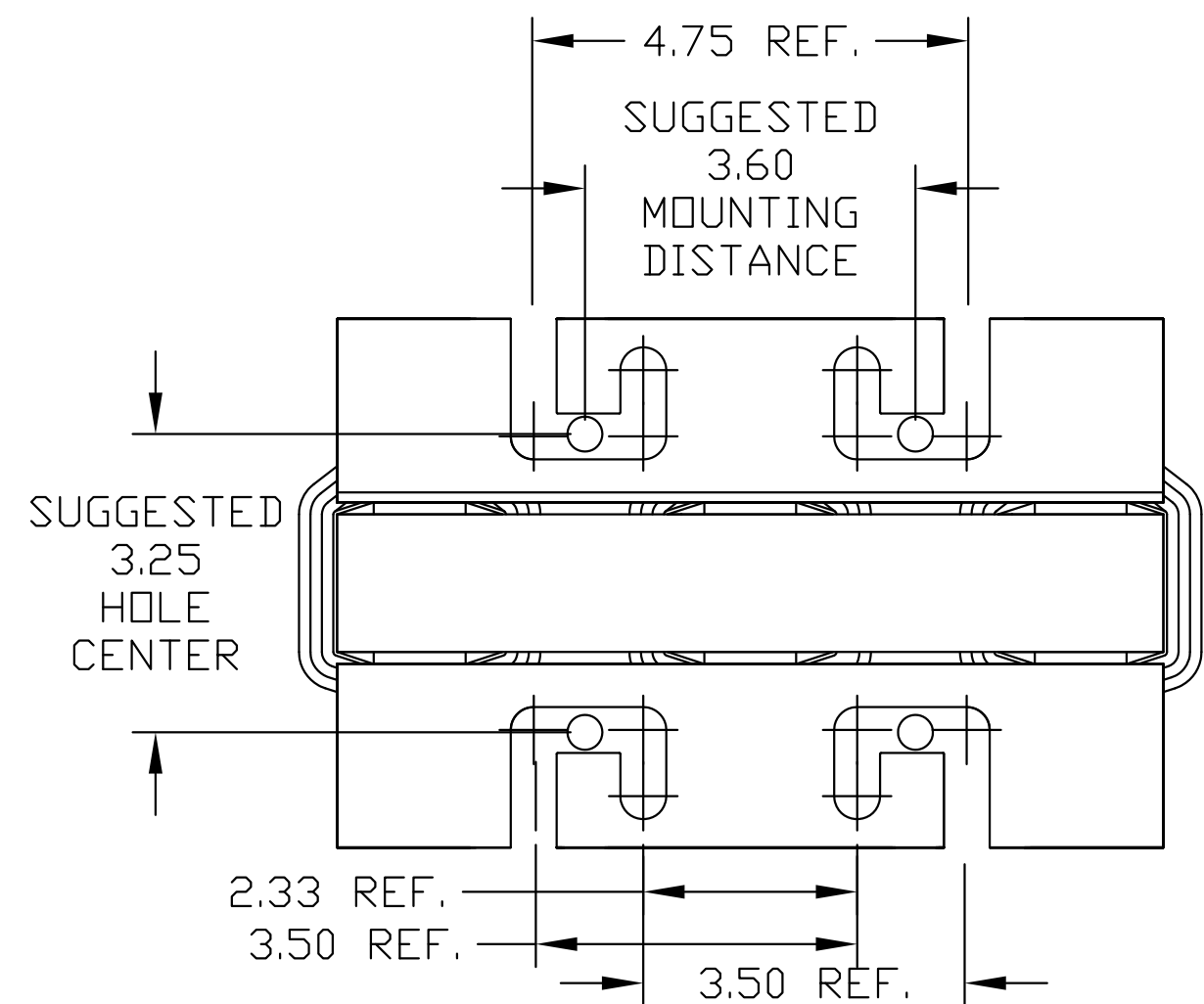
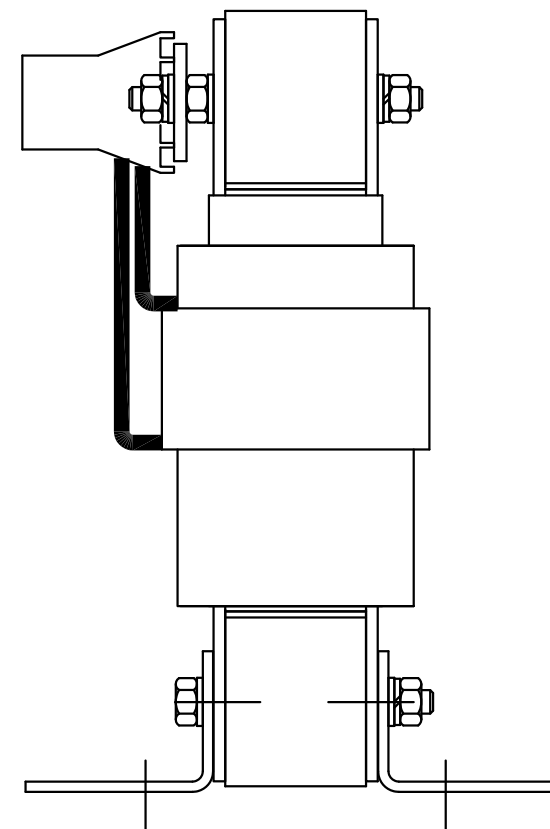
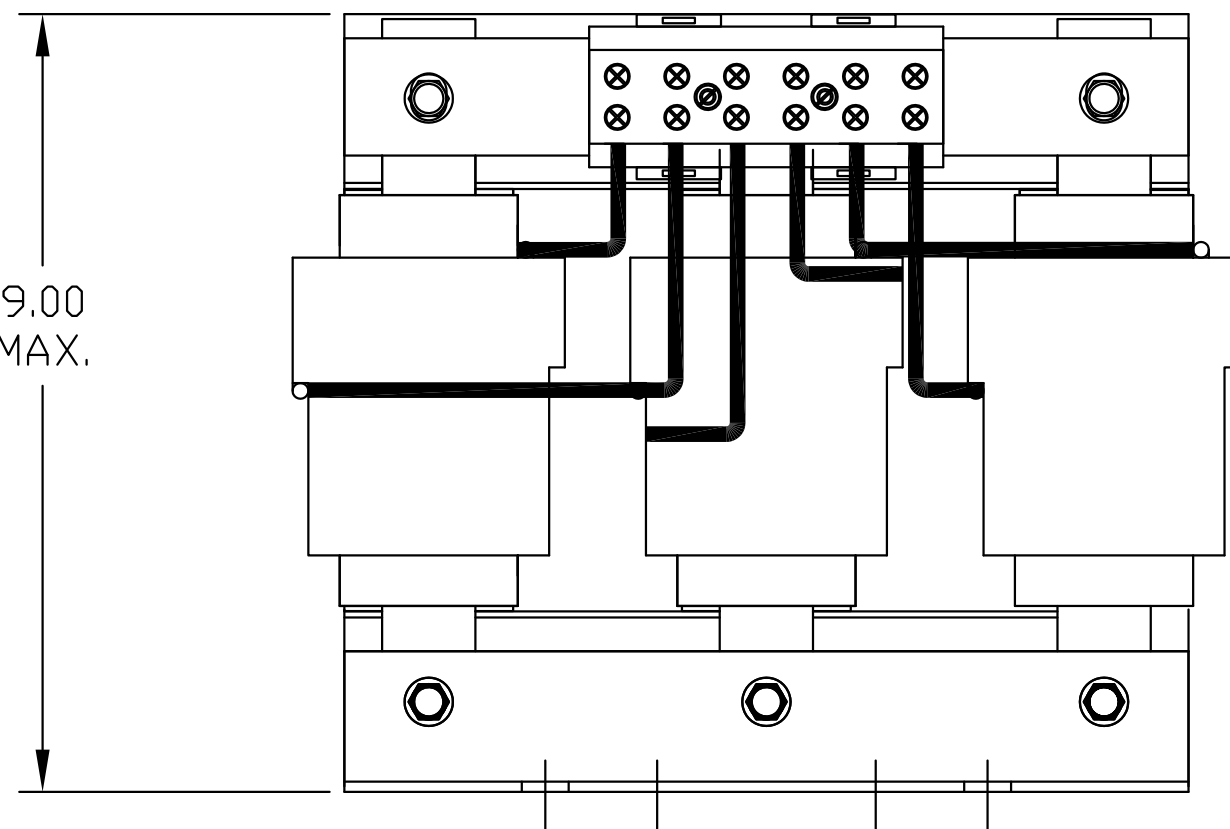
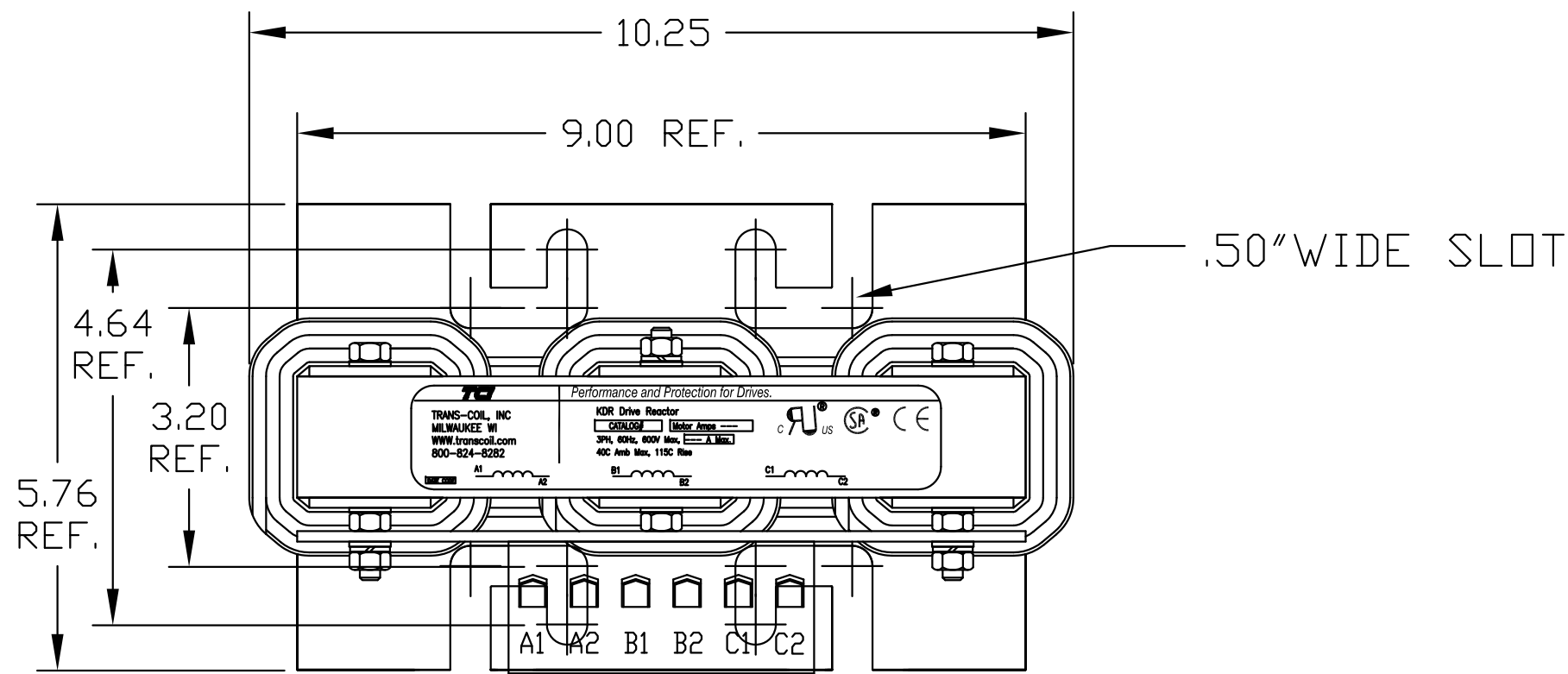


HP	CATALOG NO	--mH ±20%	--AMPS(A)	APPROX WT-LBS
30	KDRH1T	1.84	40	40



TCI

TRANS-COIL, INC
MILWAUKEE WI
WWW.transcoil.com
800-824-8282

Performance and Protection for Drives.

KDR Drive Reactor

CATALOG# KDRH1T Motor Amps 40

3PH, 60Hz, 600V Max, 40 A Max.

40C Amb Max, 115C Rise

UL[®] US SA[®] CE

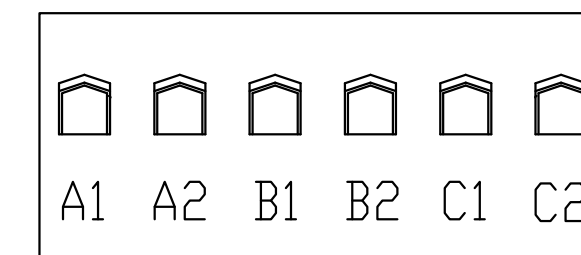
DATE CODE

A1 A2

B1 B2

C1 C2

NOTE: A1, A2, B1, B2, C1, C2,
TERMINAL BLOCK
FOR REFERENCE ONLY.



TERMINAL BLOCK
TORQUE(LB-IN)=CUSTOMER WIRE

35 = 1 AWG THRU 4 AWG
30 = 6 AWG THRU 14 AWG
25 = 16 AWG THRU 20 AWG
20 = 16 AWG

TCI, LLC CLAIMS
PROPRIETARY RIGHTS IN
THE MATERIAL HEREIN
DISCLOSED. IT IS
SUPPLIED WITHOUT
PREDJUDICE TO ANY
PATENT RIGHTS OF TCI
AND MAY NOT BE
REPRODUCED OR USED
TO MANUFACTURE
ANYTHING SHOWN
THEREIN WITHOUT
WRITTEN PERMISSION
FROM TCI.

NO	REVISION	DATE	BY	TOLERANCES (EXCEPT AS NOTED)
				DECIMAL
				.XX ±.03
				.XXX ±.01
				FRACTIONAL
				± 1/32
				ANGULAR
				± 1/2°

W132 N10611 Grant Drive
Germantown, WI 53022

**KDRH1T, 30HP
480 VOLTS, 40 AMPS**

DRN. BY	DATE	DWG. NO.
DSW	2/01/05	102423DG
SCALE	SIZE	
TO FIT	C	SHT.1 OF 1