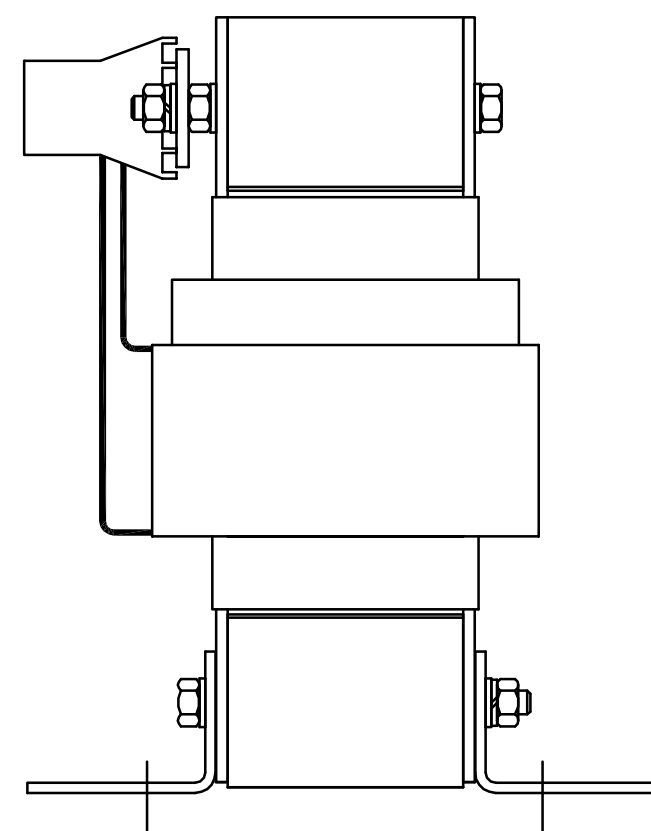
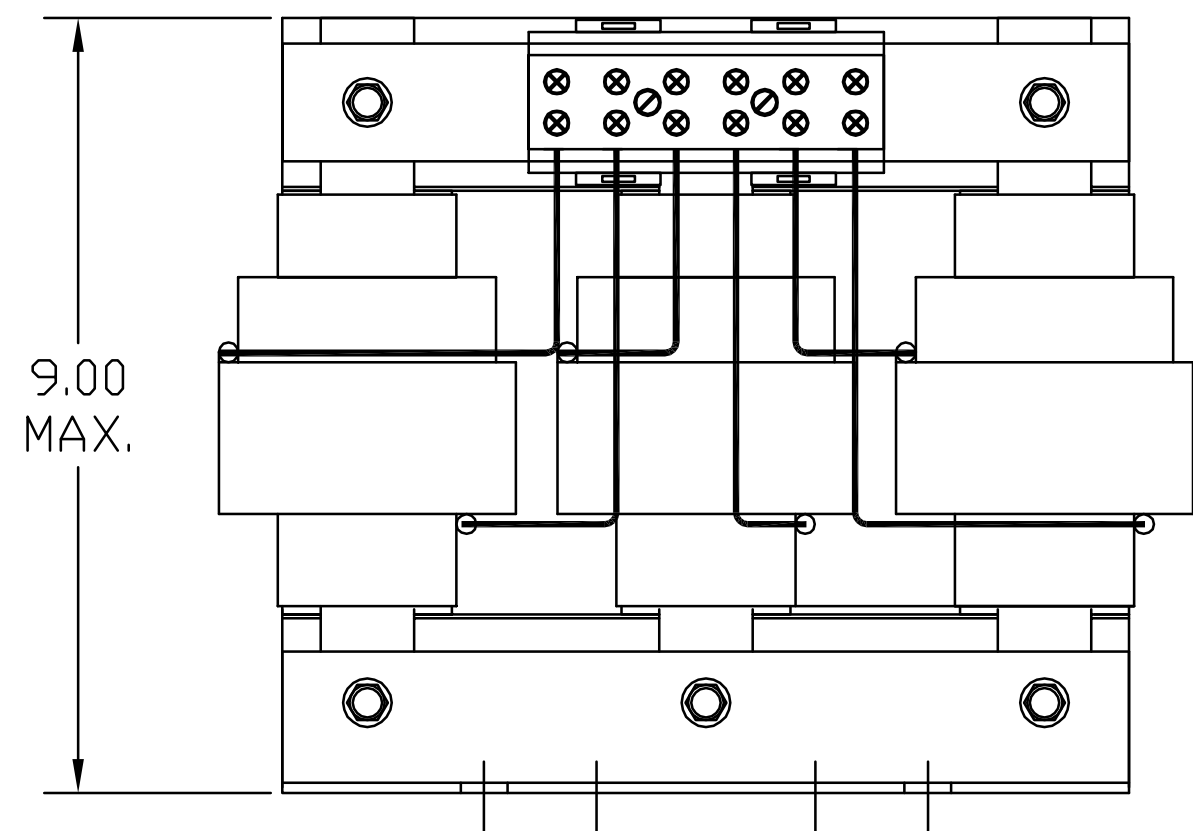
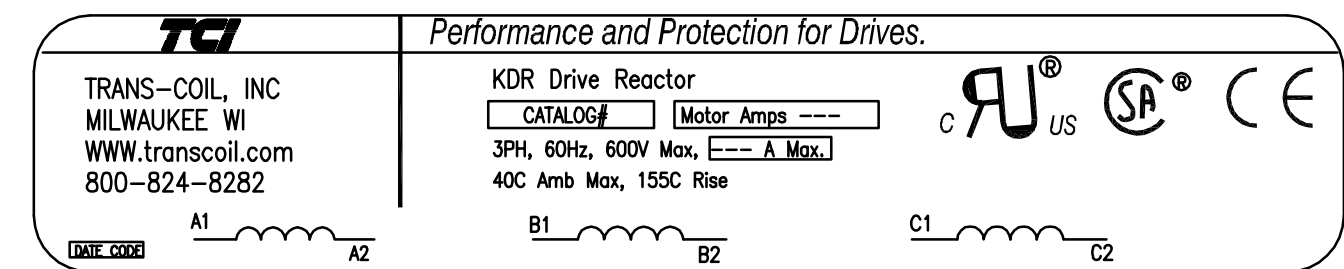
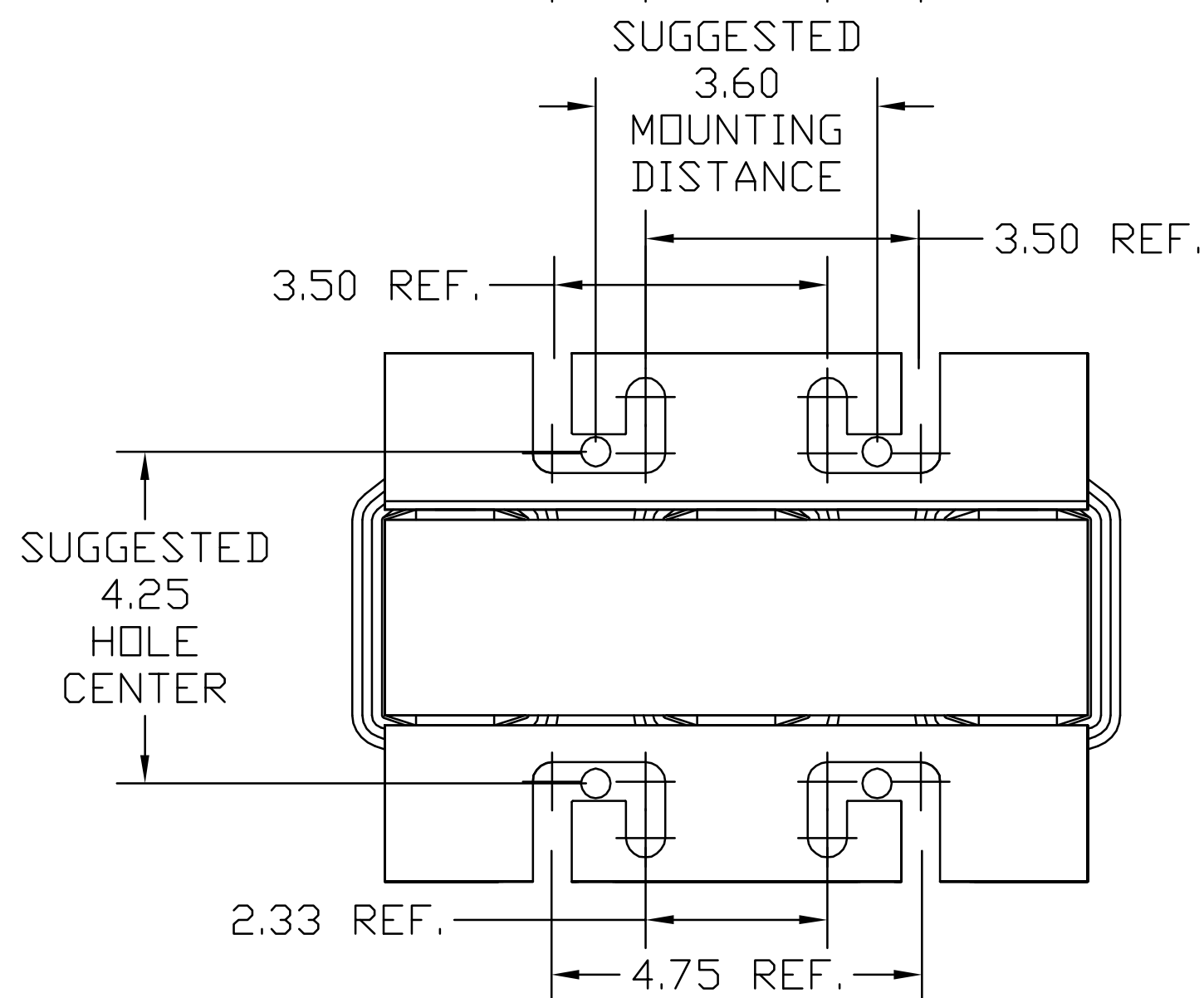
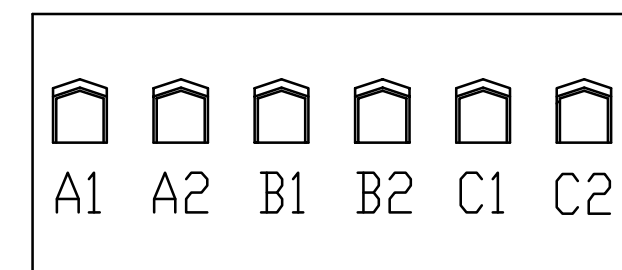


HP	CATALOG NO	--mH ±20%	--AMPS(A)	APPROX WT-LBS
75	KDRG43T	1.19	77	65



TERMINAL BLOCK TORQUE(LB-IN)=CUSTOMER WIRE	
35	= 1 AWG THRU 4 AWG
30	= 6 AWG THRU 14 AWG
25	= 16 AWG THRU 20 AWG
20	= 22 AWG

NOTE: A1, A2, B1, B2, C1, C2,  
TERMINAL BLOCK  
FOR REFERENCE ONLY.



TCI, LLC CLAIMS PROPRIETARY RIGHTS IN THE MATERIAL HEREIN DISCLOSED. IT IS SUPPLIED WITHOUT PREJUDICE TO ANY PATENT RIGHTS OF TCI AND MAY NOT BE REPRODUCED OR USED TO MANUFACTURE ANYTHING SHOWN THEREIN WITHOUT WRITTEN PERMISSION FROM TCI.

NO	REVISION	DATE	BY	TOLERANCES (EXCEPT AS NOTED)
				DECIMAL
				.XX ±.02
				.XXX ±.01
				FRACTIONAL
				± 1/32
				ANGULAR
				± 1/2°

**TCI**® W132 N10611 Grant Drive  
Germantown, WI 53022

KDR (FRAME G)  
KDRG43T, 75HP, 600V 10%

DRN. BY DSW DATE 2/28/05 DWG. NO. 102388DG  
SCALE TO FIT SIZE C SHT.1 OF 1