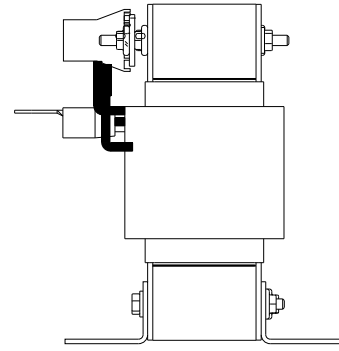
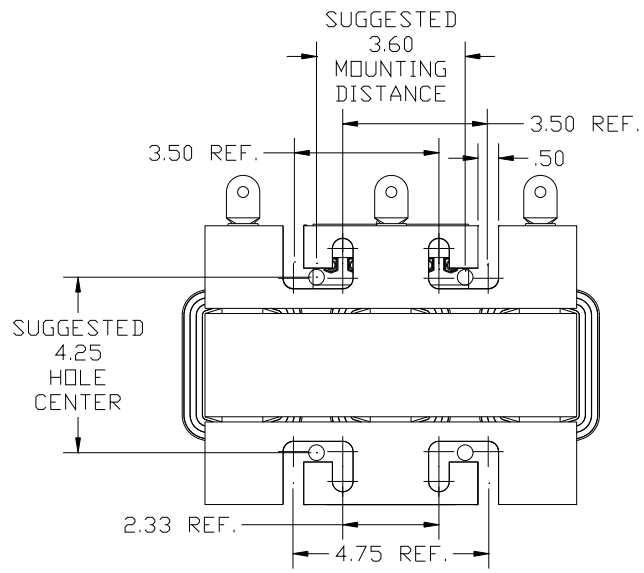
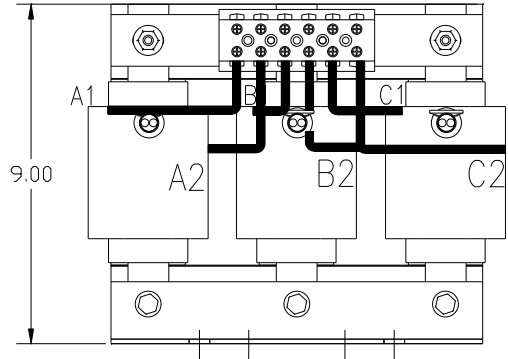
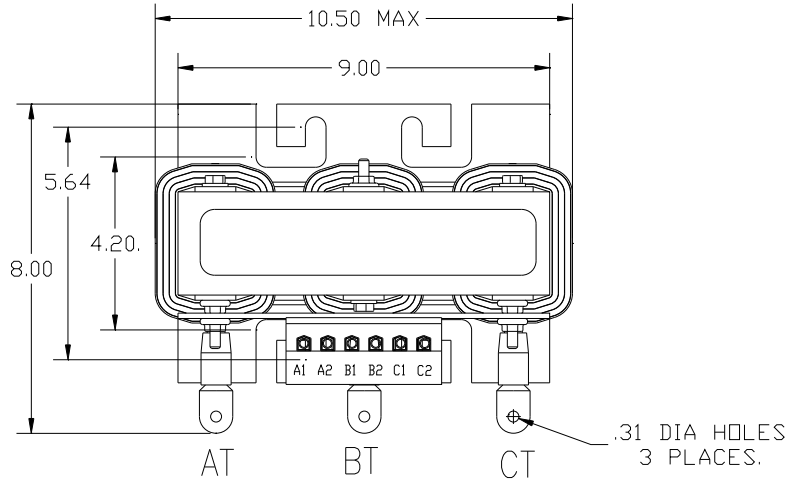


HP	CATALOG NO	RATED AMPS(A)	MAX AMPS(A)	APPROX WT-LBS
60	KDRG42TT	46.38	62	60



**TCL** Performance and Protection for Drives.

TRANS-COIL, INC.  
MILWAUKEE WI  
WWW.TRANS-COIL.COM  
800-824-8282

KDR Drive Reactor  
8523292 Motor Amps: [ ] Max  
3% IONV 400V Max [ ] 50Hz  
40C Amb Max, 155C Rise

UL® CE

TERMINAL BLOCK  
TORQUE(LB-IN)=CUSTOMER WIRE

35 = 1 AWG THRU 4 AWG  
30 = 6 AWG THRU 14 AWG  
25 = 16 AWG THRU 20 AWG  
20 = 22 AWG

NOTE: A1, AT A2, B1, BT, B2, C1, CT C2,  
TERMINAL BLOCK AND COIL  
FOR REFERENCE ONLY.



<p>TCL, LLC CLAIMS PROPRIETARY RIGHTS IN THE MATERIAL HEREIN DISCLOSED. IT IS SUPPLIED WITHOUT PREJUDICE TO ANY PATENT RIGHTS OF TCL AND MAY NOT BE REPRODUCED OR USED TO MANUFACTURE ANYTHING SHOWN THEREIN WITHOUT WRITTEN PERMISSION FROM TCL.</p>	TOLERANCES (EXCEPT AS NOTED):	<p><b>TCL</b> W132 N10611 Grant Drive Germanstown, WI 53022</p> <p>KDRG42TT, 600V 60HP, HGP FILTER REACTOR</p> <p>DRN BY: DSW DATE: 5/30/2014 DWG NO: 105667DG</p> <p>SCALE: TO FIT SIZE: C</p> <p>SHT. 1 OF 1</p>		
	DECIMAL			
	FRACTIONAL			
	ANGULAR			
NO	REVISION	DATE	BY	± 1/2°