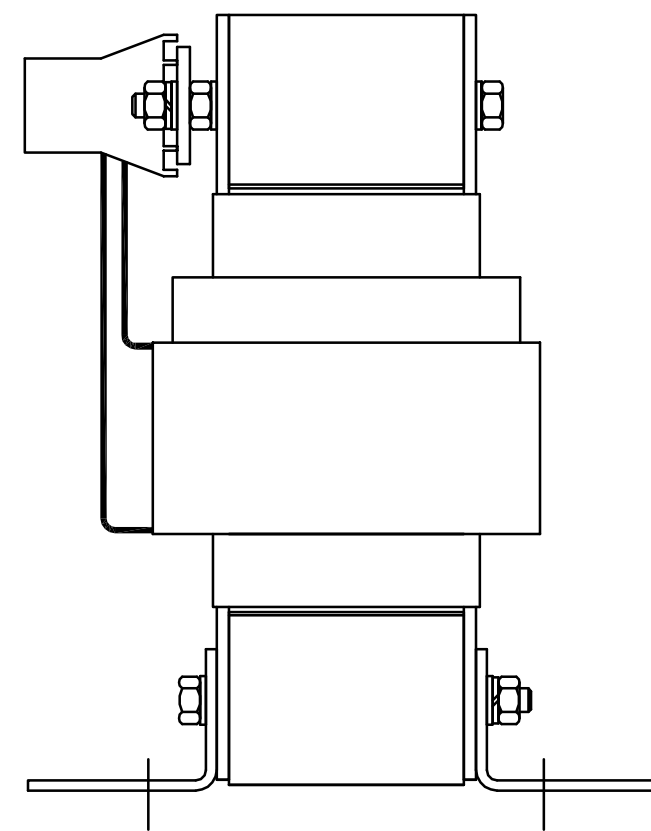
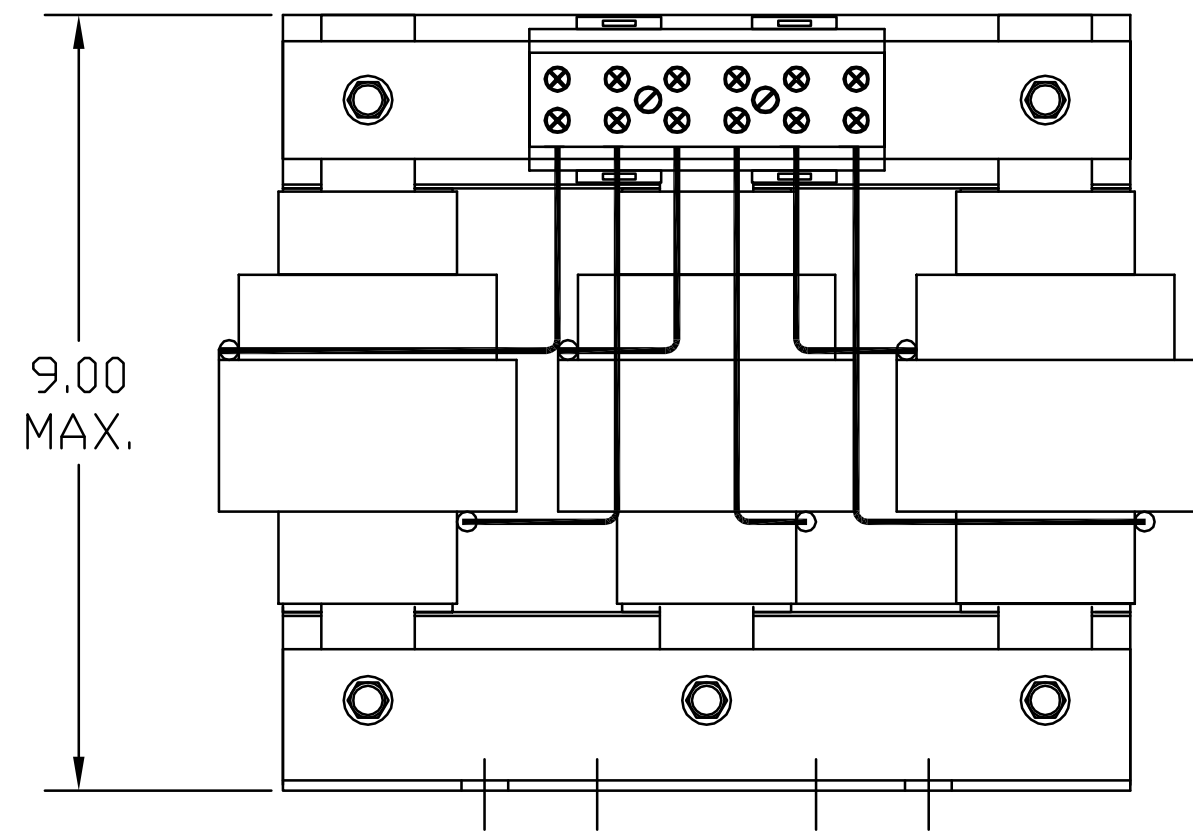


HP	CATALOG NO	--mH ±20%	--AMPS(A)	APPROX WT-LBS
50	KDRG41T	1.77	52	60

TCI TRANS-COIL, INC MILWAUKEE WI WWW.transcoil.com 800-824-8282	Performance and Protection for Drives.	
	KDR Drive Reactor CATALOG# [] Motor Amps [] 3PH, 60Hz, 600V Max, [] A Max. 40C Amb Max, 155C Rise	



TERMINAL BLOCK TORQUE(LB-IN)=CUSTOMER WIRE 35 = 1 AWG THRU 4 AWG 30 = 6 AWG THRU 14 AWG 25 = 16 AWG THRU 20 AWG 20 = 22 AWG
--

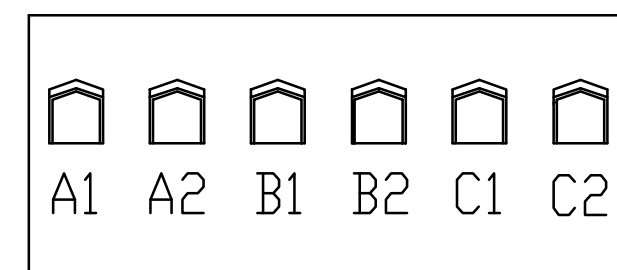
SUGGESTED
3.60
MOUNTING
DISTANCE

3.50 REF. 3.50 REF.

SUGGESTED
4.25
HOLE
CENTER

2.33 REF. 4.75 REF.

NOTE: A1, A2, B1, B2, C1, C2,
TERMINAL BLOCK
FOR REFERENCE ONLY.



TCI, LLC CLAIMS
PROPRIETARY RIGHTS IN
THE MATERIAL HEREIN
DISCLOSED. IT IS
SUPPLIED WITHOUT
PREJUDICE TO ANY
PATENT RIGHTS OF TCI
AND MAY NOT BE
REPRODUCED OR USED
TO MANUFACTURE
ANYTHING SHOWN
THEREIN WITHOUT
WRITTEN PERMISSION
FROM TCI.

NO	REVISION	DATE	BY	TOLERANCES (EXCEPT AS NOTED)
				DECIMAL
				.XX ±.03
				.XXX ±.01
				FRACTIONAL
				± 1/16
				ANGULAR
				± 1/2°

	W132 N10611 Grant Drive Germantown, WI 53022
KDR (FRAME G) KDRG41T, 50HP, 600V, 10%	
DRN. BY dsw SCALE 1/2"=1"	DATE 2/24/05 SIZE C
DWG. NO. 102386dg SHT.1 OF 1	