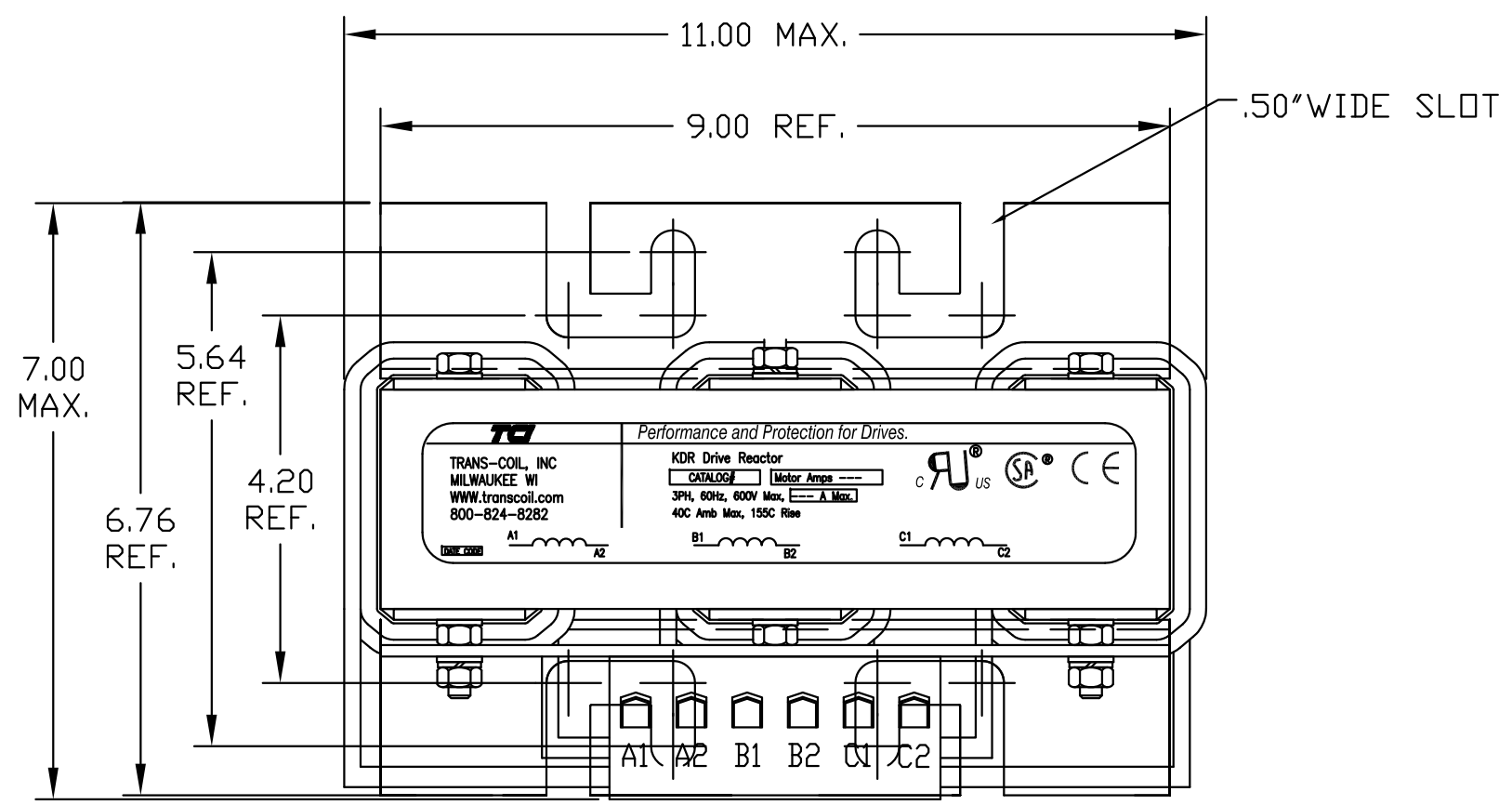
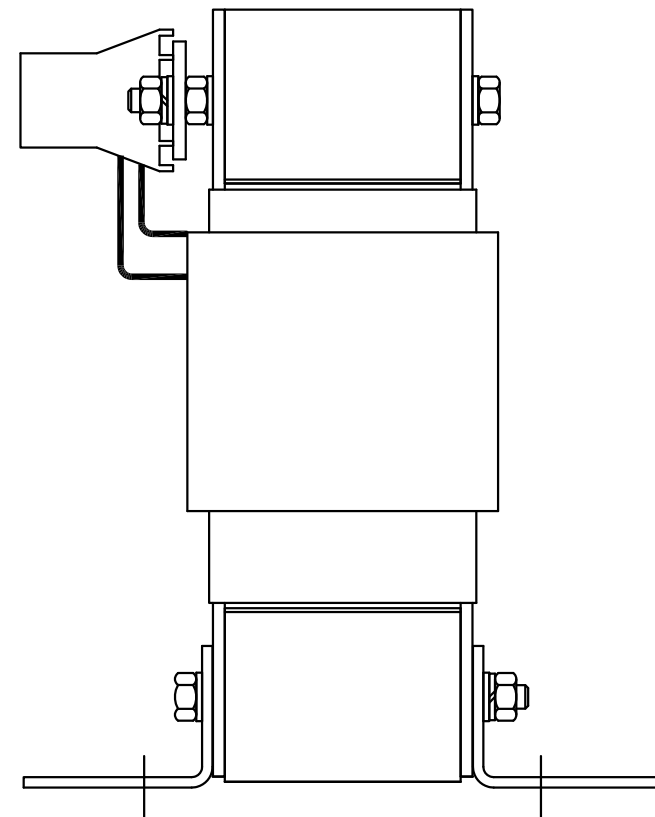
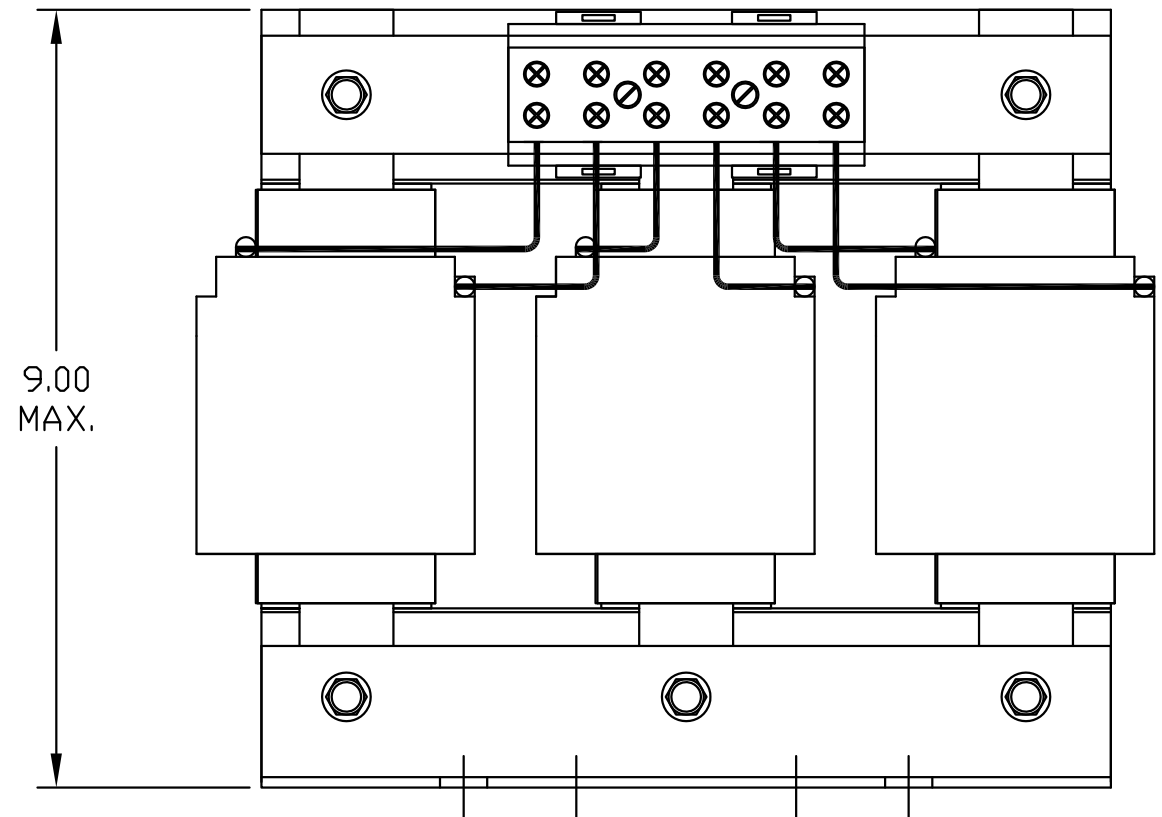


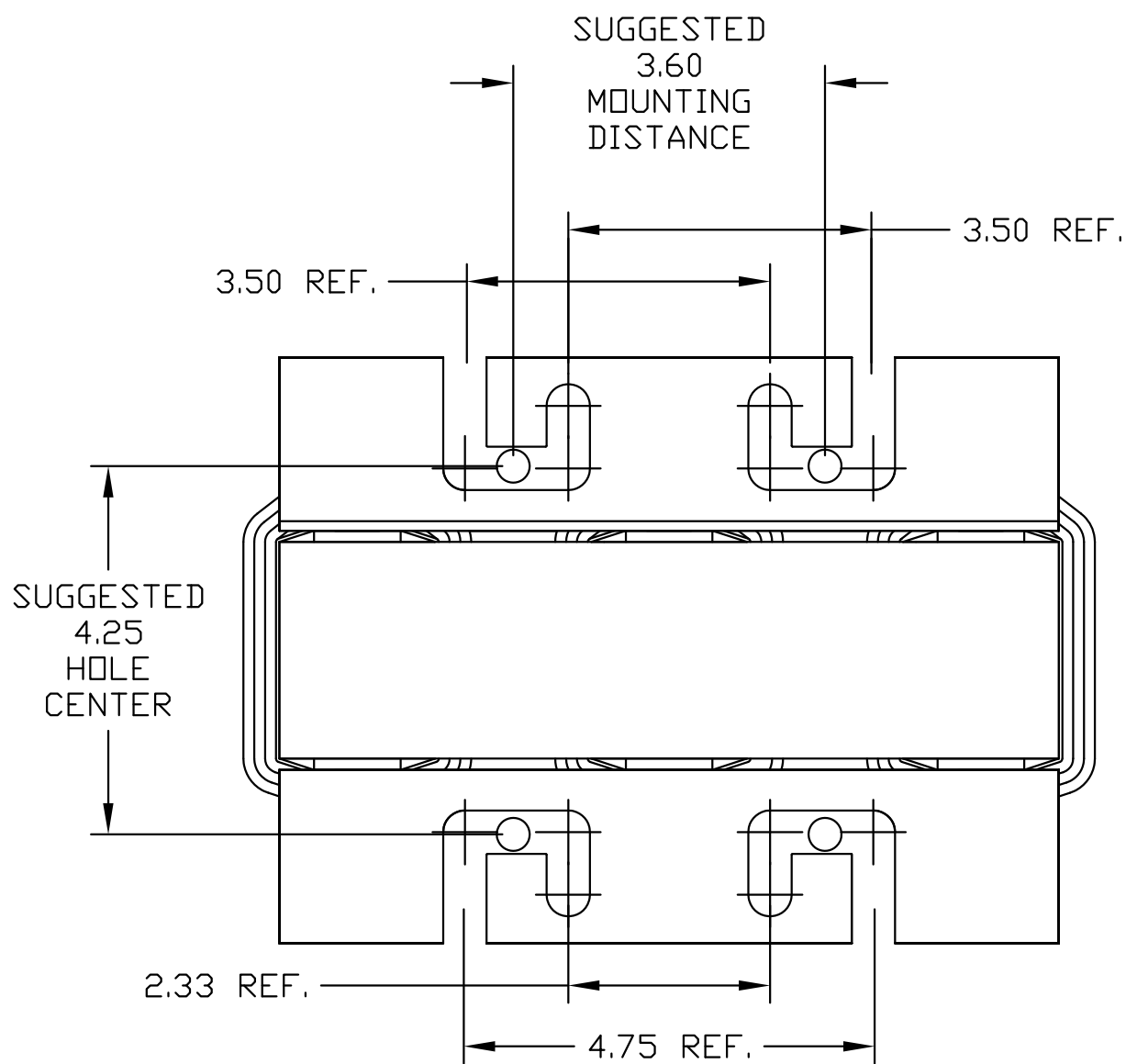
CATALOG NO	--uH ±10%	--AMPS(A)	APPROX WT-LBS
KDRG32T	980	60	58



<b>TCI</b> TRANS-COIL, INC MILWAUKEE WI WWW.transcoil.com 800-824-8282	Performance and Protection for Drives.	
	KDR Drive Reactor CATALOG# Motor Amps --- 3PH, 60Hz, 600V Max, --- A Max. 40C Amb Max, 155C Rise	



TERMINAL BLOCK TORQUE(LB-IN)=CUSTOMER WIRE  35 = 1 AWG THRU 4 AWG 30 = 6 AWG THRU 14 AWG 25 = 16 AWG THRU 20 AWG 20 = 22 AWG
--



NOTE: A1, A2, B1, B2, C1, C2, TERMINAL BLOCK FOR REFERENCE ONLY.

TCI, LLC CLAIMS PROPRIETARY RIGHTS IN THE MATERIAL HEREIN DISCLOSED. IT IS SUPPLIED WITHOUT PREJUDICE TO ANY PATENT RIGHTS OF TCI AND MAY NOT BE REPRODUCED OR USED TO MANUFACTURE ANYTHING SHOWN THEREIN WITHOUT WRITTEN PERMISSION FROM TCI.				TOLERANCES (EXCEPT AS NOTED):	W132 N10611 Grant Drive Germantown, WI 53022	
				DECIMAL		KDRG32T, LINE REACTOR 75A, 400V, 37kW.
					FRACTIONAL	
					ANGULAR	SCALE TO FIT SIZE C SHT.1 OF 1
	A	AS RELEASED	10/21/10	DSW		
	NO	REVISION	DATE	BY		