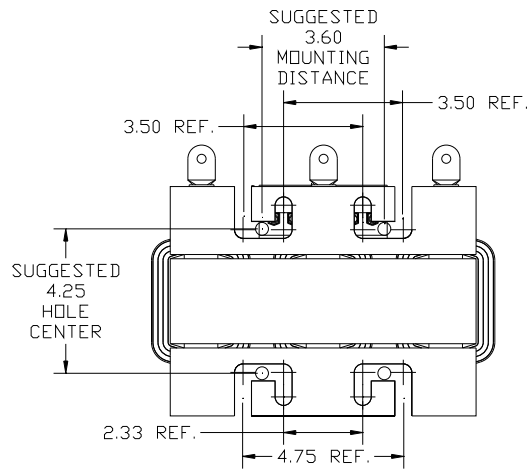
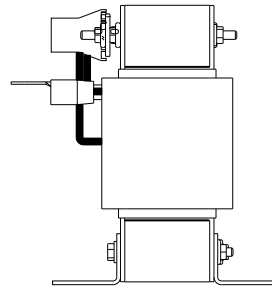
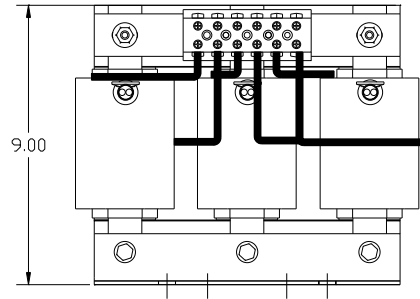
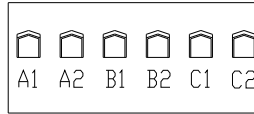


NOTE: A1, AT A2, B1, BT, B2, C1, CT C2, TERMINAL BLOCK AND COIL FOR REFERENCE ONLY.



HP	CATALOG NO	__AMPS(A)	APPROX WT-LBS
60	KDRG2TT	77	59

TCI Performance and Protection for Drives.

TRANS-COIL, INC
MILWAUKEE, WI
WWW.TRANS-COIL.COM
800-824-8282

KDR Drive Reactor
REACTOR
60K, 60Hz, 600V Amps
40C Amp Max, 155C Rise

UL US CE

TERMINAL BLOCK TORQUE(LB-IN)=CUSTOMER WIRE	
35	= 1 AWG THRU 4 AWG
30	= 6 AWG THRU 14 AWG
25	= 16 AWG THRU 20 AWG
20	= 22 AWG

				TOLERANCES EXCEPT AS NOTED:		TCI 7878 N. 86th STREET MILWAUKEE, WI 53224	
				DECIMAL		KDRG2TT	
				.XX ± .03		60HP, HGP FILTER REACTOR	
				.XXX ± .01		DRN BY DSW DATE 6/17/2013 PIV NO 105293DG	
				FRACTIONAL		SCALE TO FIT	
				± 1/32		APPROV C	
				ANGULAR		SHI. 1 DFI	
				± 1/2°			
NO	REVISION	DATE	BY				