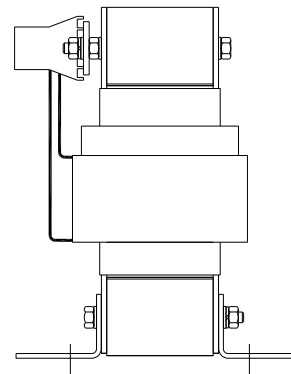
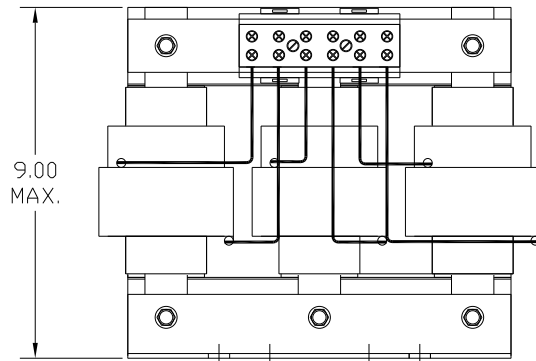
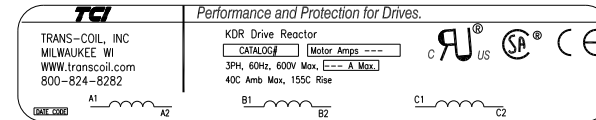
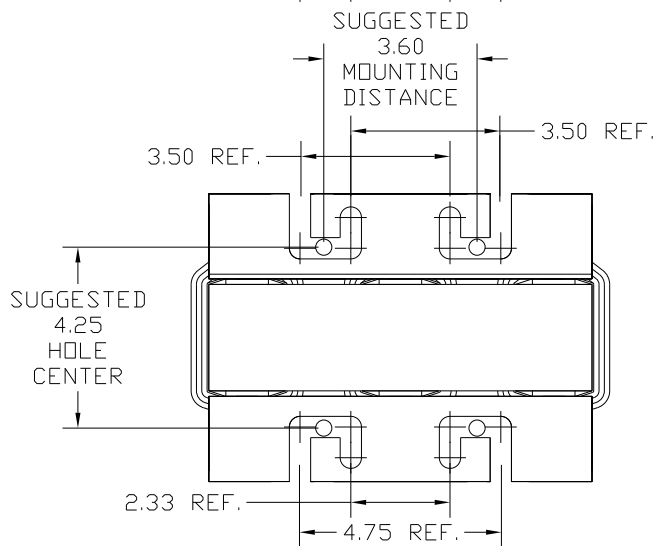


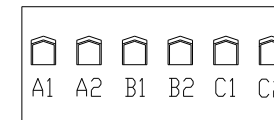
HP	CATALOG NO	--mH ±20%	--AMPS(A)	APPROX WT-LBS
60	KDRG2T	.955	77	65



TERMINAL BLOCK	
TORQUE(LB-IN)=CUSTOMER WIRE	
35	= 1 AWG THRU 4 AWG
30	= 6 AWG THRU 14 AWG
25	= 16 AWG THRU 20 AWG
20	= 22 AWG



NOTE: A1, A2, B1, B2, C1, C2,
TERMINAL BLOCK
FOR REFERENCE ONLY.



				TOLERANCES (EXCEPT AS NOTED):	7878 N. 86th STREET MILWAUKEE, WI 53224 KDRG2T, 60HP 480 Volts, 77 Amps
				DECIMAL	
				.XX ± .03 .XXX ± .01	
				FRACTIONAL ± 1/32	
				ANGULAR ± 1/2°	DRN BY DSW DATE 02/01/05 DWG NO 102426DG SCALE TO FIT APPRVD C SH1.1 OF1
NO	REVISION	DATE	BY		