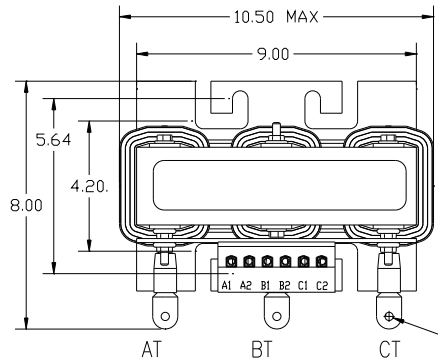
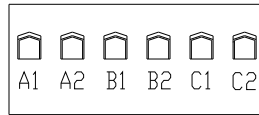


HP	CATALOG NO	_ _AMPS(A)	APPROX WT-LBS
50	KDRG1TT	65	60



NOTE: A1, AT A2, B1, BT, B2, C1, CT C2, TERMINAL BLOCK AND COIL FOR REFERENCE ONLY.



.31 DIA HOLES
3 PLACES.

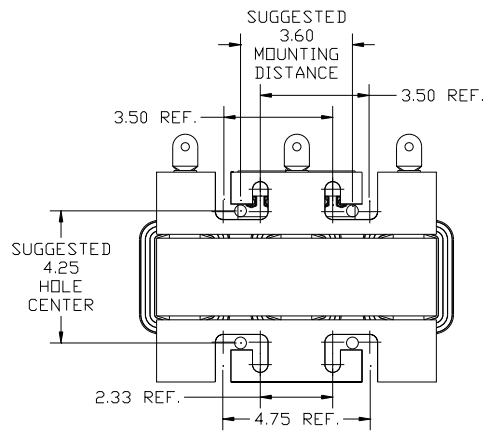
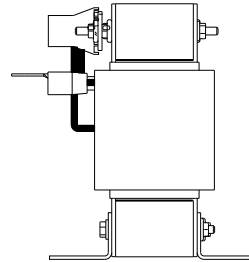
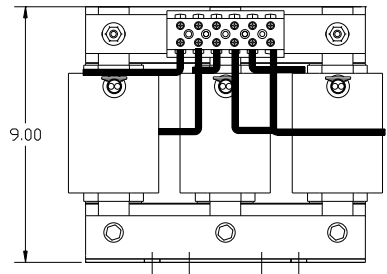
TCI Performance and Protection for Drives.

TRANS-COIL, INC.
MILWAUKEE WI
WWW.TRANSCOIL.COM
800-524-8282

KDR Drive Reactor
REACTOR Motor Amps [] Max. []
3Ph. 60Hz, 600V Max. [] A [] B [] C []
KDC Amps Max. 1500 Amp

UL® US CE

TERMINAL BLOCK TORQUE(LB-IN)=CUSTOMER WIRE	
35	= 1 AWG THRU 4 AWG
30	= 6 AWG THRU 14 AWG
25	= 16 AWG THRU 20 AWG
20	= 22 AWG



				TOLERANCES (EXCEPT AS NOTED)		TCI 7878 N. 86th STREET MILWAUKEE, WI 53224	
				DECIMAL		KDRG1TT	
				.XX ± .03		50HP, HGP FILTER REACTOR	
				.XXX ± .01		DRN BY DSW DATE 5/17/2013 DWG NO 105292DG	
				FRACTIONAL		SCALE TO FIT	
				± 1/32		APPRV C	
				ANGULAR		SHT.1 OF 1	
				± 1/2°			
NO	REVISION	DATE	BY				