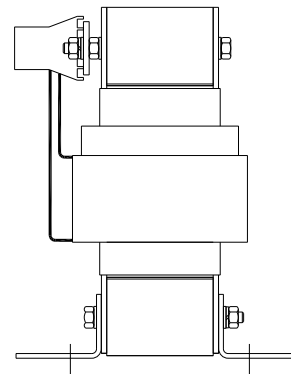
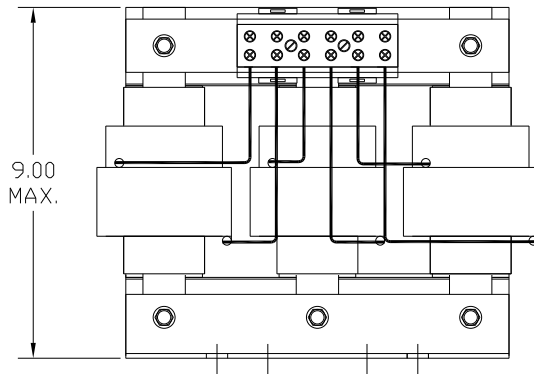
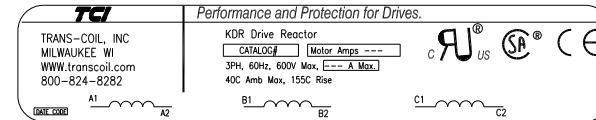
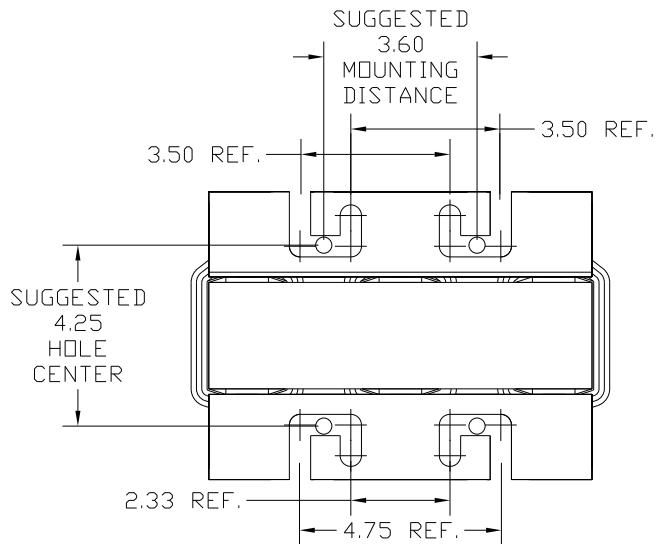


HP	CATALOG NO	--mH ±20%	--AMPS(A)	APPROX WT-LBS
50	KDRG1T	1.13	65	60

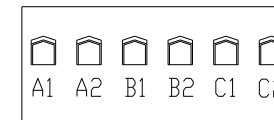


TERMINAL BLOCK  
 TORQUE(LB-IN)=CUSTOMER WIRE

35 = 1 AWG THRU 4 AWG  
 30 = 6 AWG THRU 14 AWG  
 25 = 16 AWG THRU 20 AWG  
 20 = 22 AWG



NOTE: A1, A2, B1, B2, C1, C2,  
 TERMINAL BLOCK  
 FOR REFERENCE ONLY.



				TOLERANCES (EXCEPT AS NOTED): DECIMAL	7878 N. 86th STREET MILWAUKEE, WI 53224  KDRG1T, 50HP 480 Volts, 65 Amps
				.XX ± .03	
				.XXX ± .01	
				FRACTIONAL ± 1/32	
				ANGULAR ± 1/2°	DRN BY DSW DATE 02/01/05 DWG NO 102425DG SCALE TO FIT APPRVD C SH. 1 OF 1
NO	REVISION	DATE	BY		