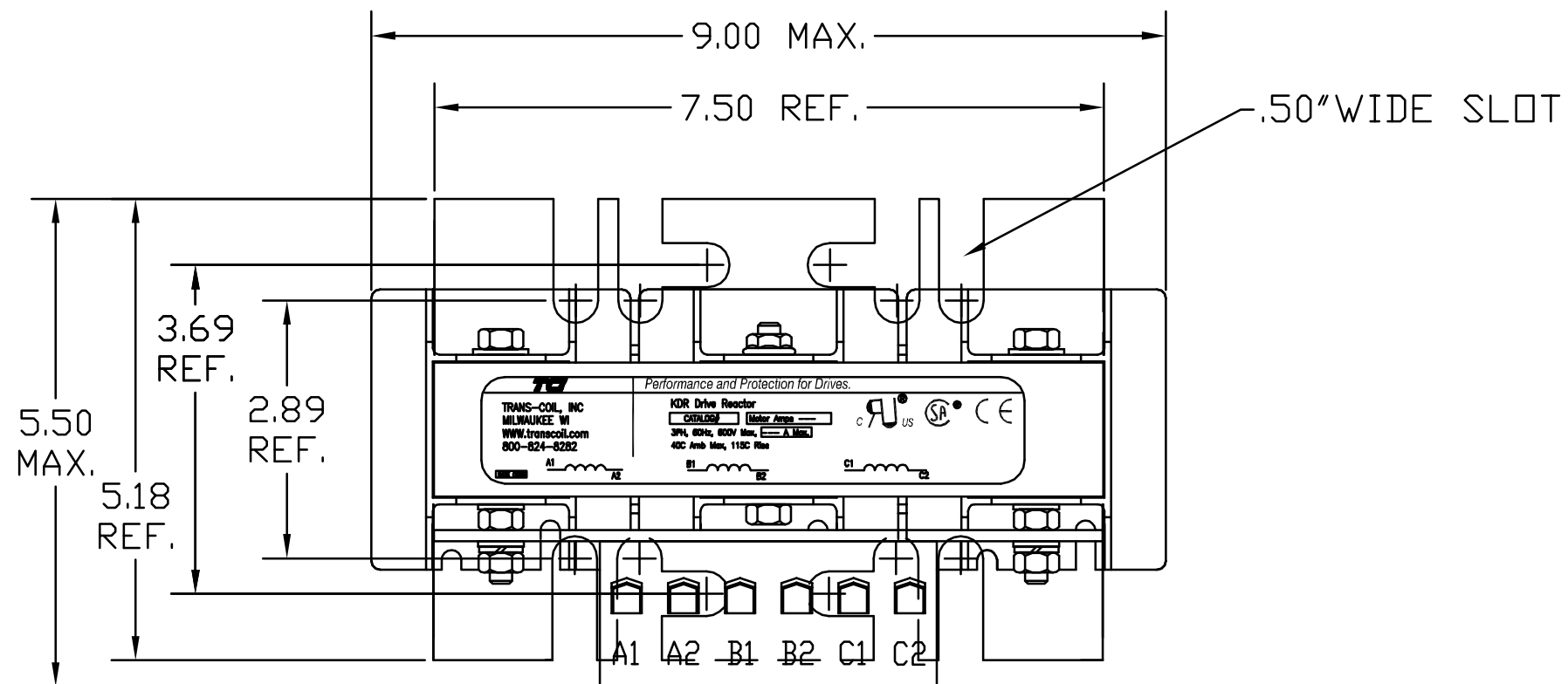
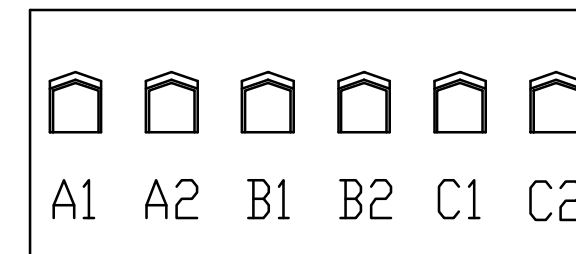


HP	CATALOG NO	--mH ±20%	--AMPS(A)	APPROX WT-LBS
15	KDRF41T	5.41	17	25

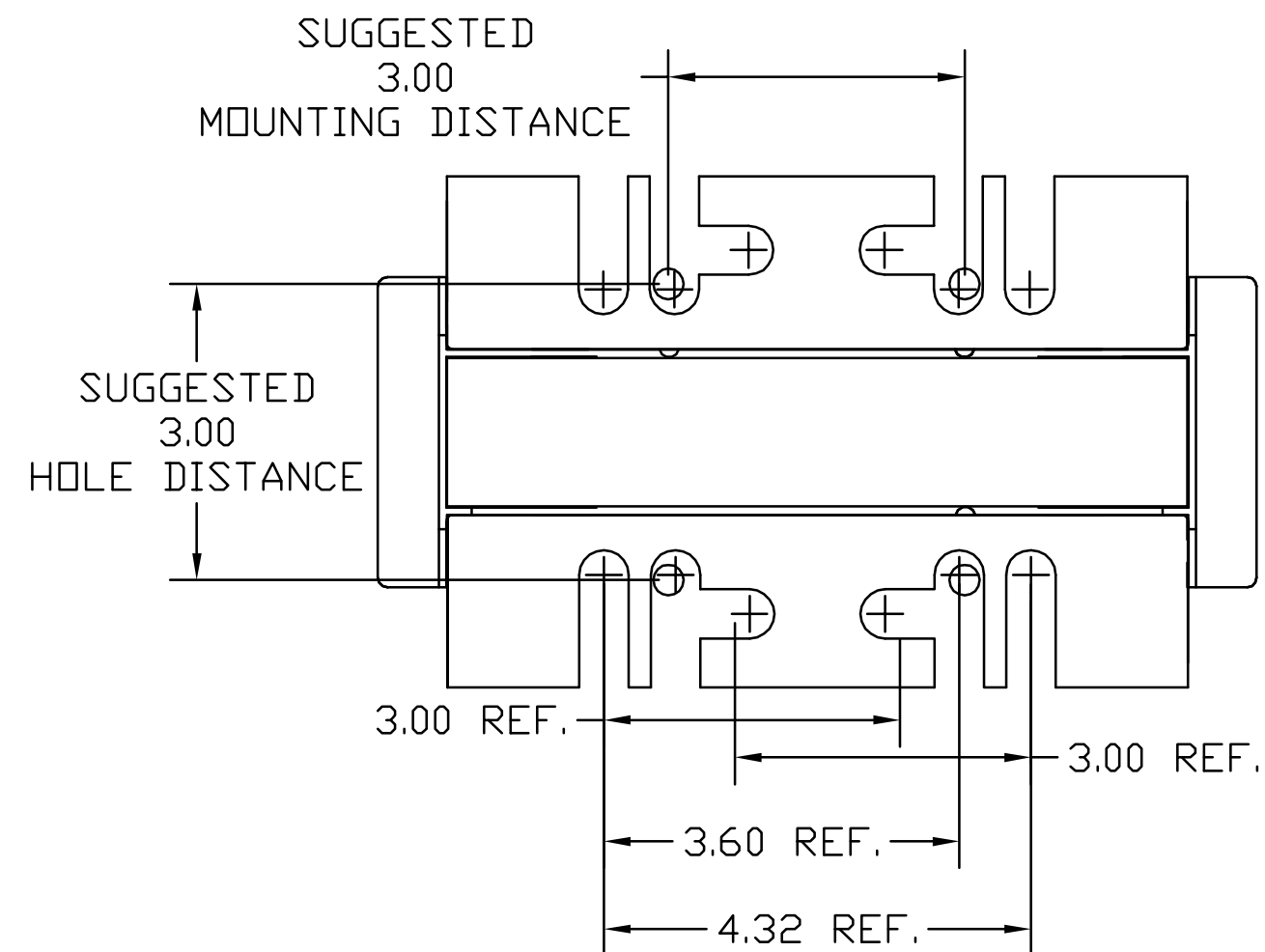
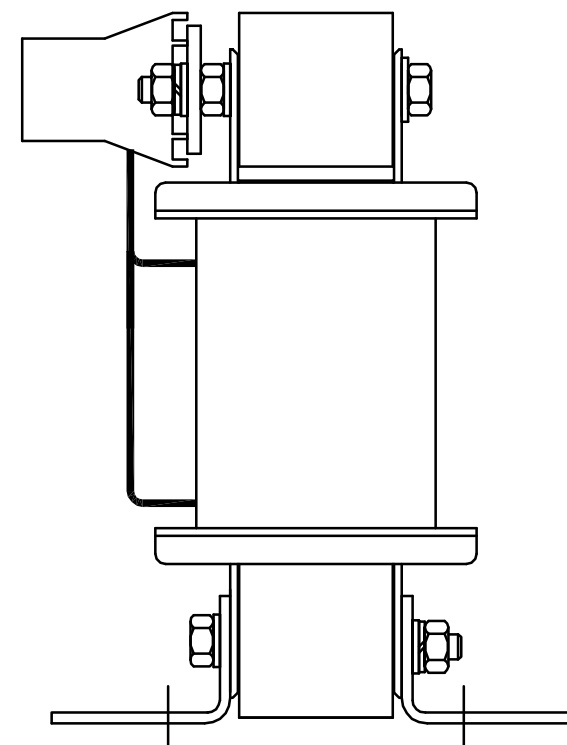
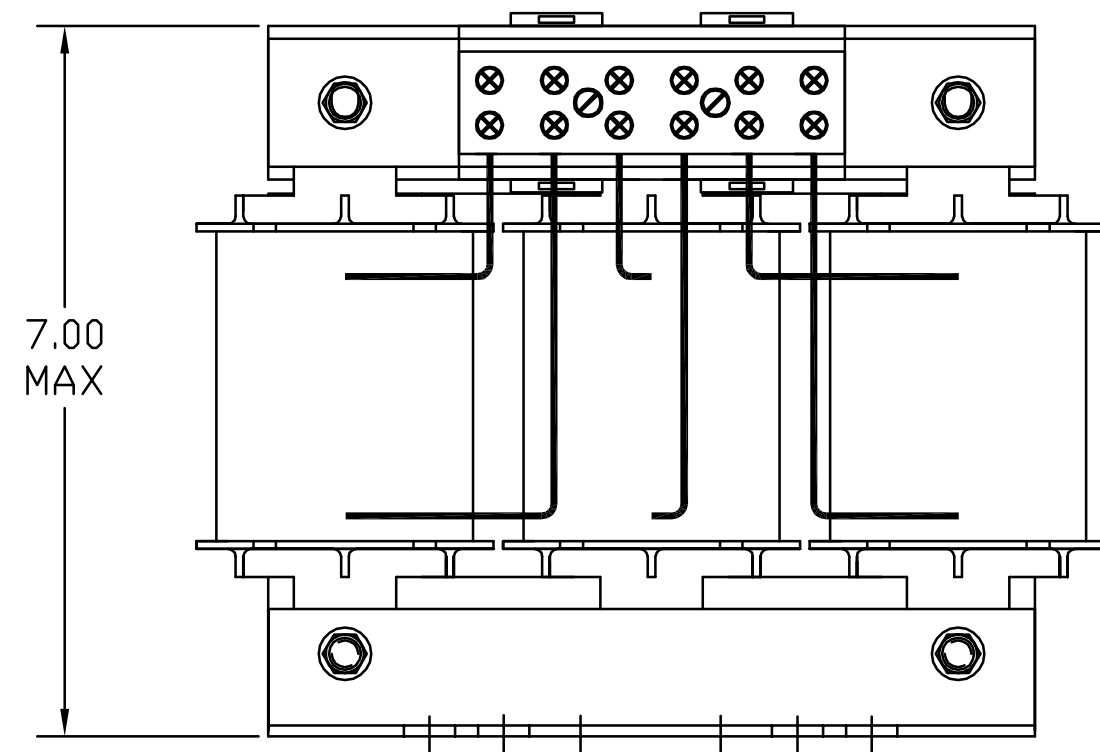


TCI TRANS-COIL, INC MILWAUKEE WI WWW.transcoil.com 800-824-8282	Performance and Protection for Drives.		
	KDR Drive Reactor CATALOG# <input type="text"/> Motor Amps <input type="text"/> 3PH, 60Hz, 600V Max, <input type="text"/> A Max. 40C Amb Max, 115C Rise		



NOTE: A1, A2, B1, B2, C1, C2, MARKINGS ON TERMINAL BLOCK FOR REFERENCE ONLY.

TORQUE(LB-IN)=CUSTOMER WIRE
 35=1 AWG THRU 4 AWG
 30=6 AWG THRU 14 AWG
 25=16 AWG THRU 20 AWG
 20= 22 AWG



TCI, LLC CLAIMS PROPRIETARY RIGHTS IN THE MATERIAL HEREIN DISCLOSED. IT IS SUPPLIED WITHOUT PREJUDICE TO ANY PATENT RIGHTS OF TCI AND MAY NOT BE REPRODUCED OR USED TO MANUFACTURE ANYTHING SHOWN THEREIN WITHOUT WRITTEN PERMISSION FROM TCI.				TOLERANCES (EXCEPT AS NOTED):	W132 N10611 Grant Drive Germantown, WI 53022 KDR (FRAME F) KDRF41T, 15HP, 600V, 10%
				DECIMAL	
				.XX ±.03	
				.XXX±.01	
				FRACTIONAL ± 1/32	
	A GAP WAS .005	11/16/07	DSW	ANGULAR ± 1/2°	DRN. BY DSW DATE 1/27/05 DWG. NO. 102365DG
	NO REVISION	DATE	BY	SCALE TO FIT	SIZE C SHT.1 OF 1