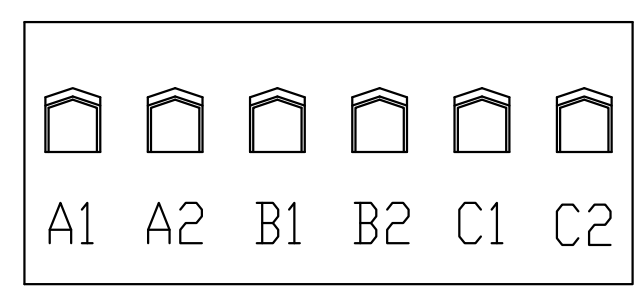
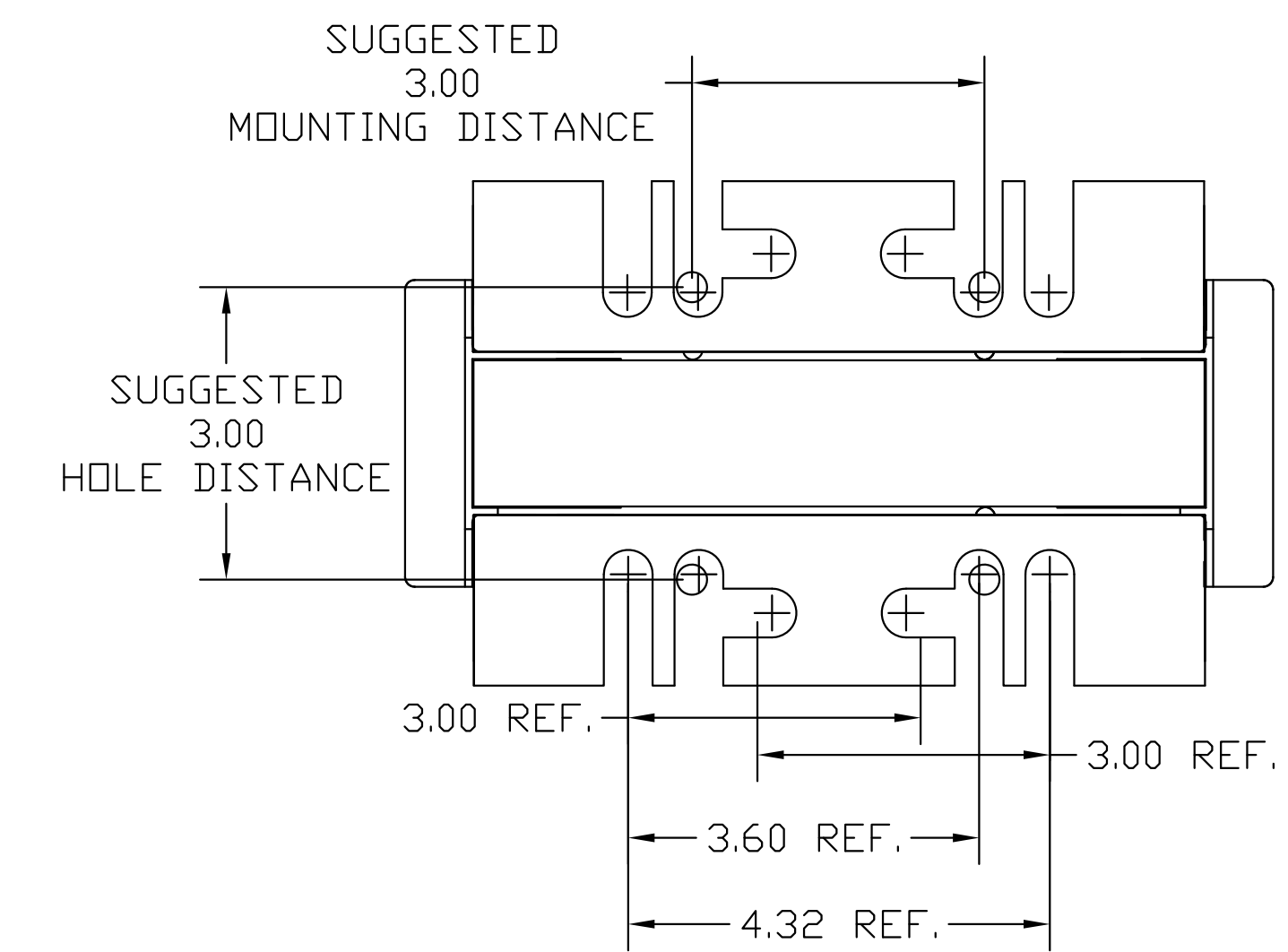
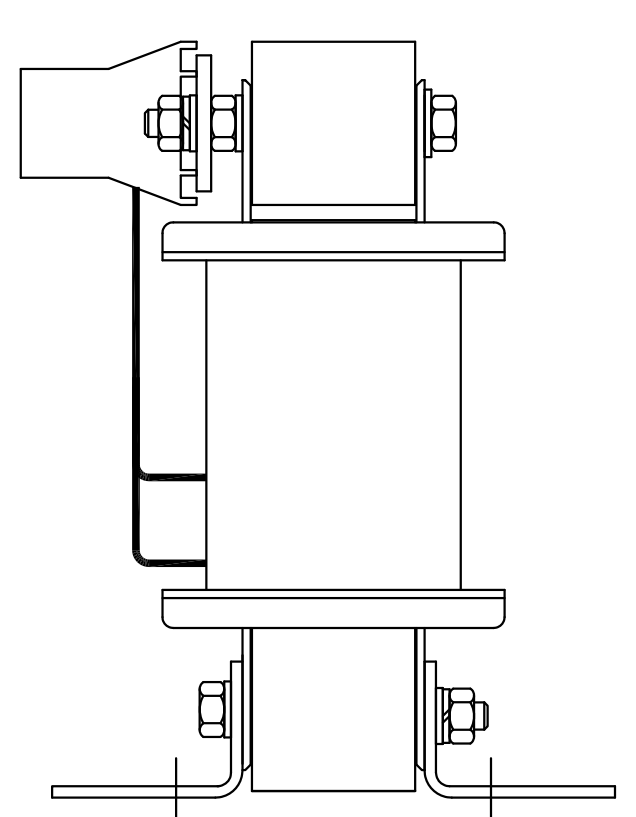
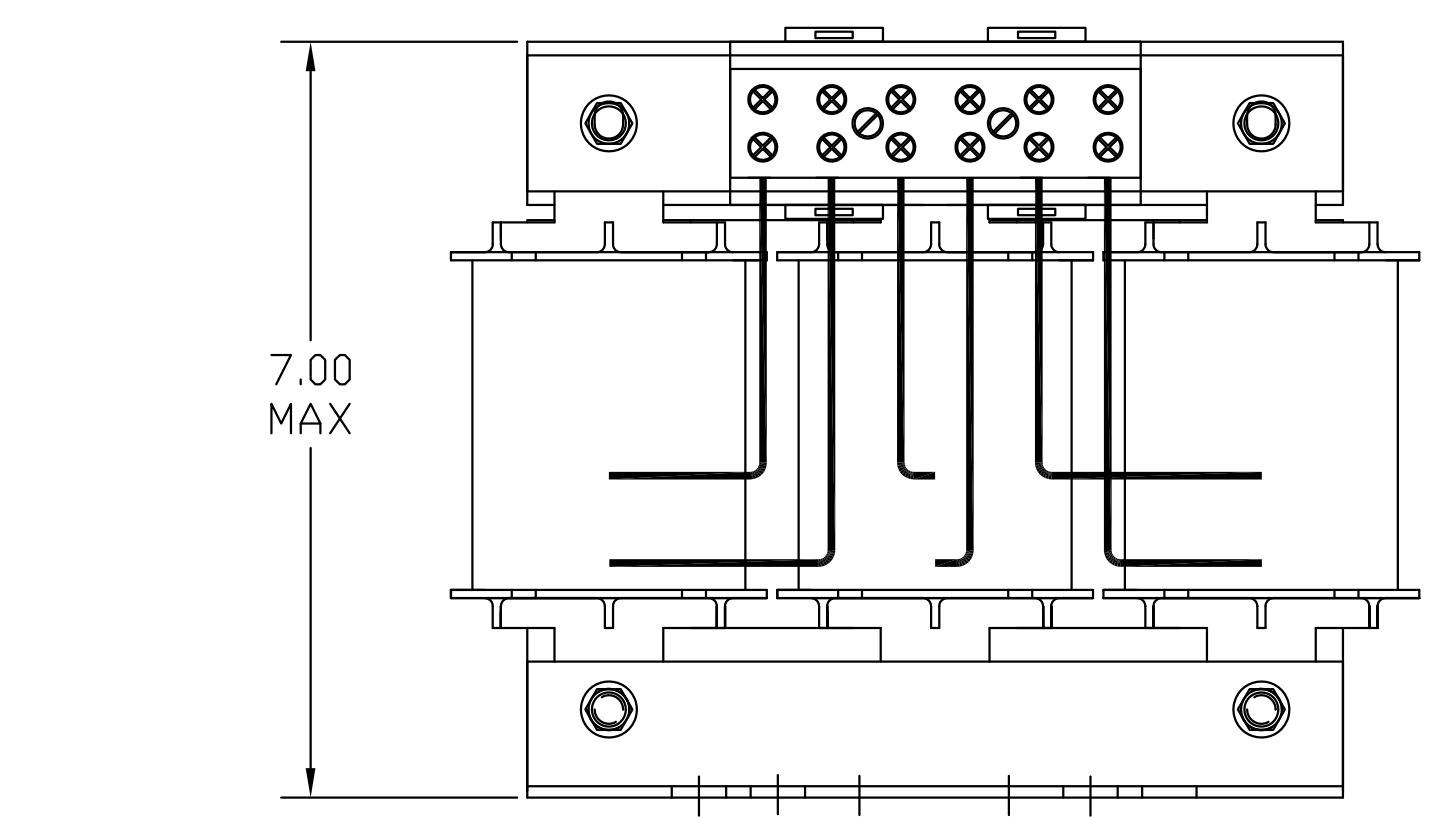
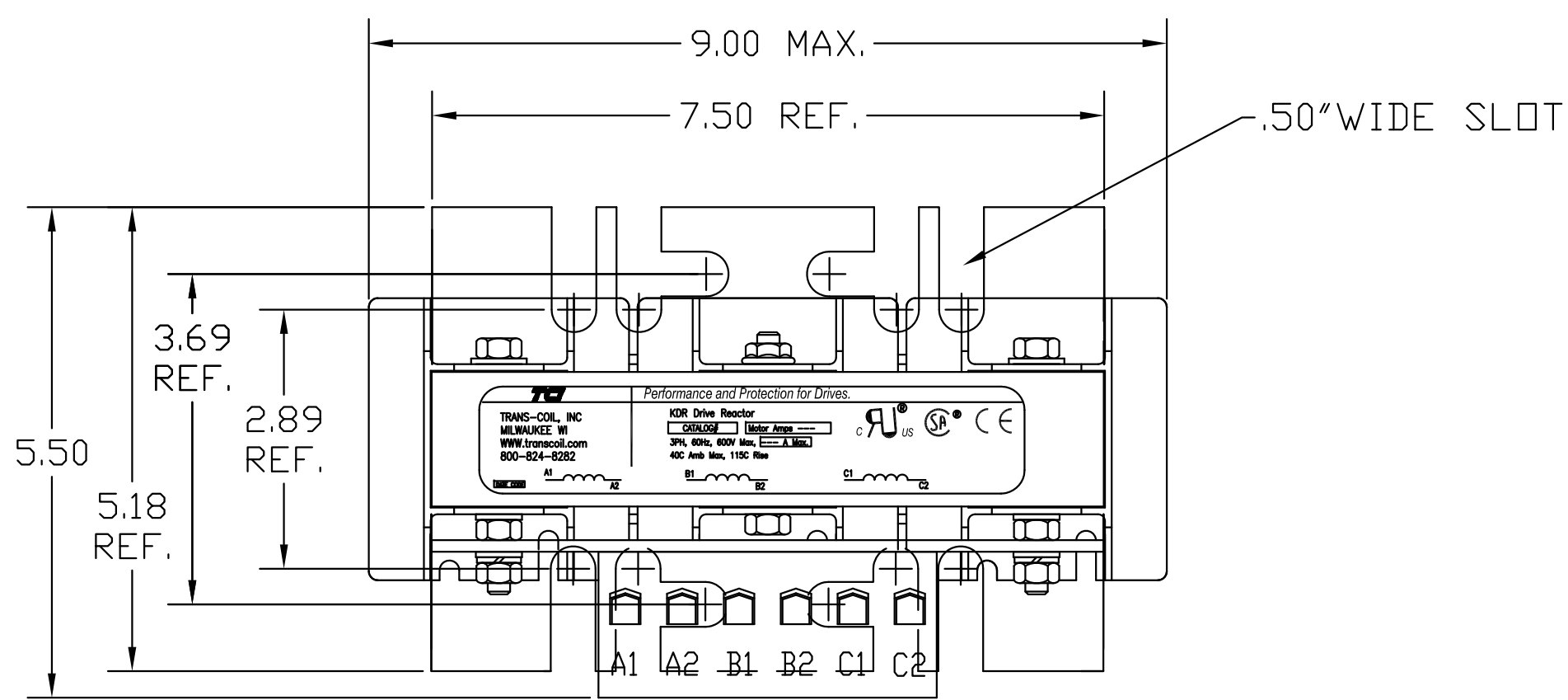


HP	CATALOG NO	--mH ±20%	--AMPS(A)	APPROX WT-LBS
25	KDRF3T	2.16	34	30

**TCI**  
TRANS-COIL, INC  
MILWAUKEE WI  
WWW.transcoil.com  
800-824-8282

*Performance and Protection for Drives.*

KDR Drive Reactor  
 CATALOG#  Motor Amps   
 3PH, 60Hz, 600V Max,  A Max.  
 40C Amb Max, 115C Rise



NOTE: A1, A2, B1, B2, C1, C2,  
ON TERMINAL BLOCK  
FOR REFERENCE ONLY.

TORQUE(LB-IN)=CUSTOMER WIRE  
 35=1 AWG THRU 4 AWG  
 30=6 AWG THRU 14 AWG  
 25=16 AWG THRU 20 AWG  
 20=22 AWG

TCI, LLC CLAIMS PROPRIETARY RIGHTS IN THE MATERIAL HEREIN DISCLOSED. IT IS SUPPLIED WITHOUT PREJUDICE TO ANY PATENT RIGHTS OF TCI AND MAY NOT BE REPRODUCED OR USED TO MANUFACTURE ANYTHING SHOWN THEREIN WITHOUT WRITTEN PERMISSION FROM TCI.						TOLERANCES (EXCEPT AS NOTED): DECIMAL .XX ±.03 .XXX ±.01 FRACTIONAL ± 1/32 ANGULAR ± 1/2°		W132 N10611 Grant Drive Germantown, WI 53022
							<b>KDRF3T, 25HP</b> <b>480 VOLTS, 30 AMPS</b>	
							DRN. BY DSW    DATE 1/27/05    DWG. NO. 102422DG SCALE TO FIT    SIZE C	SHT.1 OF 1
	NO	REVISION	DATE	BY				