

CATALOG NO	--mH ±10%	--AMPS(A)	APPROX WT-LBS
KDRF31T	3.06	24	25

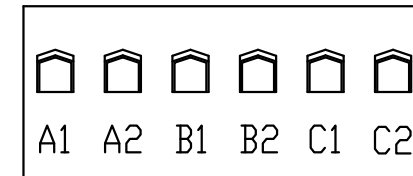
TCI Performance and Protection for Drives.

TRANS-COIL, INC
MILWAUKEE WI
WWW.transcoil.com
800-824-8282

KDR Drive Reactor
CATALOG# Motor Amps ---
3PH, 50Hz, 600V Max, --- A Max.
40C Amb Max, 115C Rise

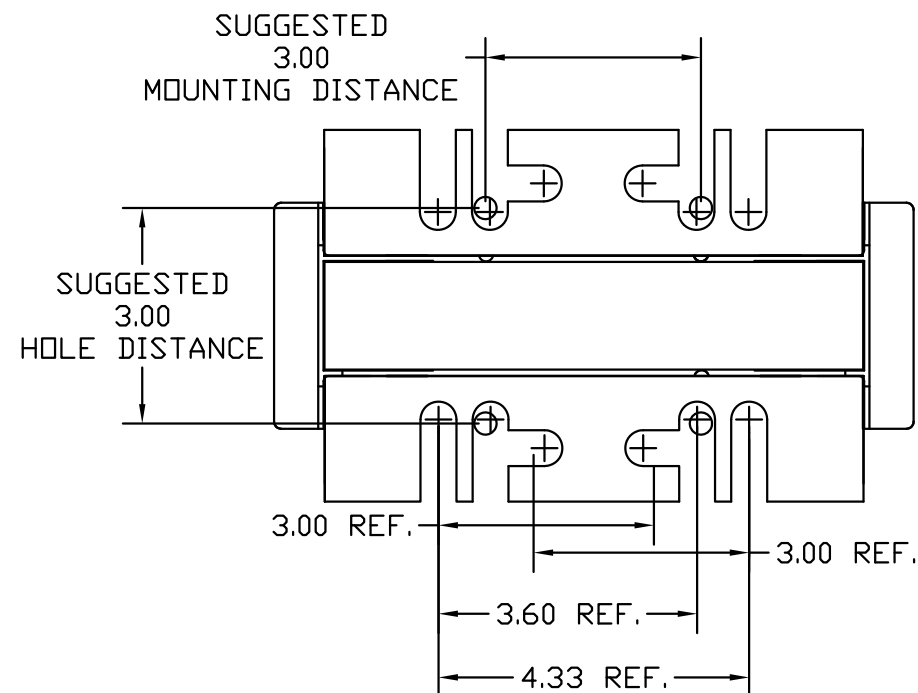
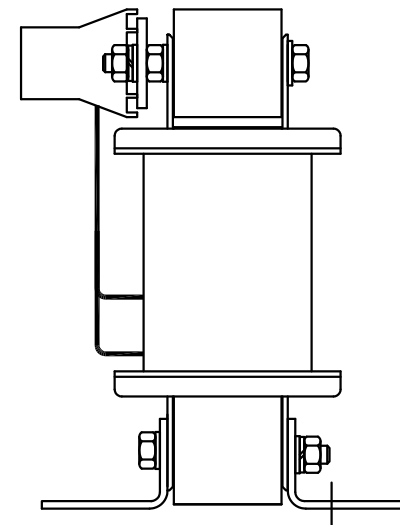
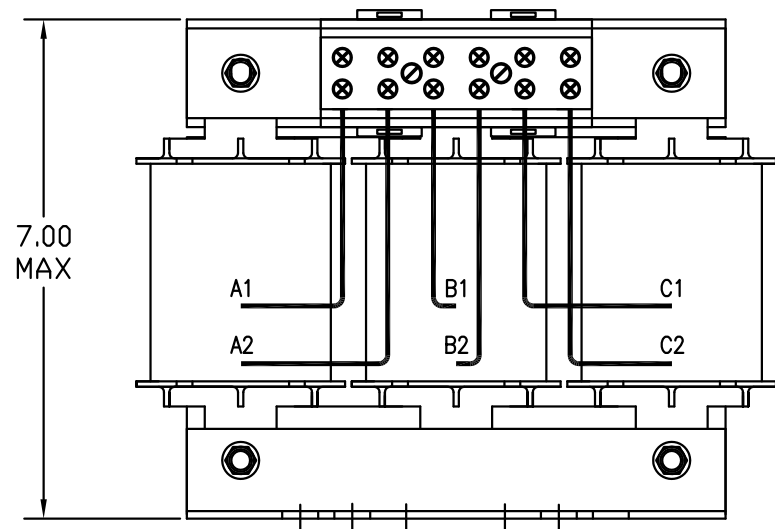
UL[®] US SA[®] CE

A1 A2 B1 B2 C1 C2



NOTE: A1, A2, B1, B2, C1, C2,
MARKINGS ON COIL AND TERMINAL BLOCK
FOR REFERENCE ONLY.

TORQUE(LB-IN)=CUSTOMER WIRE
35=1 AWG THRU 4 AWG
30=6 AWG THRU 14 AWG
25=16 AWG THRU 20 AWG
20= 22 AWG



TCI, LLC CLAIMS PROPRIETARY RIGHTS IN THE MATERIAL HEREIN DISCLOSED. IT IS SUPPLIED WITHOUT PREJUDICE TO ANY PATENT RIGHTS OF TCI AND MAY NOT BE REPRODUCED OR USED TO MANUFACTURE ANYTHING SHOWN THEREIN WITHOUT WRITTEN PERMISSION FROM TCI.

NO	REVISION	DATE	BY
----	----------	------	----

TOLERANCES (EXCEPT AS NOTED)
DECIMAL
.XX ±.03
.XXX±.01
FRACTIONAL
± 1/32
ANGULAR
± 1/2°

TCI[®] W132 N10611 Grant Drive
Germantown, WI 53022

KDRF31T, INPUT REACTOR
11kW, 400V, 24AMPS

DRN. BY DSW DATE 3/18/11 DWG. NO. 104645DG
SCALE TO FIT SIZE B SHT.1 OF 1