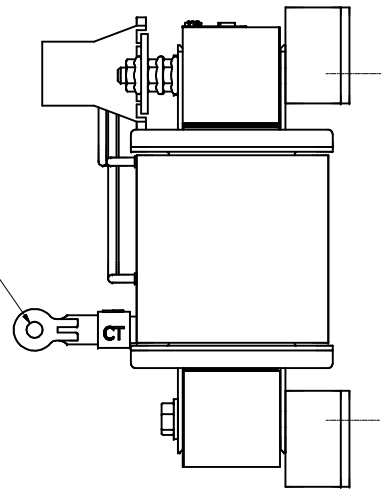
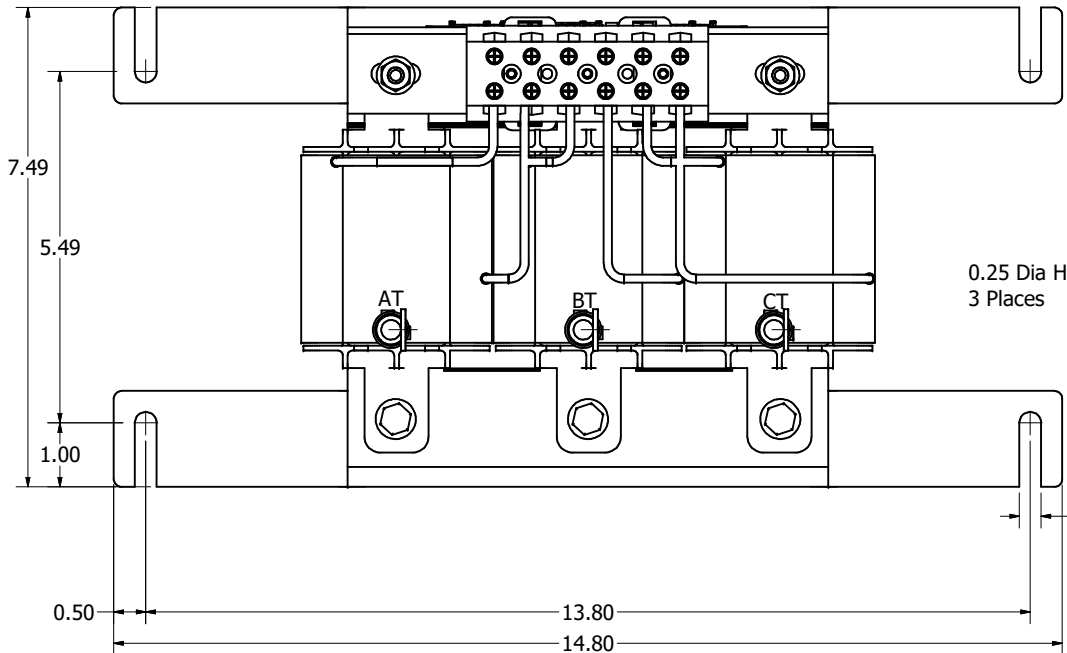
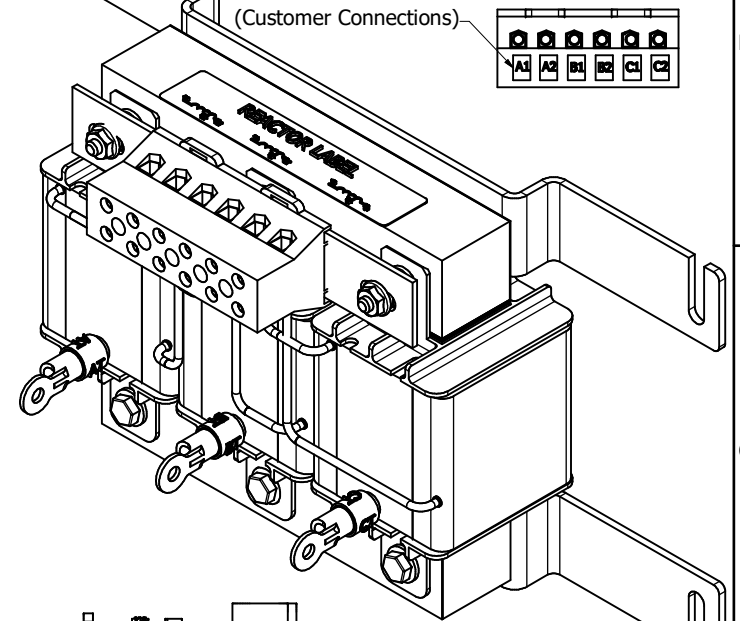
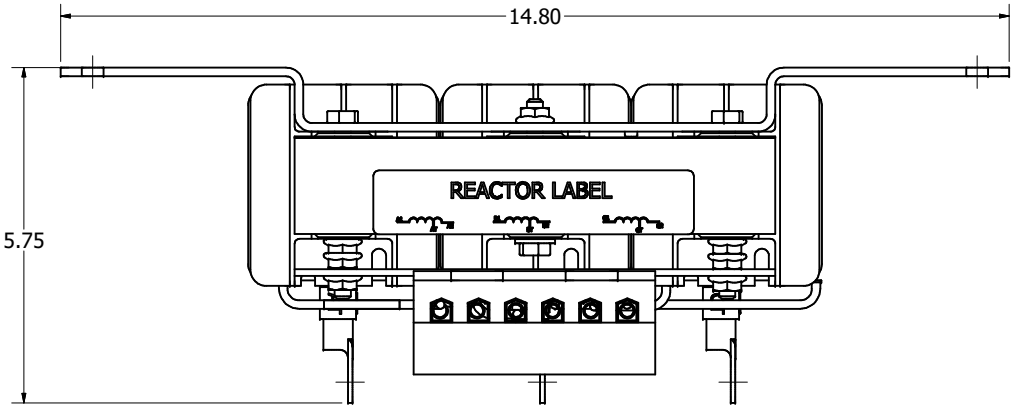



Horsepower (HP)	TCI Part Number	Rated Amps (A)	Max Amps (A)	Weight (LBS)
20	KDRF2TTX1	19.3	27	30

Wire Range: 1- 4 AWG. Torque : 35 IN-LBS (3.95 Nm)  
 6- 14 AWG. Torque : 30 IN-LBS (3.39 Nm)  
 16- 20 AWG. Torque : 25 IN-LBS (2.28 Nm)  
 22 AWG. Torque : 20 IN-LBS (2.26 Nm)



Customer Is Responsible For Installation to Meet All National And Local Electrical Codes.

Material(s) Shall be RoHS Compliant

THE INFORMATION AND DESIGNS CONTAINED IN THIS DRAWING ARE CONFIDENTIAL AND THE PROPRIETARY PROPERTY OF ALLIED MOTION TECHNOLOGIES INC. AND ITS SUBSIDIARIES. NEITHER THIS DESIGN NOR ANY INFORMATION CONTAINED IN THIS DRAWING MAY BE REPRODUCED OR DISCLOSED TO OTHERS WITHOUT THE EXPRESS WRITTEN CONSENT OF ALLIED MOTION TECHNOLOGIES INC. AND ITS SUBSIDIARIES.					TOLERANCES (EXCEPT AS NOTED)	 W182N10611 (Rev 13 Feb 2023) Germantown, WI 53022 © 2023 TCI, LLC An Allied Motion Company KDRF2TTX1, Wall Mounted, 20HP, 3 Phase, 5th Tuning Inductor.
					DECIMAL	
					.XX ± .25 .XXX ± .10	
	B	6233, Double Nut Brace	5/8/2023	DSW	FRACTIONAL	
A	AS DESIGNED	5/31/19	DSW	ANGULAR	± 1/32	
NO	REVISION	DATE	BY		± 1°	

DRN BY: DSW DATE: 5/31/19  
 SCALE: 1/2 DRAWN BY: DSW  
 108168DG  
 SHEET 1 OF 1