

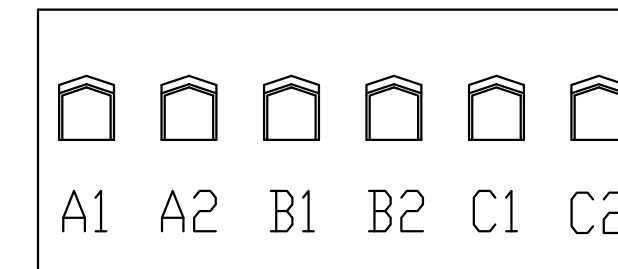
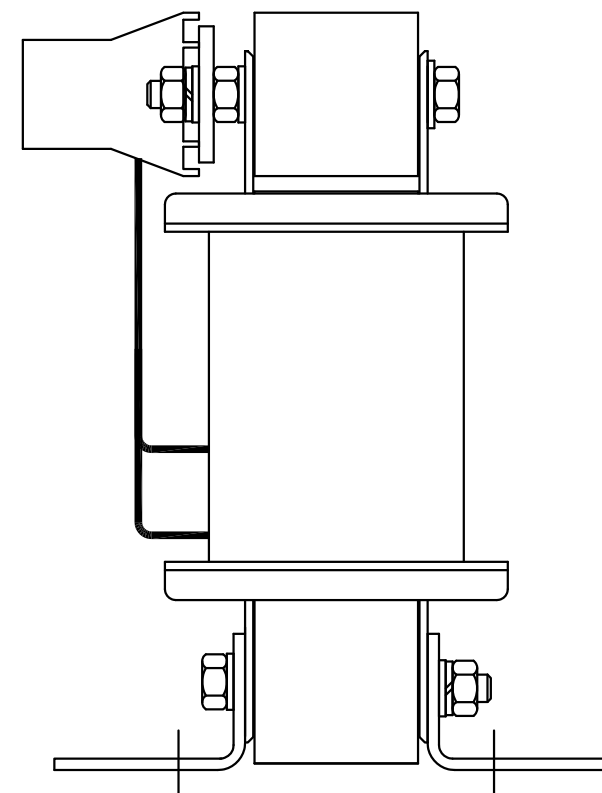
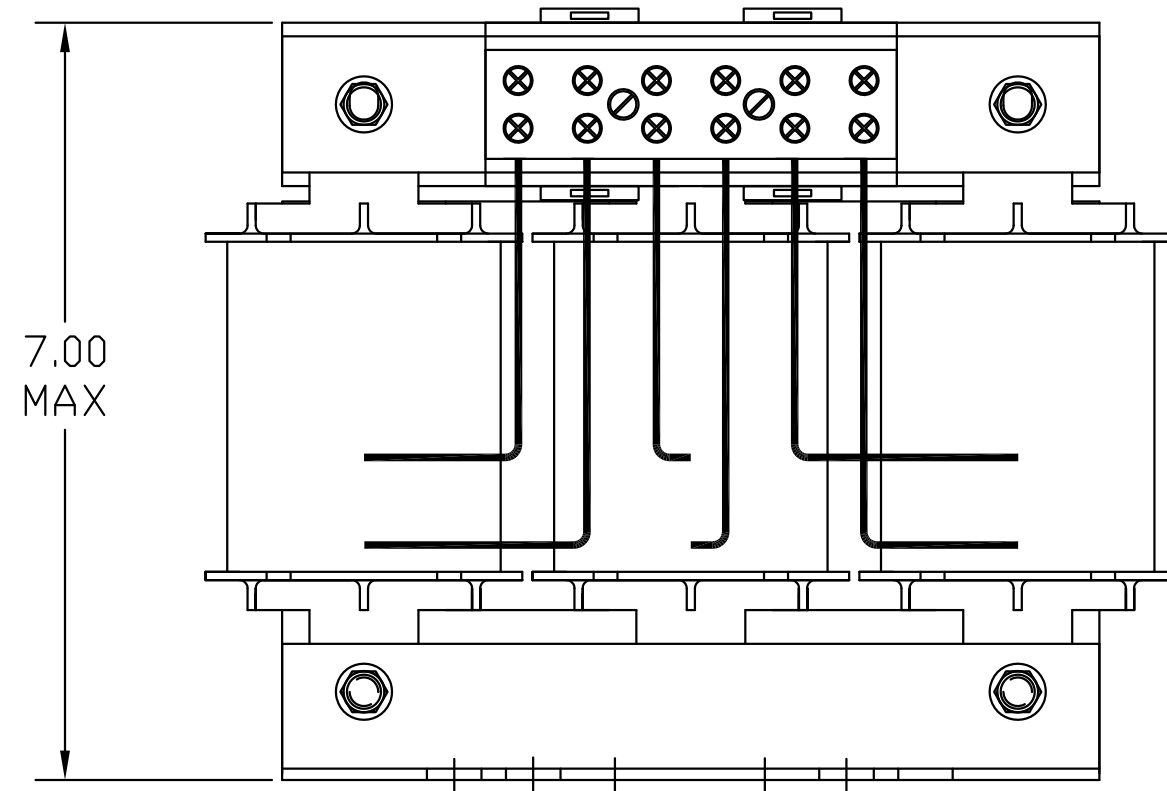
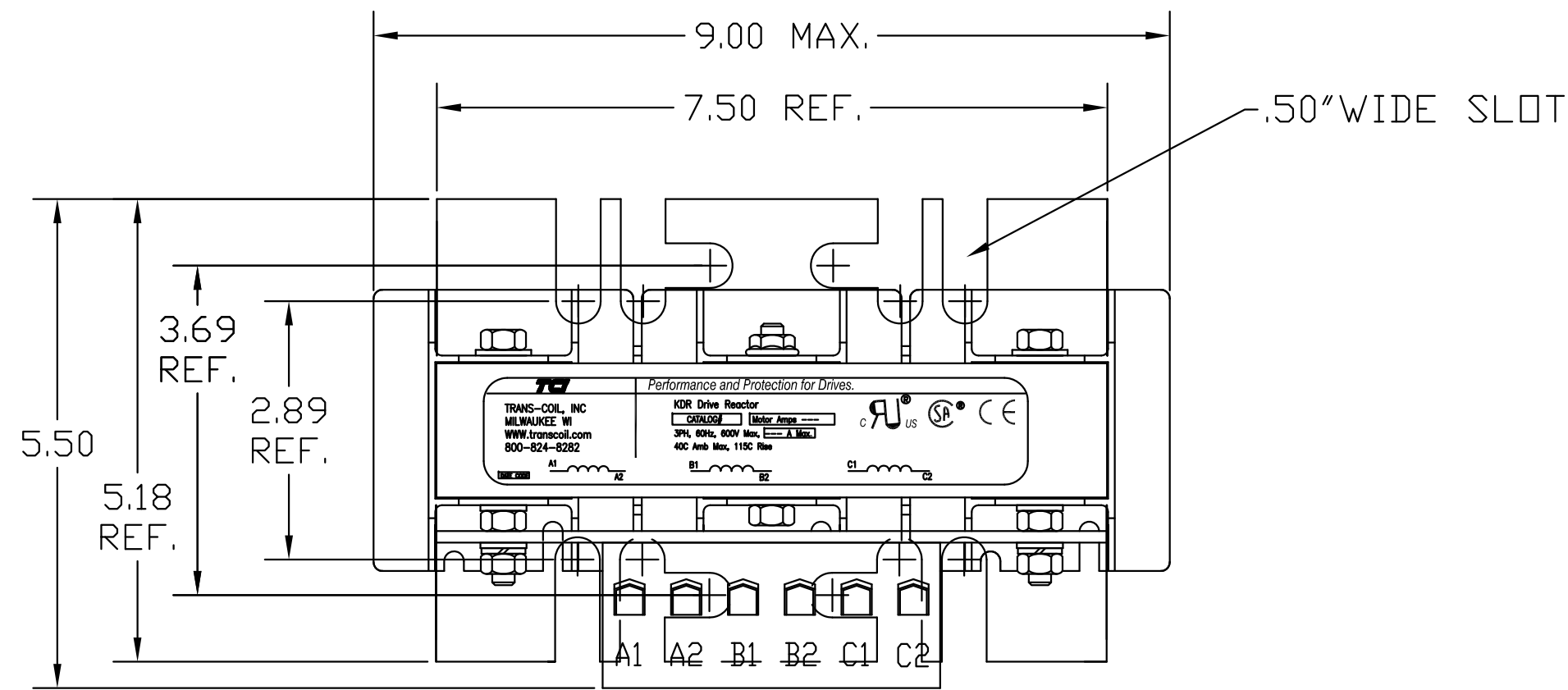
HP	CATALOG NO	--mH ±20%	--AMPS(A)	APPROX WT-LBS
20	KDRF2T	2.72	27	26

**TCI**  
 TRANS-COIL, INC  
 MILWAUKEE WI  
 WWW.transcoil.com  
 800-824-8282

*Performance and Protection for Drives.*

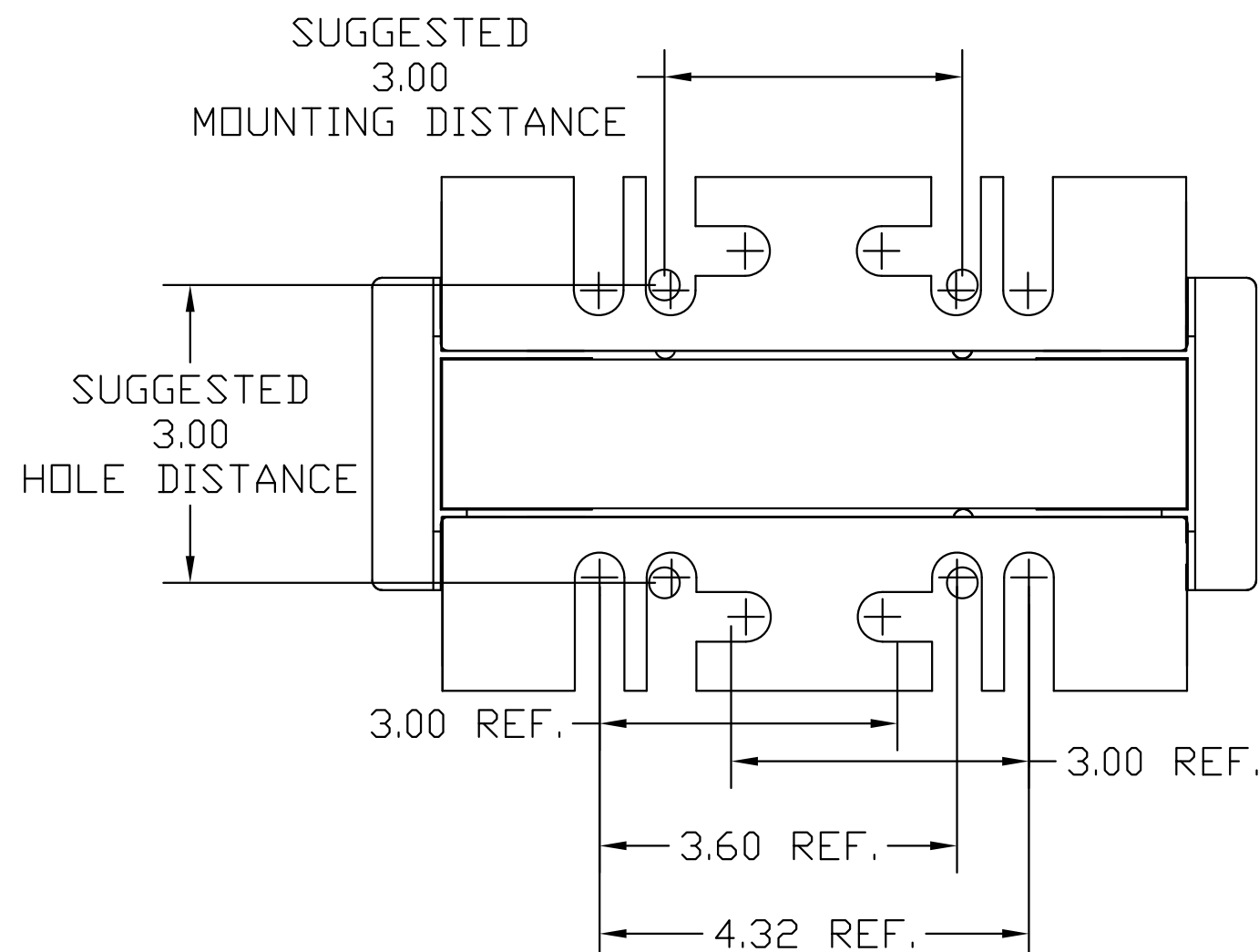
KDR Drive Reactor  
 CATALOG#  Motor Amps   
 3PH, 60Hz, 600V Max,  A Max.  
 40C Amb Max, 115C Rise

DATE: 6/08



NOTE: A1, A2, B1, B2, C1, C2,  
 ON TERMINAL BLOCK  
 FOR REFERENCE ONLY.

TORQUE(LB-IN)=CUSTOMER WIRE  
 35=1 AWG THRU 4 AWG  
 30=6 AWG THRU 14 AWG  
 25=16 AWG THRU 20 AWG  
 20=22 AWG



TCI, LLC CLAIMS  
 PROPRIETARY RIGHTS IN  
 THE MATERIAL HEREIN  
 DISCLOSED. IT IS  
 SUPPLIED WITHOUT  
 PREJUDICE TO ANY  
 PATENT RIGHTS OF TCI  
 AND MAY NOT BE  
 REPRODUCED OR USED  
 TO MANUFACTURE  
 ANYTHING SHOWN  
 THEREIN WITHOUT  
 WRITTEN PERMISSION  
 FROM TCI.

NO	REVISION	DATE	BY	TOLERANCES (EXCEPT AS NOTED)
				DECIMAL
				.XX ±.03
				.XXX ±.01
				FRACTIONAL
				± 1/32
				ANGULAR
				± 1/2°

**TCI**® W132 N10611 Grant Drive  
 Germantown, WI 53022

KDRF2T, 20HP  
 480 VOLTS, 27 AMPS

DRN. BY DSW DATE 1/27/05 DWG. NO. 102421DG  
 SCALE TO FIT SIZE C SHT.1 OF 1