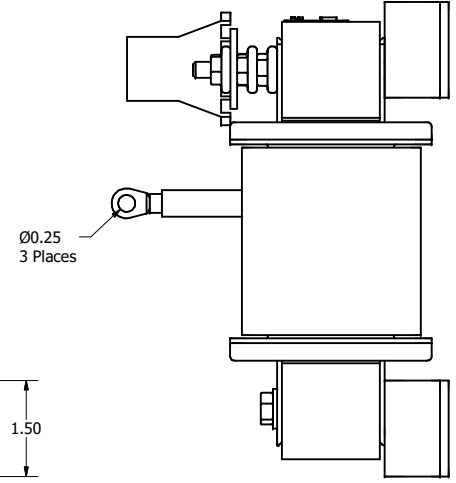
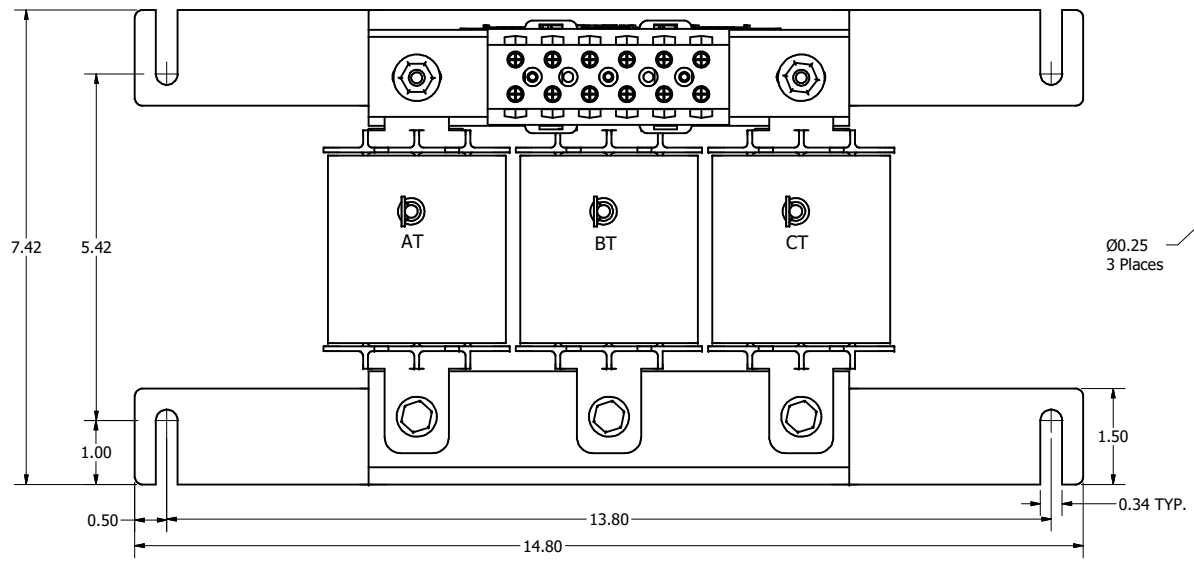
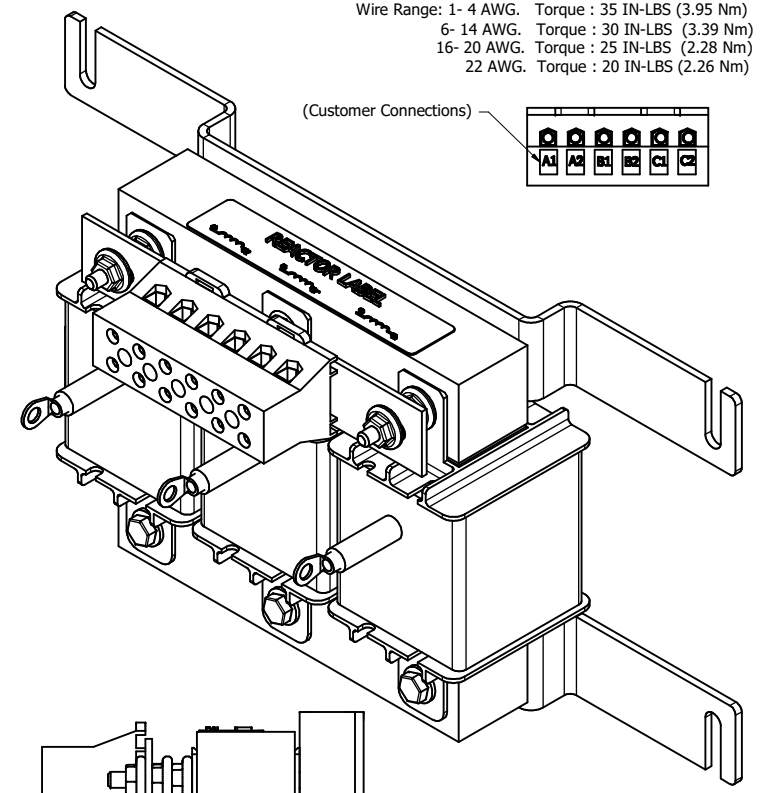
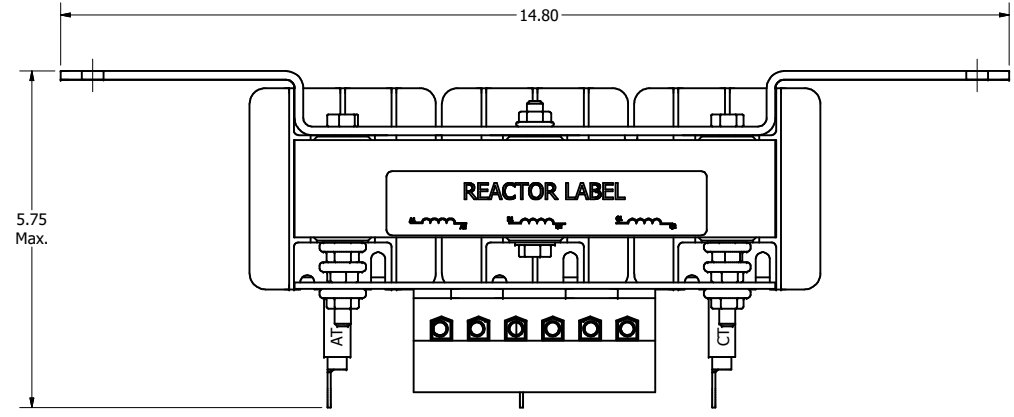
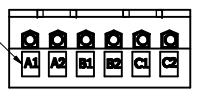



TCI Part Number	Horsepower (HP)	Amps	Weight (LBS)
KDRF1TTX3	15	14.5	28

Wire Range: 1- 4 AWG. Torque : 35 IN-LBS (3.95 Nm)
 6- 14 AWG. Torque : 30 IN-LBS (3.39 Nm)
 16- 20 AWG. Torque : 25 IN-LBS (2.28 Nm)
 22 AWG. Torque : 20 IN-LBS (2.26 Nm)



Customer Is Responsible For Installation to Meet All National And Local Electrical Codes. Material(s) Shall be RoHS Compliant

THE INFORMATION AND DESIGNS CONTAINED IN THIS DRAWING ARE CONFIDENTIAL AND THE PROPRIETARY PROPERTY OF ALLIED MOTION TECHNOLOGIES INC. AND ITS SUBSIDIARIES. NEITHER THIS DESIGN NOR ANY INFORMATION CONTAINED IN THIS DRAWING MAY BE REPRODUCED OR DISCLOSED TO OTHERS WITHOUT THE EXPRESS WRITTEN CONSENT OF ALLIED MOTION TECHNOLOGIES INC. AND ITS SUBSIDIARIES.				TOLERANCES (EXCEPT AS NOTED)	 W132N10611 (Rev 13 Feb 2023) Germantown, WI 53022 © 2023 TCI, LLC	
				DECIMAL		
	C	6233, Add Double Nut	4/10/2023	DSW	.XX ± .25 .XXX ± .10	An Official Motion Company KDRF1TTX3, Wall Mounted, 15HP, 3 Phase, 5th Tuning Inductor.
	B	4956 DEPTH UPDATED	11/13/19	JRN	FRACTIONAL	
	A	AS DESIGNED	04/10/19	JRN	± 1/32	
NO	REVISION	DATE	BY	ANGULAR ± 1°	DWS BY JRN DATE 04/10/19 108084DG SCALE: 1/2 DRAWN: JRN	