

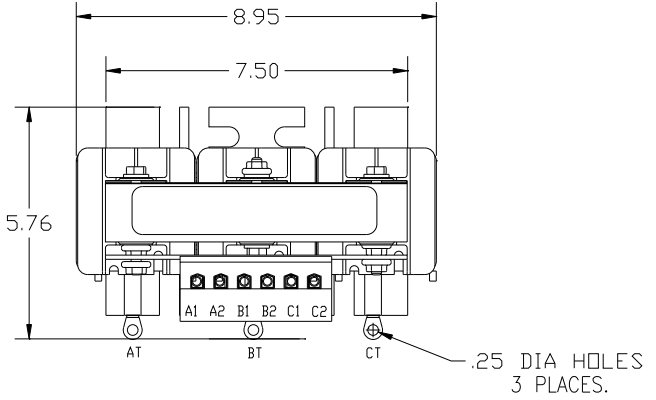
HP	CATALOG NO	__AMPS(A)	APPROX WT-LBS
15	KDRF1TT	21	26

TCI Performance and Protection for Drives.

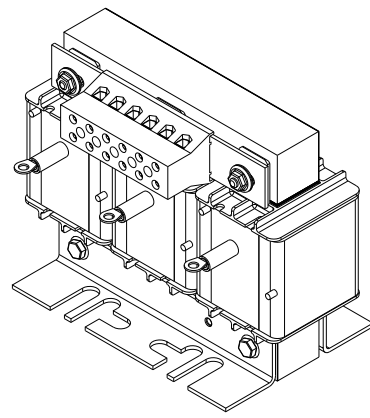
TRANS-COIL, INC.
MILWAUKEE WI
WWW.TRANS-COIL.COM
800-824-8282

KDR Drive Reactor
[KDR1521] Motor Amps [---] Max.
21A 400V 400V Max. [---] 5.0kVA
40C Amb. Max. 115C Rise

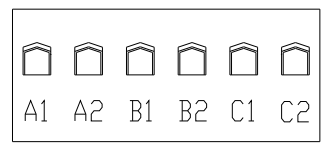
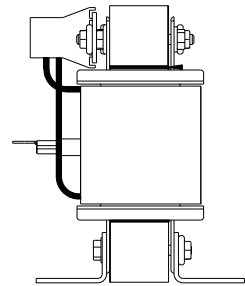
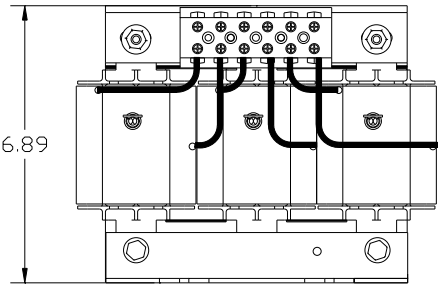
UL® IEC® CE



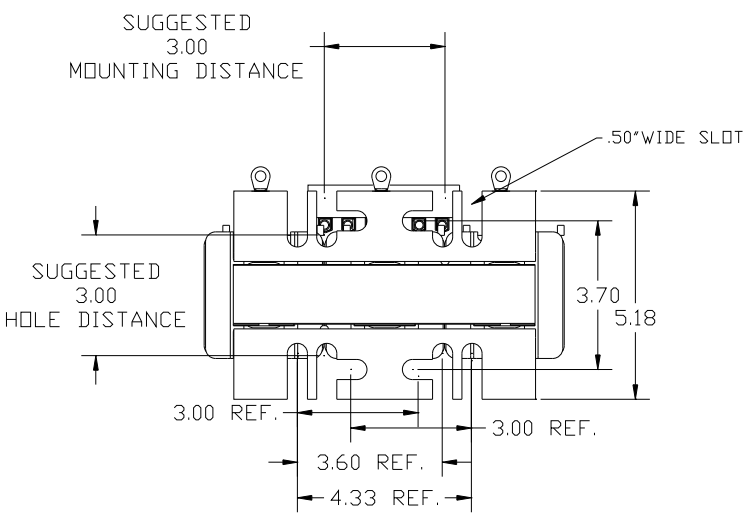
FRONT OF REACTOR
MARKINGS ON BLOCK FOR REF.
A1 AT A2 B1 BT B2 C1 CT



NOTE: A1, AT A2, B1, BT, B2, C1, CT C2,
TERMINAL BLOCK AND COIL
FOR REFERENCE ONLY.



TORQUE(LB-IN)=CUSTOMER WIRE
35=1 AWG THRU 4 AWG
30=6 AWG THRU 14 AWG
25=16 AWG THRU 20 AWG
20=22 AWG



				TOLERANCES (EXCEPT AS NOTED)		TCI 7878 N. 86th STREET MILWAUKEE, WI 53224	
				DECIMAL			
				.XX ± .03		KDRF1TT, 15HP HGP FILTER REACTOR	
				.XXX ± .01			
				FRACTIONAL		DRN BY DSW DATE 7/5/2013 DWG NO. 105306DG	
				± 1/32		SCALE TO FIT	
				ANGULAR		APPRVD. C	
				± 1/2°		SHT. 1 of 1	
NO.	REVISION	DATE	BY				