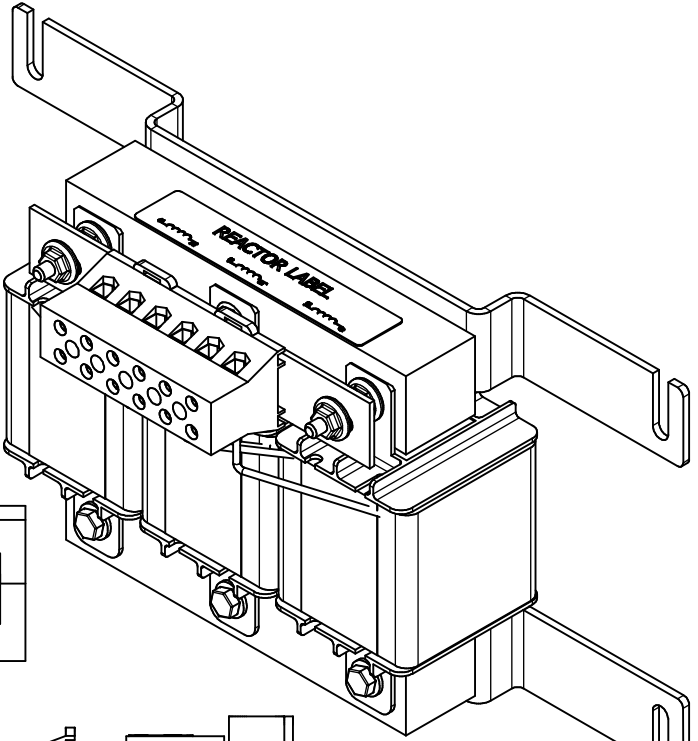
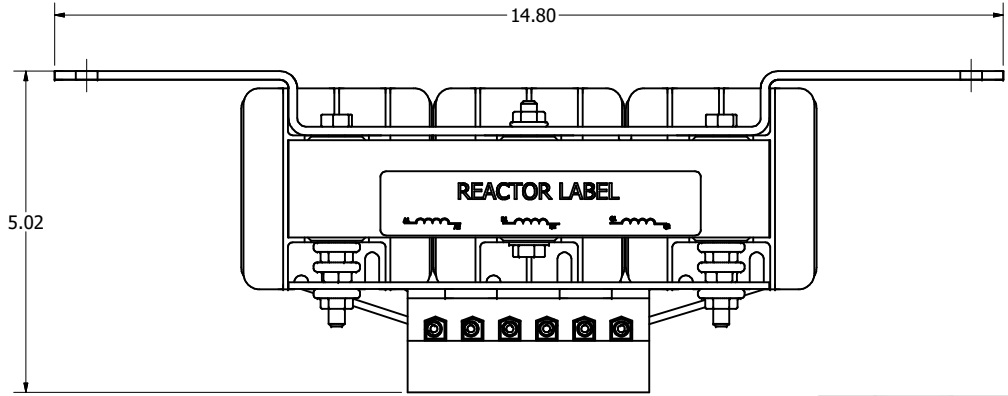
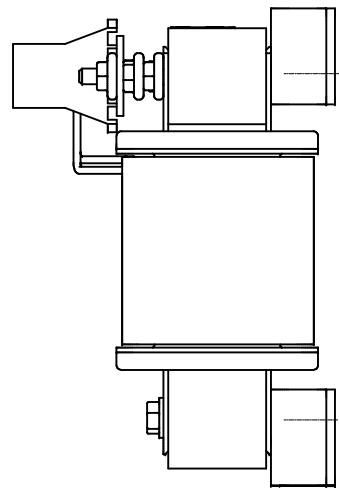
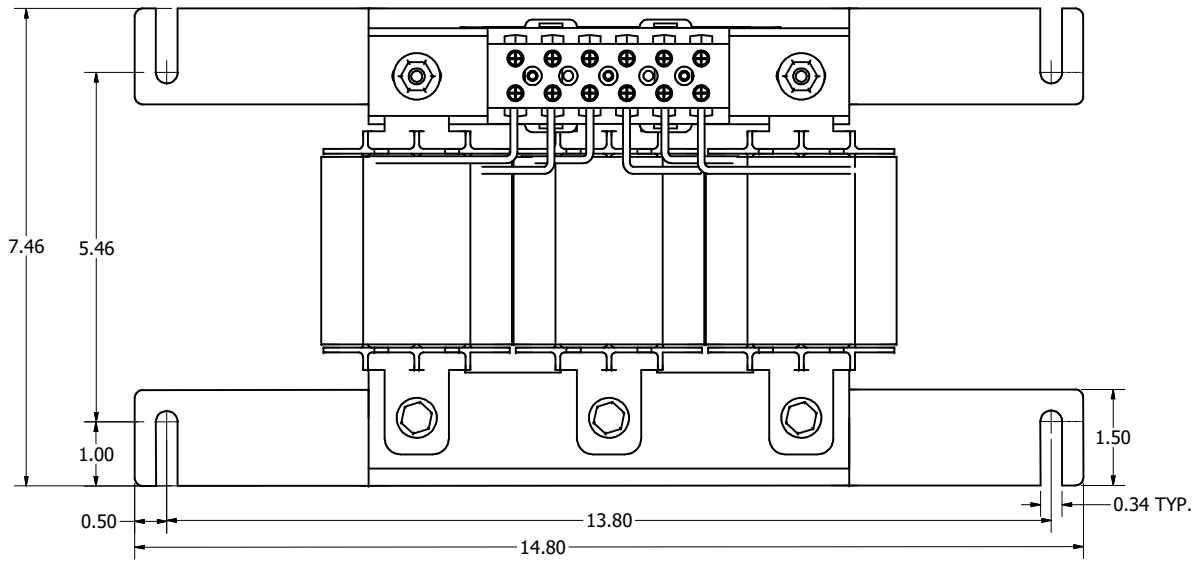
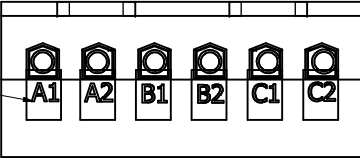


TCI Part Number	Horsepower (HP)	Motor Amps (A)	Maximum Amps (A)	Approx Weight (LBS)
KDRF1HX1	50	65	72	25



Wire Range: 1- 4 AWG. Torque : 35 IN-LBS (3.95 Nm)
 6- 14 AWG. Torque : 30 IN-LBS (3.39 Nm)
 16- 20 AWG. Torque : 25 IN-LBS (2.28 Nm)
 22 AWG. Torque : 20 IN-LBS (2.26 Nm)

(Customer Connections)
 Markings On Terminal Block
 For Reference Only.



Customer Is Responsible For Installation to Meet All National And Local Electrical Codes.

Material(s) Shall be RoHS Compliant A

THE INFORMATION AND DESIGNS CONTAINED IN THIS DRAWING ARE CONFIDENTIAL AND THE PROPRIETARY PROPERTY OF ALLIED MOTION TECHNOLOGIES INC. AND ITS SUBSIDIARIES. NEITHER THIS DESIGN NOR ANY INFORMATION CONTAINED IN THIS DRAWING MAY BE REPRODUCED OR DISCLOSED TO OTHERS WITHOUT THE EXPRESS WRITTEN CONSENT OF ALLIED MOTION TECHNOLOGIES INC. AND ITS SUBSIDIARIES.

NO	REVISION	DATE	BY
C	6688, 85 to 72 Max Amps	6/10/2024	DSW
B	6233, Double Nut Brace	5/18/2023	DSW
A	AS DESIGNED	9/17/18	DSW

TOLERANCES (EXCEPT AS NOTED)	
DECIMAL	.XX ± .25 .XXX ± .10
FRACTIONAL	± 1/32
ANGULAR	± 1°

TCI W132N10611 (Rev 19) 50
 Germantown, WI 53022
 © 2023 TCI, LLC
 An Official Motors Company
 KDR, Wall Mounted, 480V, 50HP, 72A
 3 Phase, Input Line Inductor, High Impedance
 DWN BY: DSW DATE: 9/17/18 FILE: 107871DG
 SCALE: 1/2 DRAWN: HSE SHEET 1 OF 1