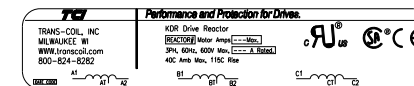
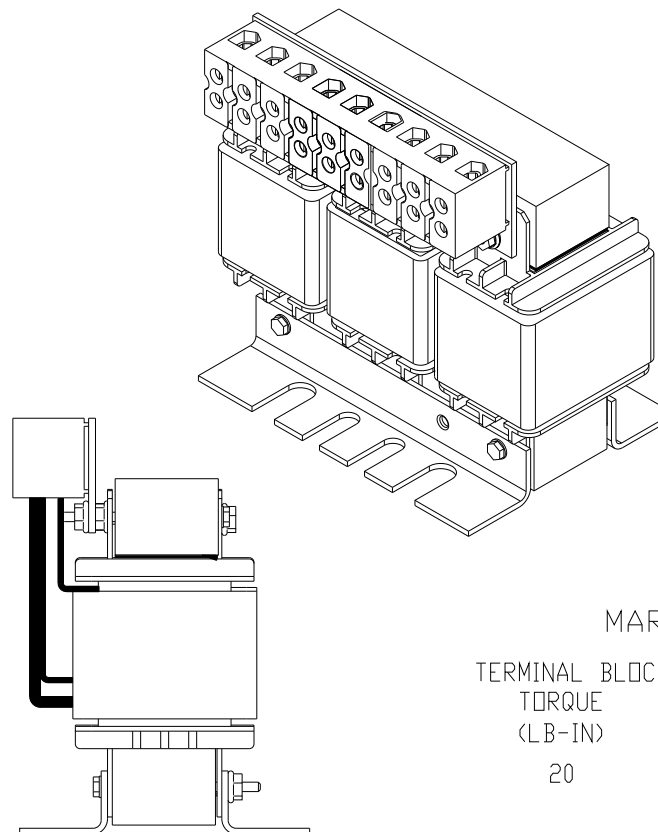
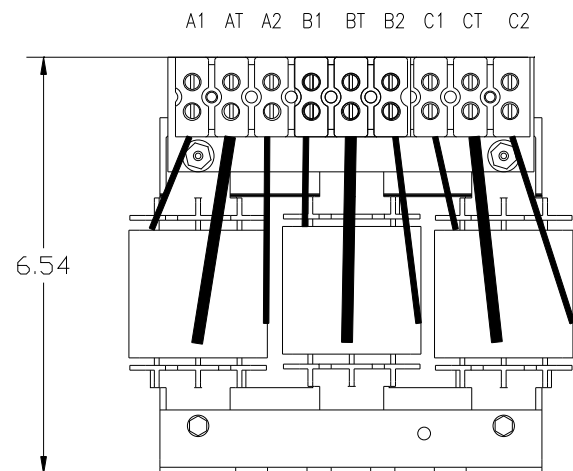
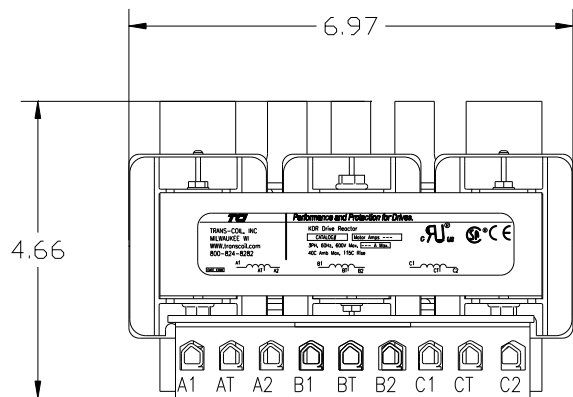


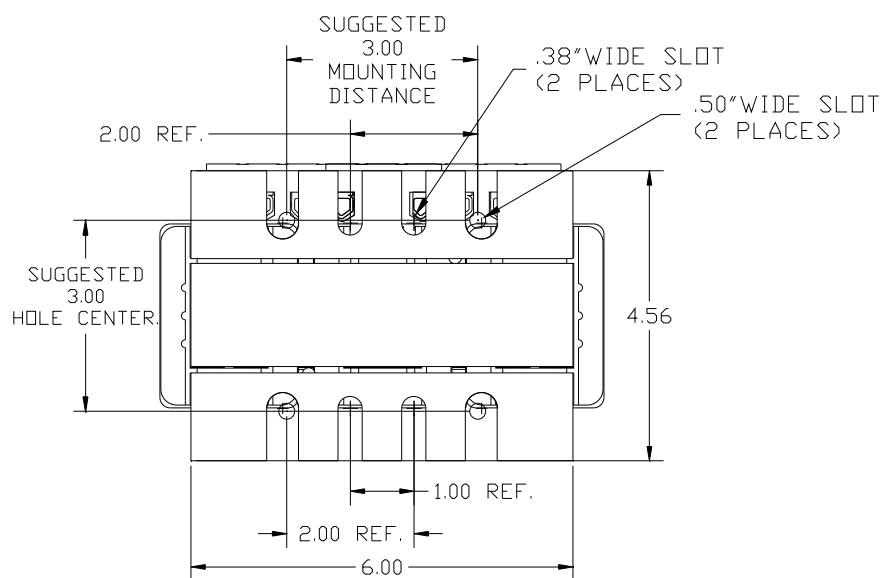
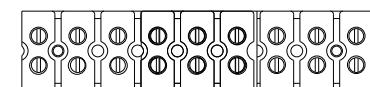
HP	CATALOG NO	__AMPS(A)	APPROX WT-LBS
7.5	KDRE2TT	11	18



MARKINGS ON BLOCK FOR REF.

TERMINAL BLOCK TORQUE (LB-IN)  
20

A1 AT A2 B1 BT B2 C1 CT C2



				TOLERANCES (EXCEPT AS NOTED)		TCL 7878 N. 86th STREET MILWAUKEE, WI 53224	
				DECIMAL		KDRE2TT, 7.5HP HGP FILTER REACTOR	
				XX ± .03		DRN BY DSW DATE 4/2/2013 DWG NO 105320DG	
				XXX ± .01		SCALE TO FIT	
				FRACTIONAL ± 1/32		C 105320DG SHT. 1 of 1	
				ANGULAR ± 1/2°			
B	2936	CHG BLOCK MOUNTING	7/8/13	DSW			
A	2929	TAP WAS AT 70	7/26/13	DSW			
NO	REVISION		DATE	BY			