

HP	CATALOG NO	--mH ±20%	--AMPS(A)	APPROX WT-LBS	TERMINAL BLOCK TORQUE (LB-IN)
10	KDRE1T	5.25	14	18	20

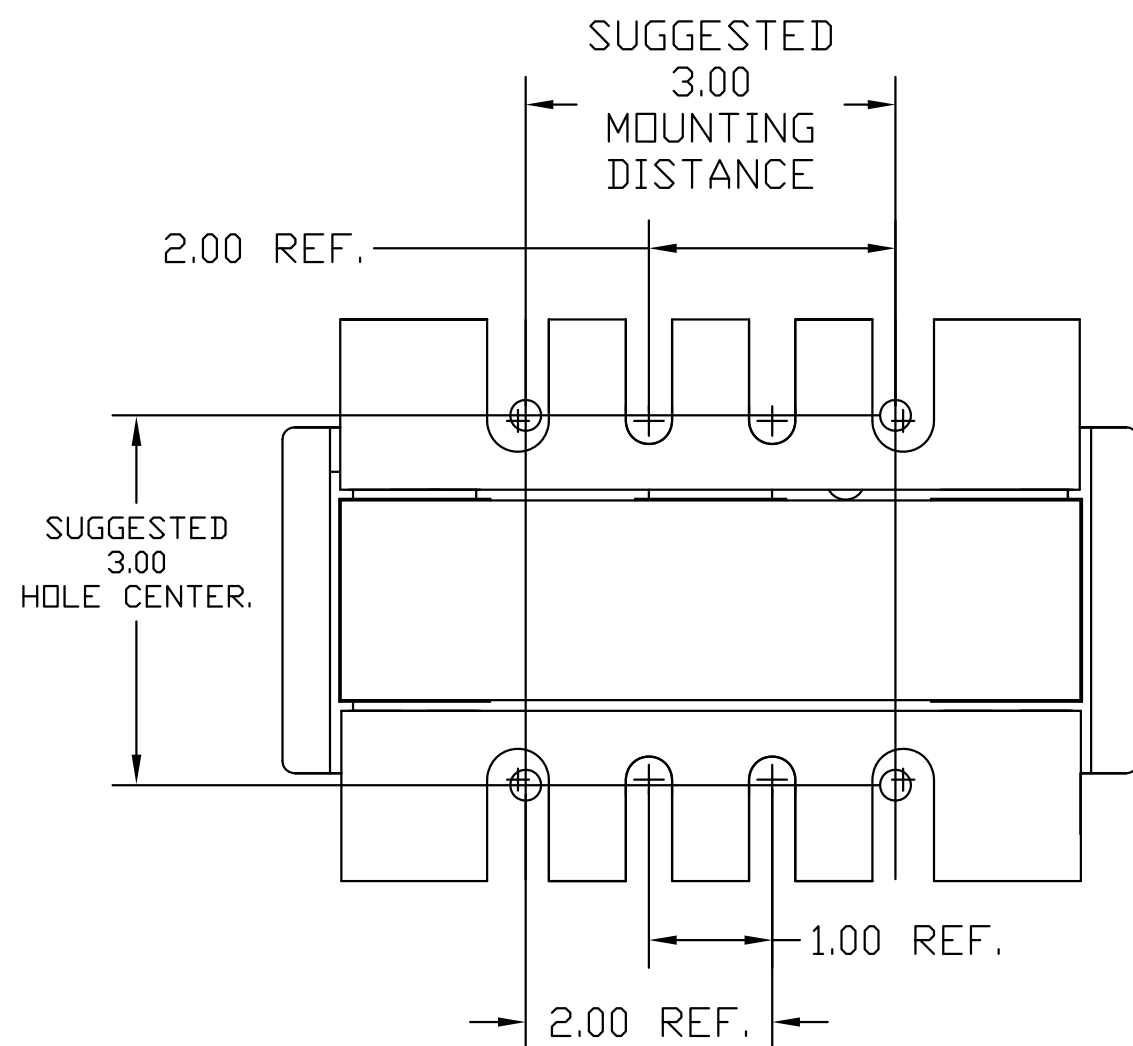
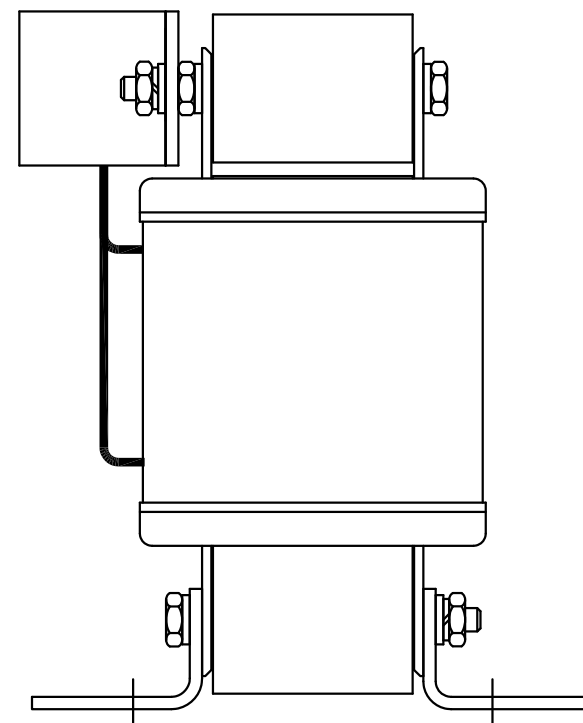
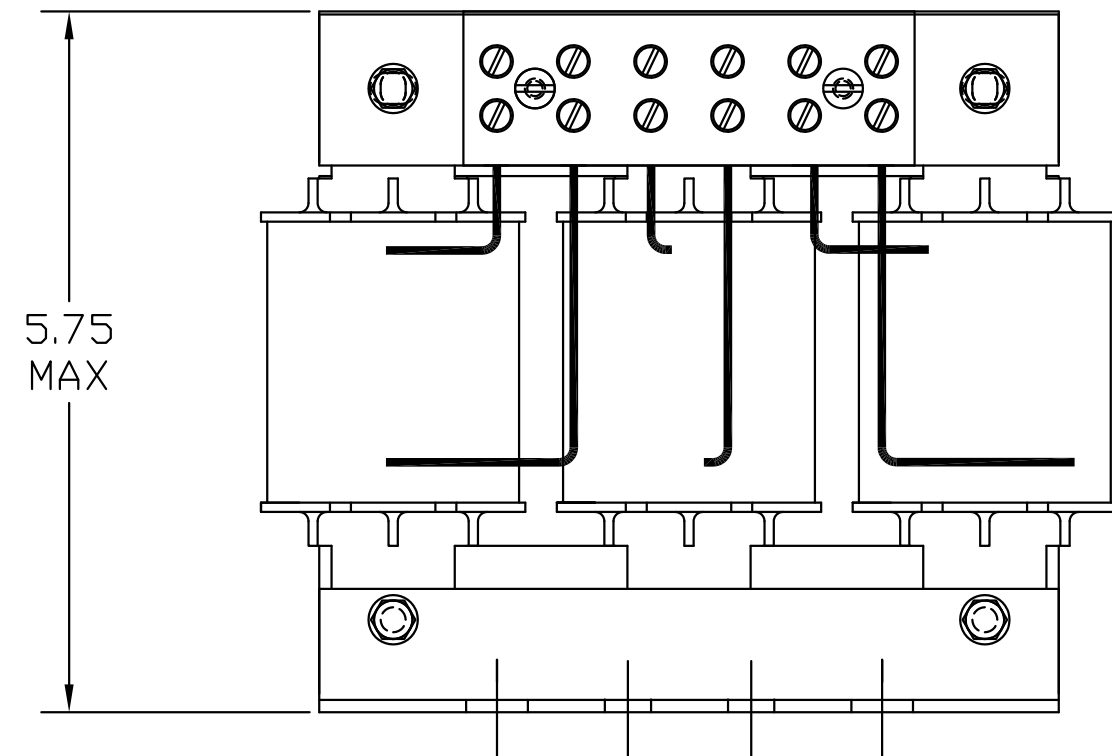
**TCI** Performance and Protection for Drives.

TRANS-COIL, INC  
MILWAUKEE WI  
WWW.transcoil.com  
800-824-8282

KDR Drive Reactor  
CATALOG# [ ] Motor Amps [ ]  
3PH, 60Hz, 600V Max, [ ] A Max.  
40C Amb Max, 115C Rise

UL<sup>®</sup> US SA<sup>®</sup> CE

DATE CODE A1 A2 B1 B2 C1 C2



TCI, LLC CLAIMS PROPRIETARY RIGHTS IN THE MATERIAL HEREIN DISCLOSED. IT IS SUPPLIED WITHOUT PREJUDICE TO ANY PATENT RIGHTS OF TCI AND MAY NOT BE REPRODUCED OR USED TO MANUFACTURE ANYTHING SHOWN THEREIN WITHOUT WRITTEN PERMISSION FROM TCI.

NO	REVISION	DATE	BY

TOLERANCES (EXCEPT AS NOTED)
DECIMAL
.XX ±.03
.XXX ±.01
FRACTIONAL
± 1/32
ANGULAR
± 1/2°

**TCI** W132 N10611 Grant Drive  
Germantown, WI 53022

**KDRE1T, 10HP**  
**480 VOLTS, 14 AMPS**

DRN. BY DSW DATE 1/21/05 DWG. NO. 102419DG  
SCALE TO FIT SIZE C SHT. 1 OF 1