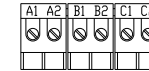


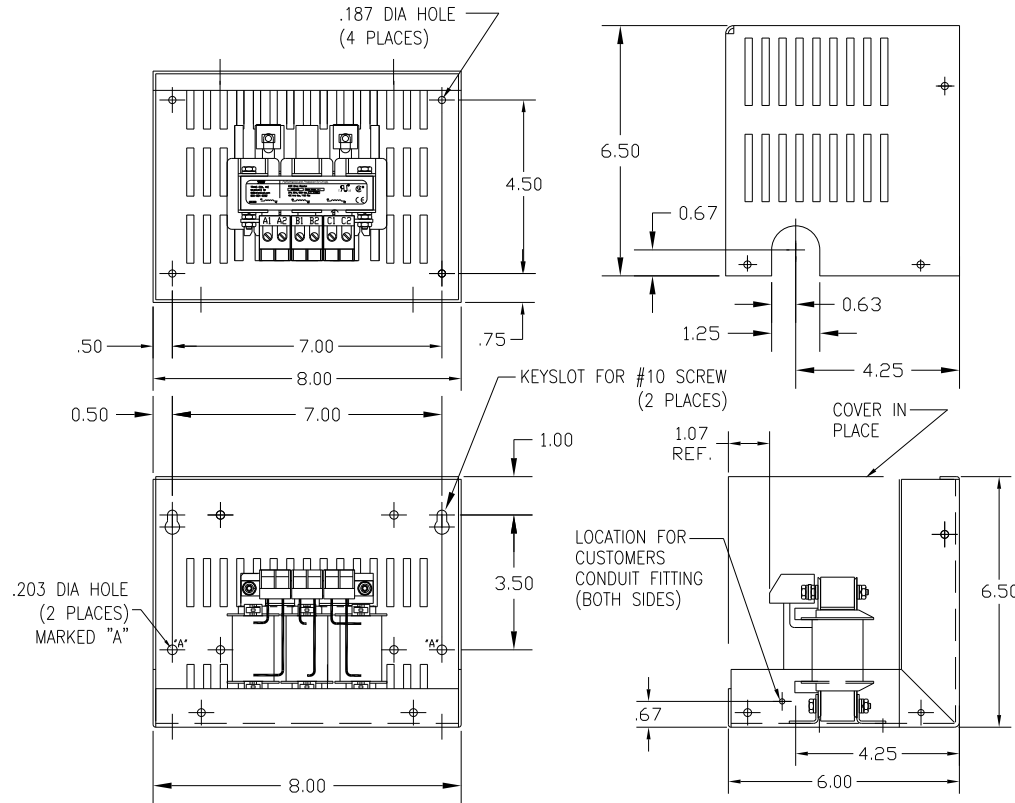
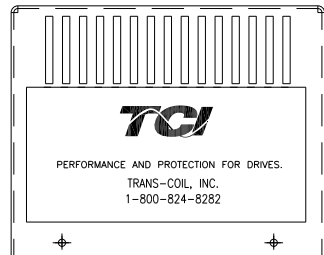
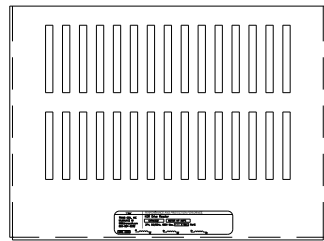
| CATALOG NO | VOLTAGE | NEC MOTOR HP | NEC MOTOR CURRENT | WATTS LOSS | APPROX WT-LBS | TORQUE (LB-IN) |
|------------|---------|--------------|-------------------|------------|---------------|----------------|
| KDRA55HC1 | 575/600 | 0.5 | .90 | 9 | 8 | 10 |

NOTE: NEC MOTOR CURRENT SHOWN ARE BASED ON HORSEPOWER AT 575 VOLTS.

| | |
|---|-------------------------|
| BLOCK WIRE RANGE FOR REACTOR AND TIGHTENING TORQUE. | #12-#18 AWG 10 LB-IN |
|---|-------------------------|



NOTE: A1, A2, B1, B2, C1, C2, MARKINGS ON TERMINAL BLOCK FOR REFERENCE ONLY.



CUSTOMER IS RESPONSIBLE FOR INSTALLATION TO MEET ALL NATIONAL AND LOCAL ELECTRICAL CODES.

| | | | | | |
|----|----------|------|----|--|---|
| | | | | TOLERANCES (EXCEPT AS NOTED): DECIMAL .XX ± .03 .XXX ± .01 FRACTIONAL ± 1/32 ANGULAR ± 1/2° | 7878 N. 86th STREET MILWAUKEE, WI 53224 KDR DRIVE REACTOR 600V HIGH Z, FRAME A |
| NO | REVISION | DATE | BY | DRN. BY DSW DATE 1/25/12 SCALE APPRV. B DWG. NO. KDRA55HC1DG SHT. 1 OF 1 | |