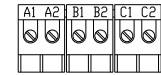
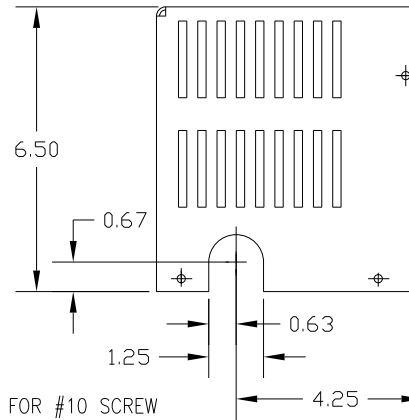
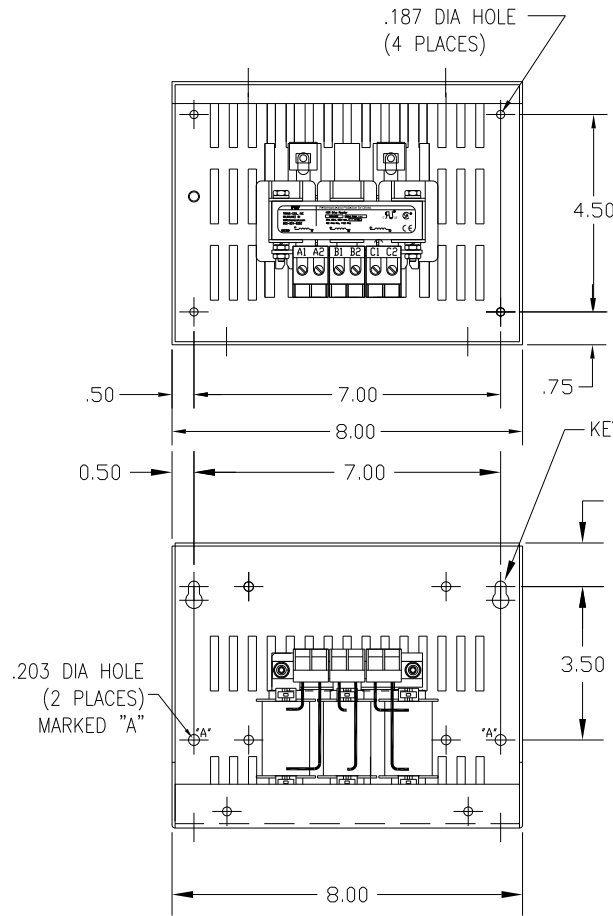
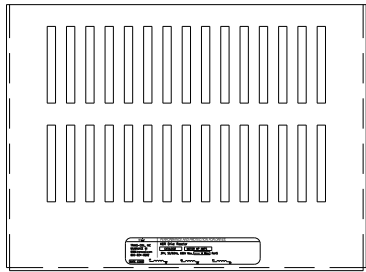
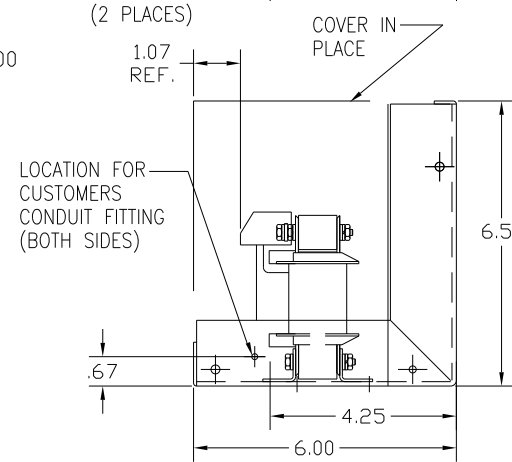


CATALOG NO	VOLTAGE	NEC MOTOR HP	NEC MOTOR CURRENT	WATTS LOSS	APPROX WT-LBS	TORQUE (LB-IN)
KDRA2LC1	480	3.0	4.8	23.0	8	10



NOTE: A1, A2, B1, B2, C1, C2, MARKINGS ON TERMINAL BLOCK FOR REFERENCE ONLY.

BLOCK WIRE RANGE #12-#18 AWG FOR REACTOR AND TIGHTENING TORQUE. 10 LB-IN



CUSTOMER IS RESPONSIBLE FOR INSTALLATION TO MEET ALL NATIONAL AND LOCAL ELECTRICAL CODES.

NO	REVISION	DATE	BY	TOLERANCES (EXCEPT AS NOTED)	DECIMAL	XX ± .03	.XXX ± .01	FRACTIONAL ± 1/32	ANGULAR ± 1/2°

TCI		7878 N. 86th STREET MILWAUKEE, WI 53224	
KDR DRIVE REACTOR 480V LOW Z, FRAME A			
DRN BY	DSW	DATE	1/25/12
SCALE		APPRVD	
DWG NO		B	
KDR A2LC1DG		SHT. 1 OF 1	