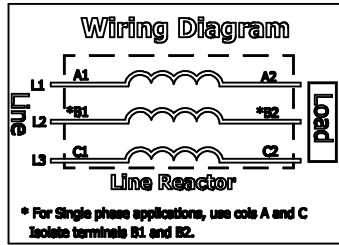


0.44 Dia Mounting Holes
4 Places.

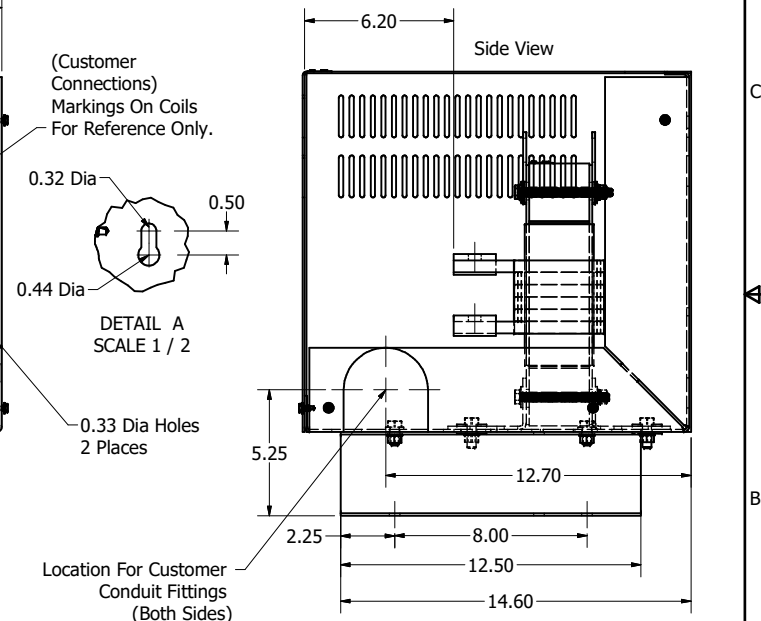


480 Rated Voltage, 600 Max Voltage, High Z, Impedance.


Part Number	Horsepower (HP)	Motor Amps (A)	Maximum Amps (A)	Inductance (uH)	Weight (LBS)	Losses (W)	Terminal Hole Size (Inches)
KDRL1HC5	250	302	310	106	160	548	0.56
KDRL4HC5	400	477	480	65	160	730	0.56

480 Rated Voltage, 600 Max Voltage, Low Z, Impedance.

Part Number	Horsepower (HP)	Motor Amps (A)	Maximum Amps (A)	Inductance (uH)	Weight (LBS)	Losses (W)	Terminal Hole Size (Inches)
KDRL1LC5	450	515	610	36.3	160	509	0.53
KDRL2LC5	500	590	610	31.5	160	518	0.53



- Notes:
1. Material(s) Shall be RoHS Compliant
 2. Customer Is Responsible For Installation To Meet All National And Local Electrical Codes.

THE INFORMATION AND DESIGNS CONTAINED IN THIS DRAWING ARE CONFIDENTIAL AND THE PROPRIETARY PROPERTY OF ALLIED MOTION TECHNOLOGIES INC. AND ITS SUBSIDIARIES. NEITHER THIS DESIGN NOR ANY INFORMATION CONTAINED IN THIS DRAWING MAY BE REPRODUCED OR DISCLOSED TO OTHERS WITHOUT THE EXPRESS WRITTEN CONSENT OF ALLIED MOTION TECHNOLOGIES INC. AND ITS SUBSIDIARIES.				TOLERANCES (EXCEPT AS NOTED) DECIMAL .XX ± .25 .XXX ± .10 FRACTIONAL ± 1/32 ANGULAR ± 1°		 W182N10611 (Rev 1) Rev 6 Germantown, WI 53022 © 2024 TCI, LLC An Allied Motion Company KDR L Frame Enclosed C5	
B	6688 Update KDRL1L 610A to 575A	5/30/2024	DSW	DATE		DATE	DATE
A	2235 Reactor Mounting chg.	9/15/2003	DSW	DATE		DATE	DATE
NO	REVISION	DATE	BY	DATE		DATE	DATE

4

3

2

1

4

3

2

1