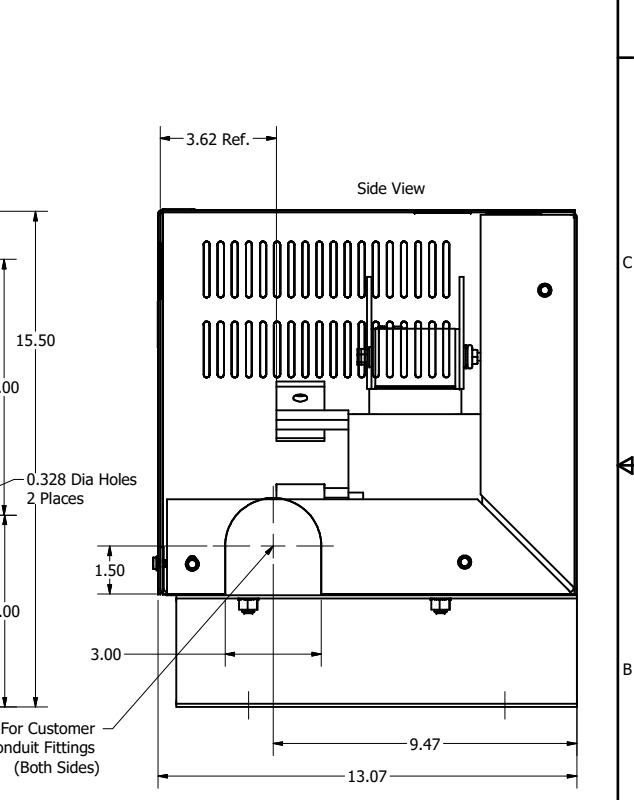


480 Rated Voltage, 600 Max Voltage, Low Z, Impedance.						
Part Number	Horsepower (HP)	Motor Amps (A)	Maximum Amps (A)	Inductance (uH)	Weight (LBS)	Terminal Hole Size (Inches)
KDRG3LC4	200	240	240	83.9	100	0.44

480 Rated Voltage, 600 Max Voltage, Output						
Part Number	Horsepower (HP)	Motor Amps (A)	Maximum Amps (A)	Inductance (uH)	Weight (LBS)	Terminal Hole Size (Inches)
KDRG1PC4	200	240	250	41.3	95	0.44

575 Rated Voltage, 600 Max Voltage, Output						
Part Number	Horsepower (HP)	Motor Amps (A)	Maximum Amps (A)	Inductance (uH)	Weight (LBS)	Terminal Hole Size (Inches)
KDRG31PC4	250	242	250	44	95	0.44



- Notes:
1. Material(s) Shall be RoHS Compliant
 2. Customer Is Responsible For Installation To Meet All National And Local Electrical Codes.

TCI, LLC CLAIMS PROPRIETARY RIGHTS IN THE MATERIAL HEREIN DISCLOSED. IT IS SUPPLIED WITHOUT PREJUDICE TO ANY PATENT RIGHTS OF TCI AND MAY NOT BE REPRODUCED OR USED TO MANUFACTURE ANYTHING SHOWN THEREIN WITHOUT WRITTEN PERMISSION FROM TCI.				TOLERANCES (EXCEPT AS NOTED)		W132 N10611 Grant Drive Germantown, WI 53022 KDR, 480V, 200HP, 250HP, 3 Phase, NEMA 1 Input/Output Line Inductor LIL Recognized	
					DECIMAL	.XX ± .25	DRN BY
					FRACTIONAL	.XXX ± .10	DATE
A	5270, Update Drawing Was KDR-14				ANGULAR	± 1/16	5/19/2020
A	Update Terminals On Inductor	5/19/2020	DSW		SCALE:	± 1°	DRN BY
NO	REVISION	DATE	BY		SCALE:	± 1°	DATE
					SCALE:	± 1°	DATE