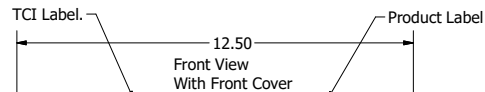
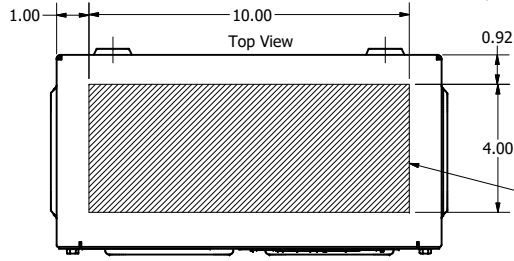
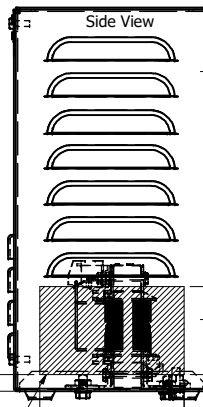
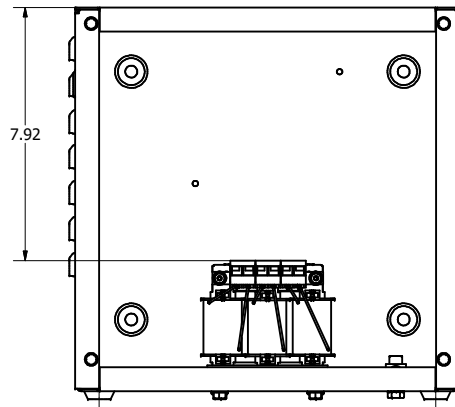


SECTION A-A  
SCALE 1 / 3

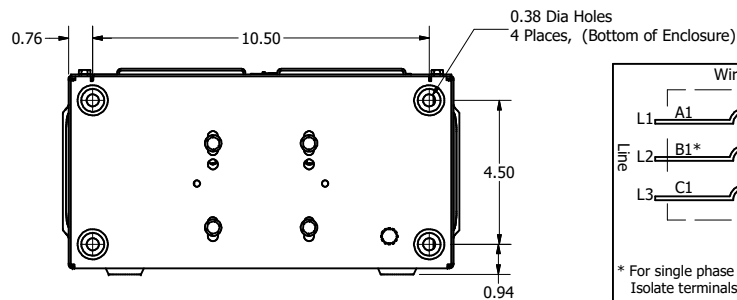
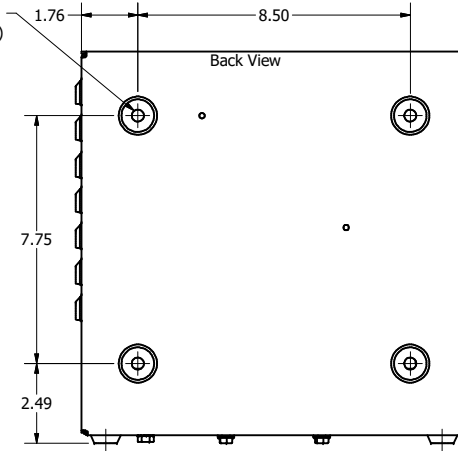
Wire Range: 18-12 AWG.  
Torque : 10 IN-LBS (1.1 Nm)



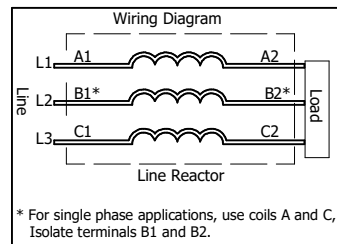
Front View  
Without Front Cover



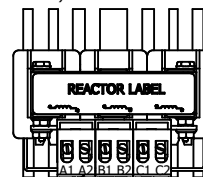
0.38 Dia Holes  
4 Places, (Back of Enclosure)



Bottom View



Markings On  
Terminal Block For  
Reference Only.



575 Rated Voltage, 600 Max Voltage, High Z, Impedance.

Part Number	Horsepower (HP)	Motor Amps (A)	Maximum Amps (A)	Inductance (uH)	Weight (LBS)	Losses (W)
KDRULA55HE01	1/2	0.9	1.5	51900	14.4	8
KDRULA52HE01	3/4	1.3	1.6	37100	14.4	13
KDRULA50HE01	1	1.7	2.1	29400	14.4	17
KDRULA51HE01	1 1/2	2.4	2.8	20600	14.4	26
KDRULA43HE01	2	2.7	3.2	17900	14.4	23
KDRULA44HE01	3	3.9	5	12000	14.4	34
KDRULA45HE01	5	6.1	7.5	7580	14.4	47

480 Rated Voltage, 600 Max Voltage, Output

Part Number	Horsepower (HP)	Motor Amps (A)	Maximum Amps (A)	Inductance (uH)	Weight (LBS)	Losses (W)
KDRULA1PE01	2	3.4	4	3190	14.4	9
KDRULA2PE01	3	4.8	6	1700	14.4	9
KDRULA3PE01	5	7.6	8	1410	14.4	14
KDRULA4PE01	7 1/2	11	12	863	15.4	20

575 Rated Voltage, 600 Max Voltage, Low Z, Impedance.

Part Number	Horsepower (HP)	Motor Amps (A)	Maximum Amps (A)	Inductance (uH)	Weight (LBS)	Losses (W)
KDRULA55LE01	1/2	0.9	1.5	30300	14.4	6
KDRULA56LE01	3/4	1.3	2.1	21200	14.4	9.3
KDRULA50LE01	1	1.7	2.1	15900	14.4	12
KDRULA51LE01	1 1/2	2.4	2.8	10200	14.4	19
KDRULA46LE01	2	2.7	3.3	9290	14.4	22
KDRULA52LE01	3	3.9	5	6740	14.4	23
KDRULA47LE01	5	6.1	7	4510	14.4	35
KDRULA48LE01	7 1/2	9	10.4	3100	14.4	43
KDRULA49LE01	10	11	11	2470	15.4	44

575 Rated Voltage, 600 Max Voltage, Output

Part Number	Horsepower (HP)	Motor Amps (A)	Maximum Amps (A)	Inductance (uH)	Weight (LBS)	Losses (W)
KDRULA31PE01	2	2.7	4	3370	14.4	9
KDRULA35PE01	3	3.9	4	3150	14.4	9
KDRULA33PE01	5	6.1	8	1430	14.4	14
KDRULA34PE01	7 1/2	9	12	991	15.4	20
KDRULA36PE01	10	11	12	936	15.4	20



Notes:

- UL file number: cULus Listed File E116124.
- KDR Drive Reactors Comply With The Thermal and Altitude Standards Set Forth by NEMA ST20-1992.
- KDR IOM Manual Part Number 30895
- Material(s) Shall be RoHS Compliant
- Customer Is Responsible For Installation To Meet All National And Local Electrical Codes.

TCI, LLC CLAIMS PROPRIETARY RIGHTS IN THE MATERIAL HEREIN DISCLOSED. IT IS SUPPLIED WITHOUT PREJUDICE TO ANY PATENT RIGHTS OF TCI AND MAY NOT BE REPRODUCED OR USED TO MANUFACTURE ANYTHING SHOWN THEREIN WITHOUT WRITTEN PERMISSION FROM TCI.

TOLERANCES (EXCEPT AS NOTED)			
	DECIMAL	.XX ± .25	.XXX ± .10
	FRACTIONAL	± 1/16	
	ANGULAR	± 1°	
A	NO	REVISION	DATE BY

**TCI** W132 N10611 Grant Drive  
Germanstown, WI 53022

KDR A Frame, Terminal Block, Enclosed  
Type 1, Reactor Drawing

DRN BY DATE 107541DG  
DSW 3/6/18  
SCALE: 1/3

SHT 4 OF 4