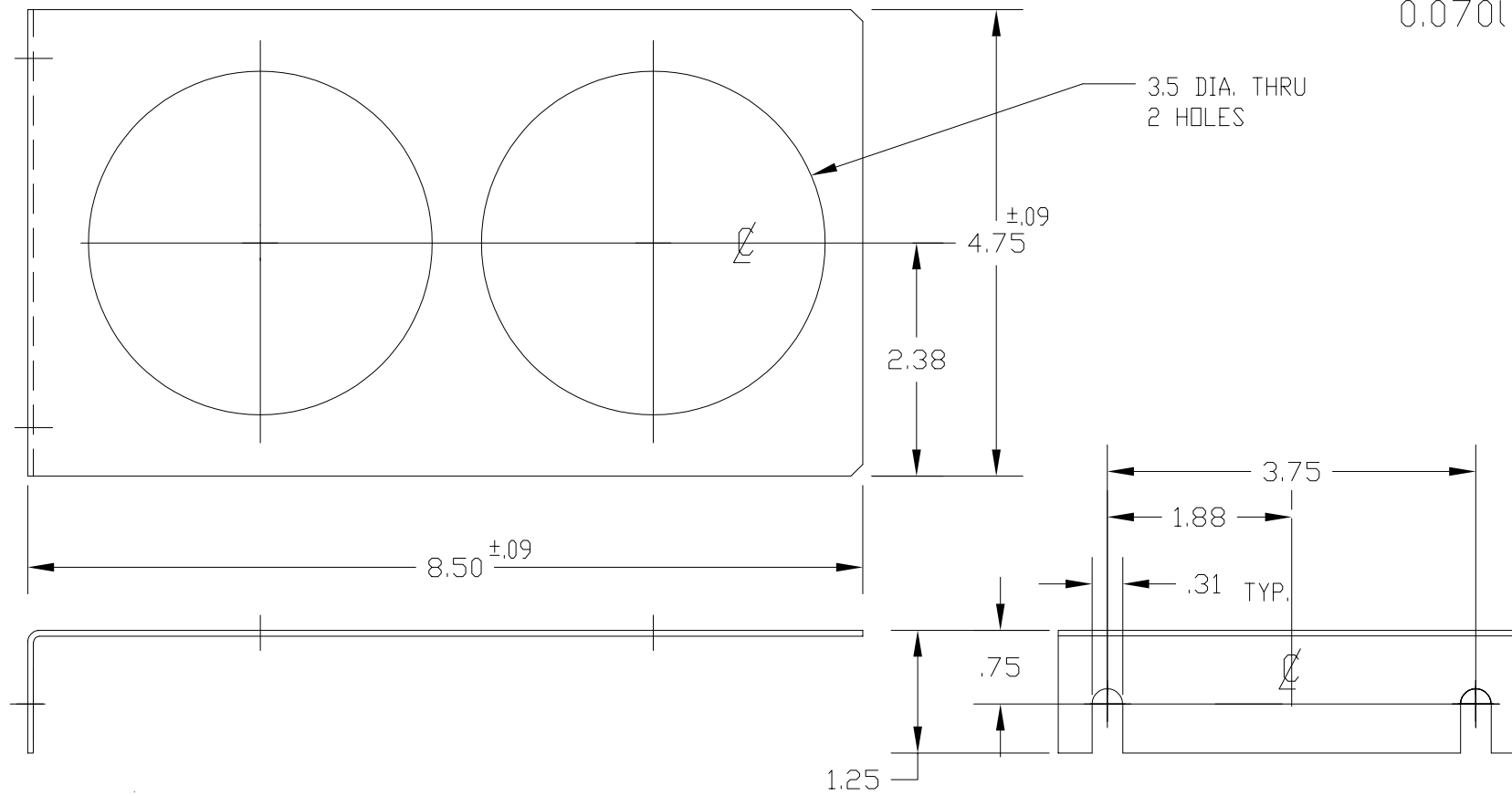


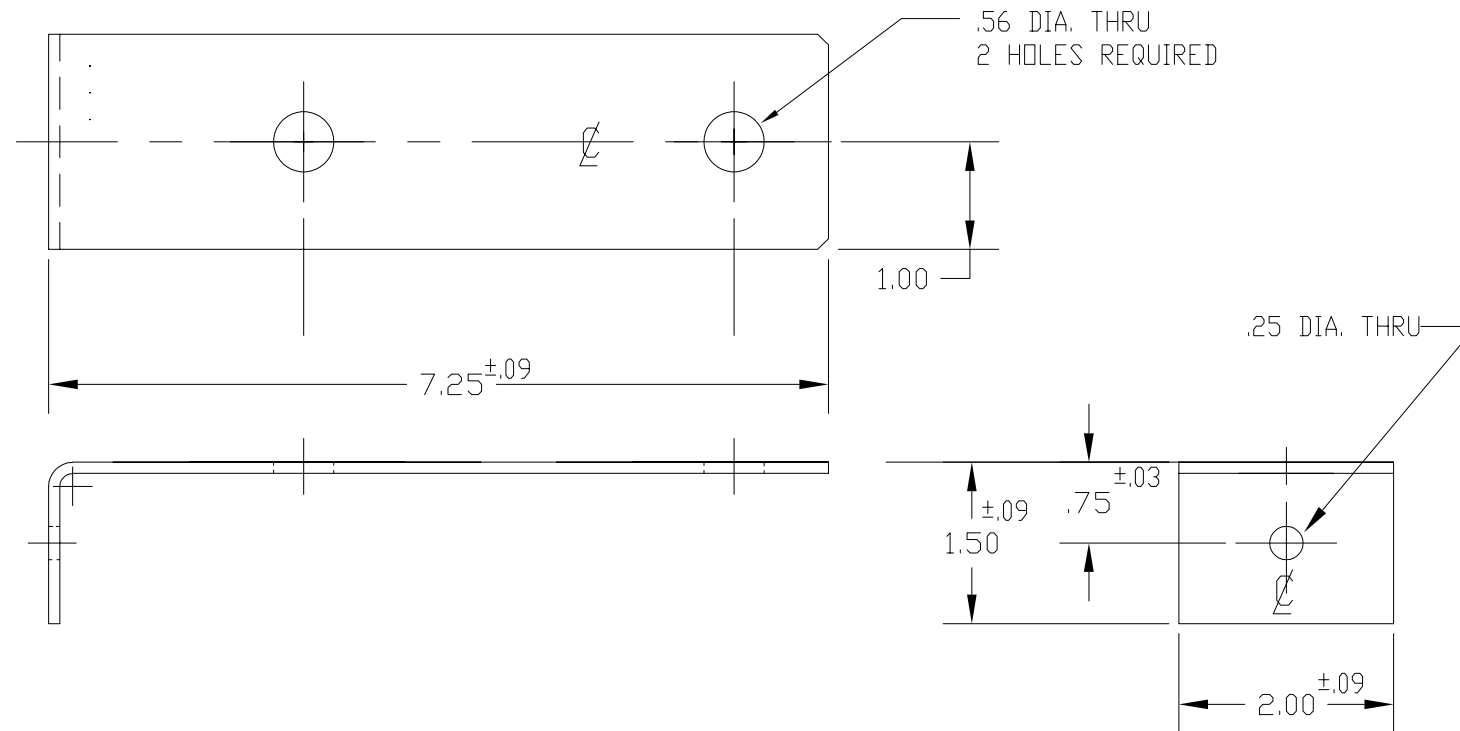
TCI PART# 16689

0.070lbs



TCI PART# 16690

0.075lbs



TCI PART# 16846  
Gray vinyl glazing channel

|   |    |          |      |    |   |   |
|---|----|----------|------|----|---|---|
| TCI, LLC CLAIMS<br>PROPRIETARY RIGHTS IN<br>THE MATERIAL HEREIN<br>DISCLOSED. IT IS<br>SUPPLIED WITHOUT<br>PREJUDICE TO ANY<br>PATENT RIGHTS OF TCI<br>AND MAY NOT BE<br>REPRODUCED OR USED<br>TO MANUFACTURE<br>ANYTHING SHOWN<br>THEREIN WITHOUT<br>WRITTEN PERMISSION<br>FROM TCI. |    |          |      |    | TOLERANCES<br>(EXCEPT AS NOTED):<br>DECIMAL<br>.XX ±.03<br>.XXX ±.01<br>FRACTIONAL<br>± 1/32<br>ANGULAR<br>± 1/2° | W132 N10611 Grant Drive<br>Germantown, WI 53022<br>High Endurance<br>2 Hole Brackets, Large Cap<br>DRN. BY DSW DATE 7/29/2013 DWG. NO. KCAPBKT2B<br>SCALE NONE APRVD. C SHT. 1 OF 1 |
|   | NO | REVISION | DATE | BY |   |   |
|   |    |          |      |    |   |   |
|   |    |          |      |    |   |   |
|   |    |          |      |    |   |   |