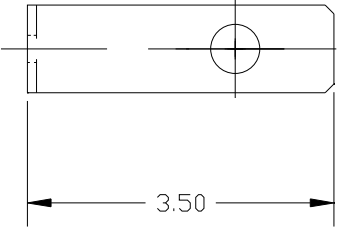
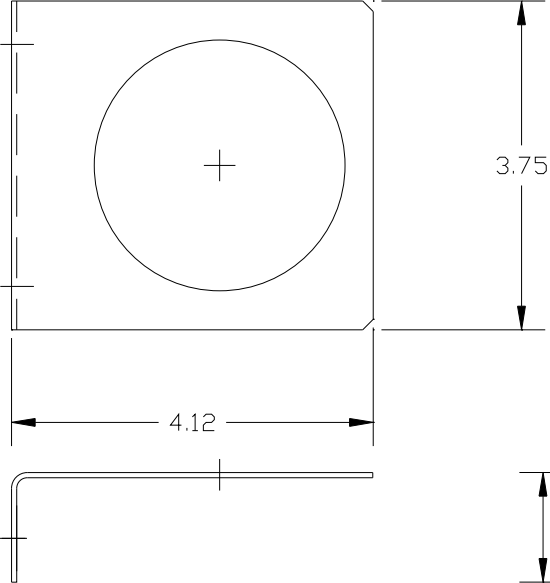
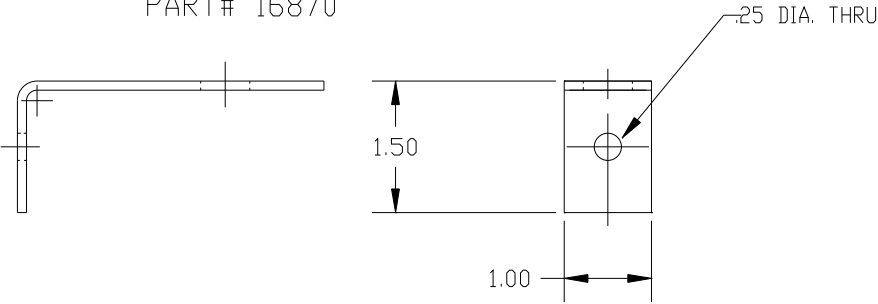
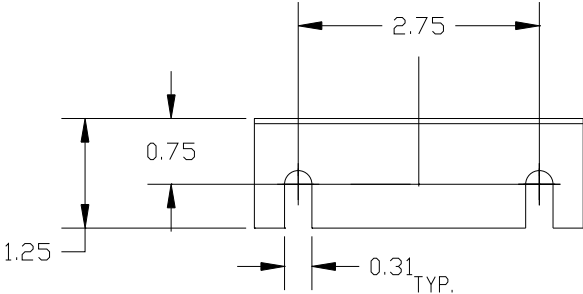


GASKET MATERIAL  
PART# 16846

PART# 16866



PART# 16870



TCL, LLC CLAIMS PROPRIETARY RIGHTS IN THE MATERIAL HEREIN DISCLOSED. IT IS SUPPLIED WITHOUT PREJUDICE TO ANY PATENT RIGHTS OF TCL AND MAY NOT BE REPRODUCED OR USED TO MANUFACTURE ANYTHING SHOWN THEREIN WITHOUT WRITTEN PERMISSION FROM TCL.

NO	REVISION	DATE	BY

TOLERANCES  
(EXCEPT AS NOTED):  
DECIMAL  
.XX ± .03  
.XXX ± .01  
FRACTIONAL  
± 1/32  
ANGULAR  
± 1/2°

**TCL**® W132 N10611 Grant Drive  
Germantown, WI 53022

CAP MOUNTING

DRN. BY	DSW	DATE	10/16/12	DWG. NO.	KCAPBKT1A
SCALE	TO FIT	SIZE		SHT.	1 OF 1