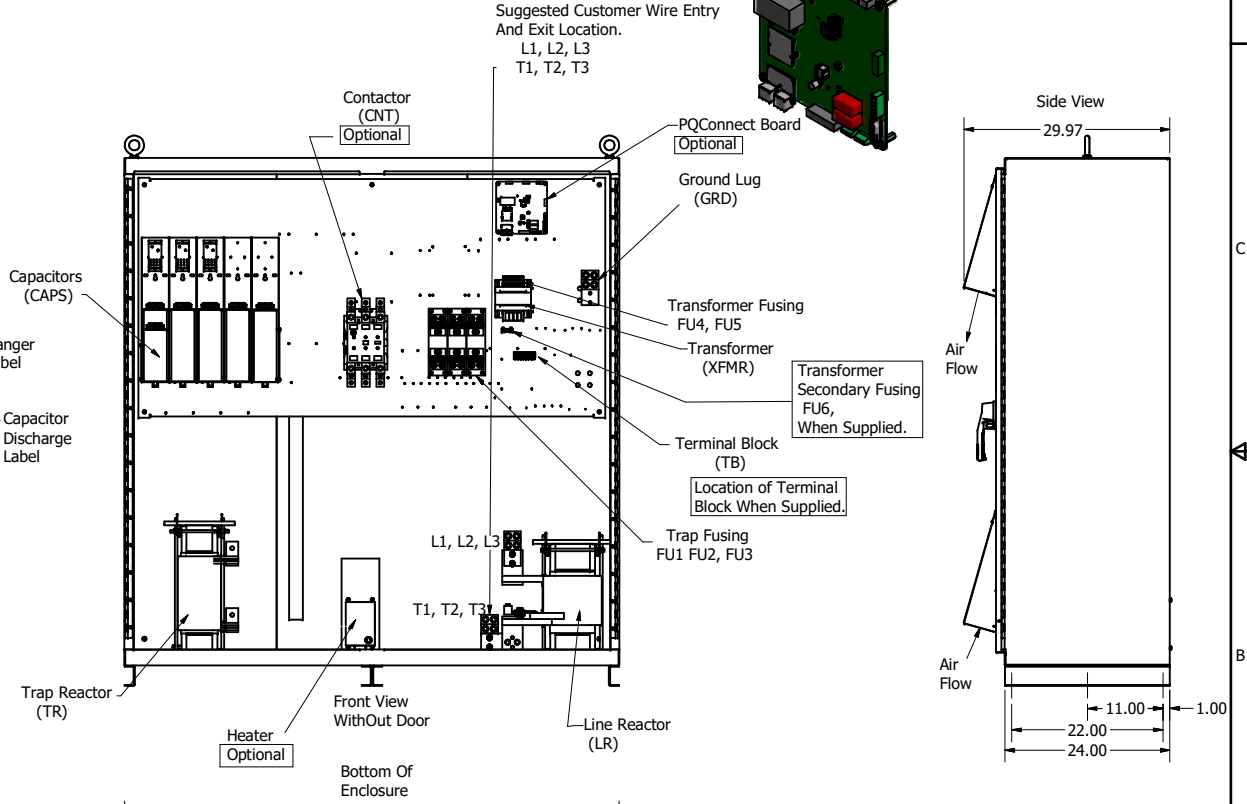
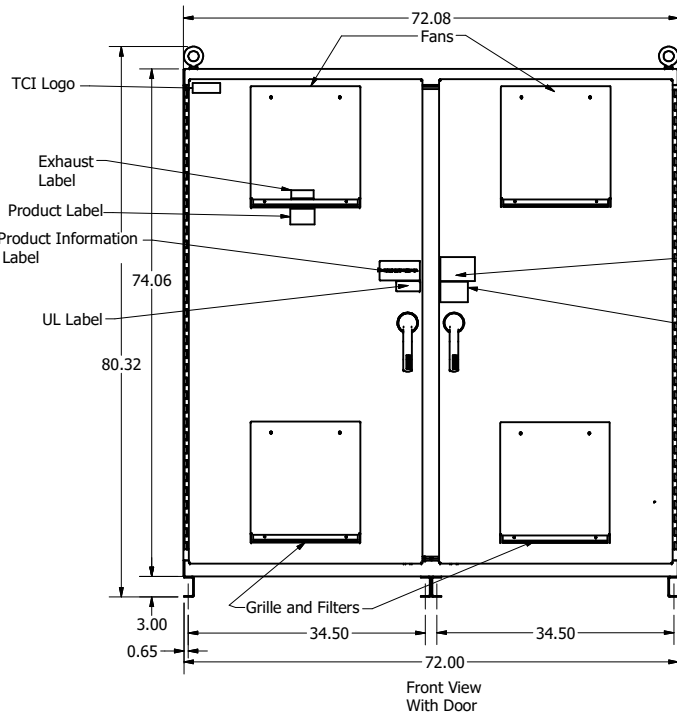
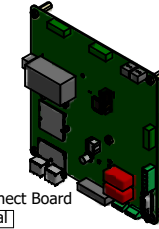


HGP Part Number	HorsePower (HP)	kVar	Harmonic	Voltage (V)	Hz.	Phase
HGP0900AW3----	900	270	5th	480	60	3

HGP Part Number	Schematic Drawing #	Approx Weight (LBS)
HGP0900AW3S0000	28697-5S	3032
HGP0900AW3C0000	28697-5	3048
HGP0900AW3C000H	29597-H	3055
HGP0900AW3S1000	29597-PQ1	3035
HGP0900AW3C1000	29597-PQ	3051
HGP0900AW3C100H	29597-PCH	3056

Customer Connections:
L1, L2, L3, T1, T2, T3, and Ground Lug.
Wire Range: Four, 600 MCM-2 AWG
Tightening Torque: 550 lb-in



HGP0900AW3----						
Components	S0000	C0000	C000H	S1000	C1000	C100H
Line Reactor (LR)	x	x	x	X	X	X
Trap Reactor (TR)	x	x	x	X	X	X
Capacitor (Cap)	x	x	x	X	X	X
Trap Fusing, FU1, FU2, FU3	x	x	x	X	X	X
Contactor (CNT)		x	x		X	X
Transformer (XFMR)	x	x	x	X	X	X
XFMR Fusing, FU4, FU5	x	x	x	X	X	X
Heater			x			X
PQConnect Board				X	X	X

TCI, LLC CLAIMS PROPRIETARY RIGHTS IN THE MATERIAL HEREIN DISCLOSED. IT IS SUPPLIED WITHOUT PREJUDICE TO ANY PATENT RIGHTS OF TCI AND MAY NOT BE REPRODUCED OR USED TO MANUFACTURE ANYTHING SHOWN THEREIN WITHOUT WRITTEN PERMISSION FROM TCI.

REV	DATE	BY	DESCRIPTION
F	11/18/2020	DSW	5454, Schematic Updates
E	4/29/2020	Dave	5169, Trap circuit from 2 to 1
D	6/13/18	DSW	Add PQConnect
NO			REVISION

TOLERANCES (EXCEPT AS NOTED)	
DECIMAL	.XX ± .25 .XXX ± .10
FRACTIONAL	± 1/16
ANGULAR	± 1°

Material(s) Shall be RoHS Compliant

TCI W132 N10611 Grant Drive
Germantown, WI 53022

HarmonicGuard Passive
HGP, 900HP, 480/3/60, Type 3R

105574DG

SCALE: 1/14

SHT 1 OF 1

Customer Is Responsible For Installation to Meet All National And Local Electrical Codes.
NOTE: USE ONLY HUBS OR FITTINGS THAT COMPLY WITH UL514B FOR TYPE 3R ENCLOSURES