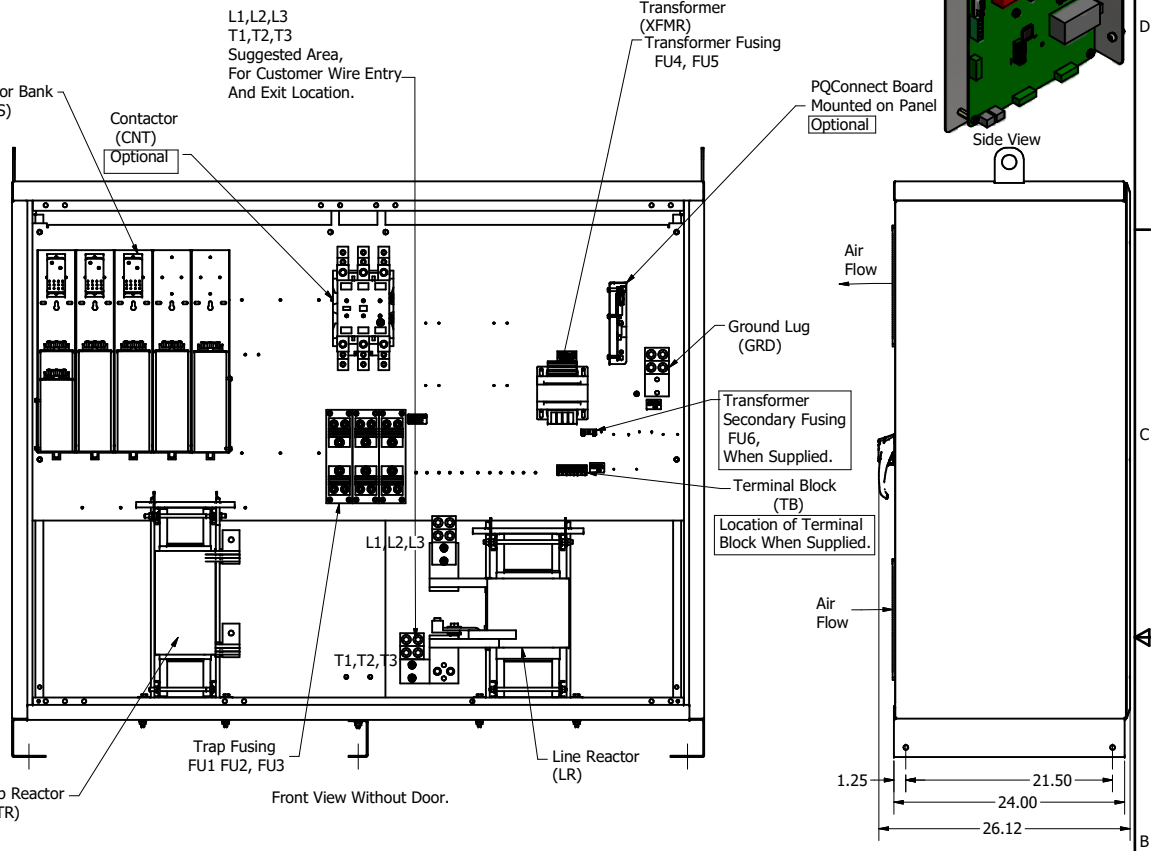
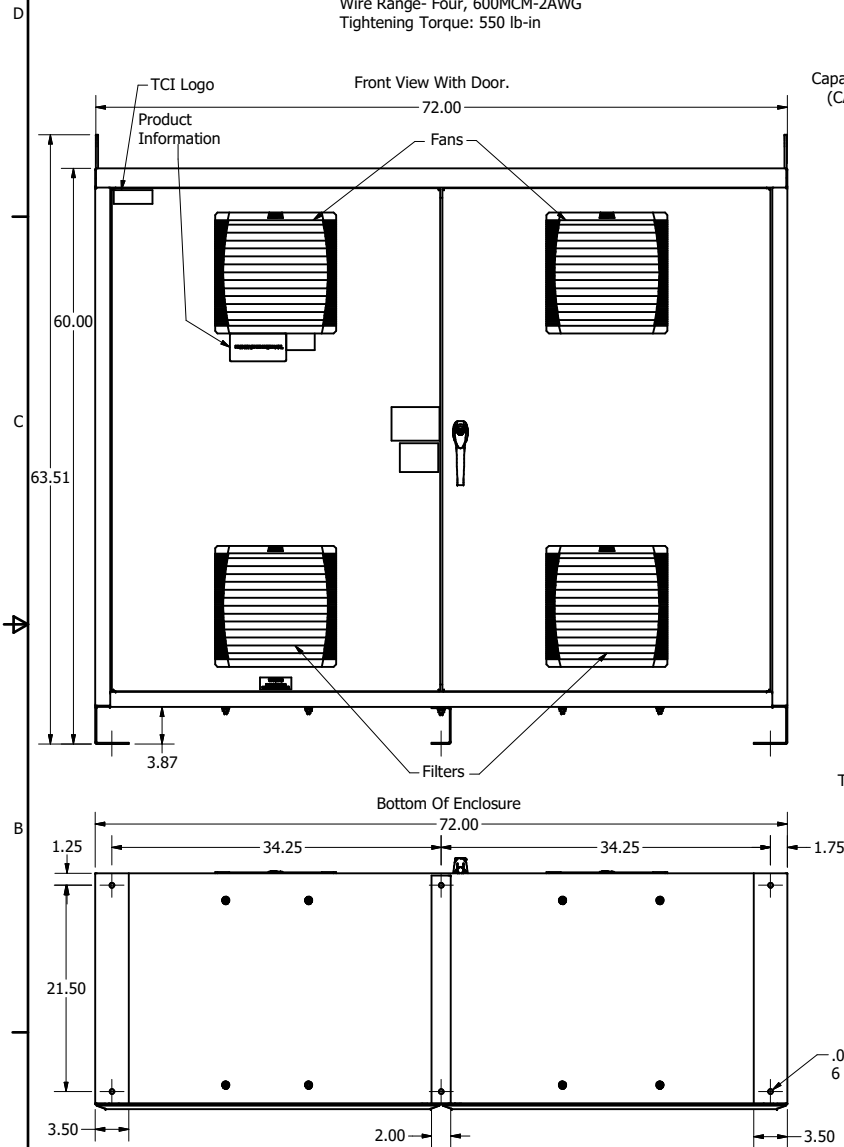
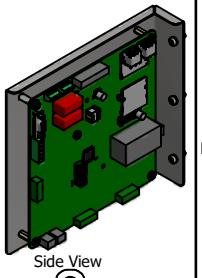


HGP Part Number	HorsePower (HP)	kVar	Harmonic	Voltage (V)	Hz.	Phase
HGP0900AW1---	900	270	5th	480	60	3

Customer Connections:  
L1, L2, L3, T1, T2, T3, and  
Ground Lug.  
Wire Range- Four, 600MCM-2AWG  
Tightening Torque: 550 lb-in

HGP Enclosed Type 1 Part Number	Schematic Drawing #	Approx Weight (LBS)
HGP0900AW1S0000	28697-5S	2000
HGP0900AW1C0000	28697-5	2020
HGP0900AW1S1000	29597-PQ1	2005
HGP0900AW1C1000	29597-PQ	2025



HGP0900AW-----				
Components	1S0000	1C0000	1S1000	1C1000
Line Reactor (LR)	X	X	X	X
Trap Reactor (TR)	X	X	X	X
Capacitor (Cap)	X	X	X	X
Trap Fusing, FU1, FU2, FU3	X	X	X	X
Contactor (CNT)		X		X
Transformer (XFMR)	X	X	X	X
XFMR Fusing, FU4, FU5	X	X	X	X
PQConnect Board			X	X

NO	REVISION	DATE	BY
C	S169, Trap Circuit from 2 to 1	4/29/2020	DSW
B	Add PQ Connect	6/25/18	DSW

TOLERANCES (EXCEPT AS NOTED)	
DECIMAL	FRACTIONAL
.XX ± .25	± 1/16
.XXX ± .10	± 1°

Customer Is Responsible For Installation to Meet All National And Local Electrical Codes.

Material(s) Shall be RoHS Compliant

**TCI** W132 N10611 Grant Drive  
Germantown, WI 53022

HarmonicGuard Passive  
HGP, 900HP, 480/3/60, Type 1

DRN BY: DSW DATE: 4/09/14  
SCALE: 1/10 DRAWN: [Signature] DES: [Signature]

105500DG  
SHT 1 OF 1