

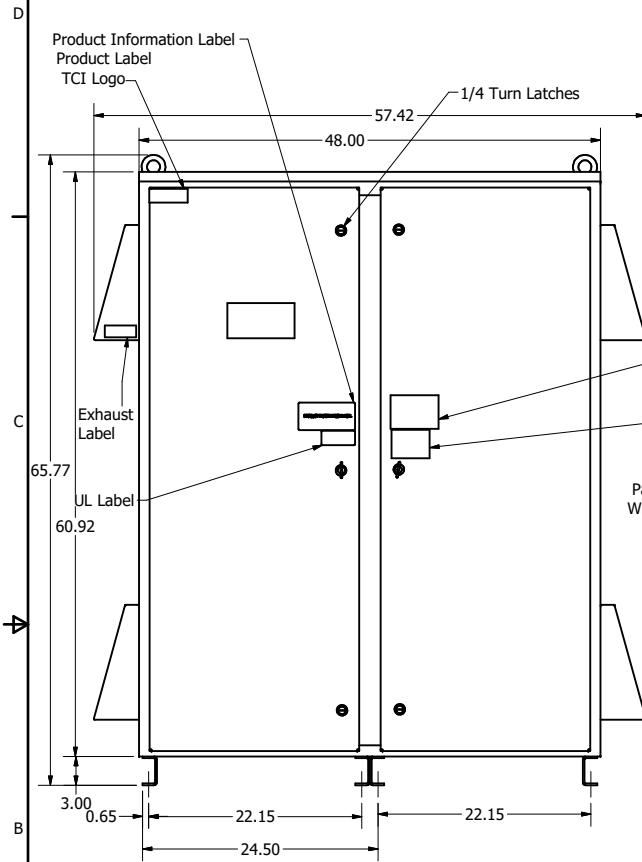
HGP Part Number	HorsePower (HP)	kVar	Harmonic	Voltage (V)	HZ.	Phase
HGP0600AW3----	600	180	5th	480	60	3

Note: For Torque Information See IOM Manual

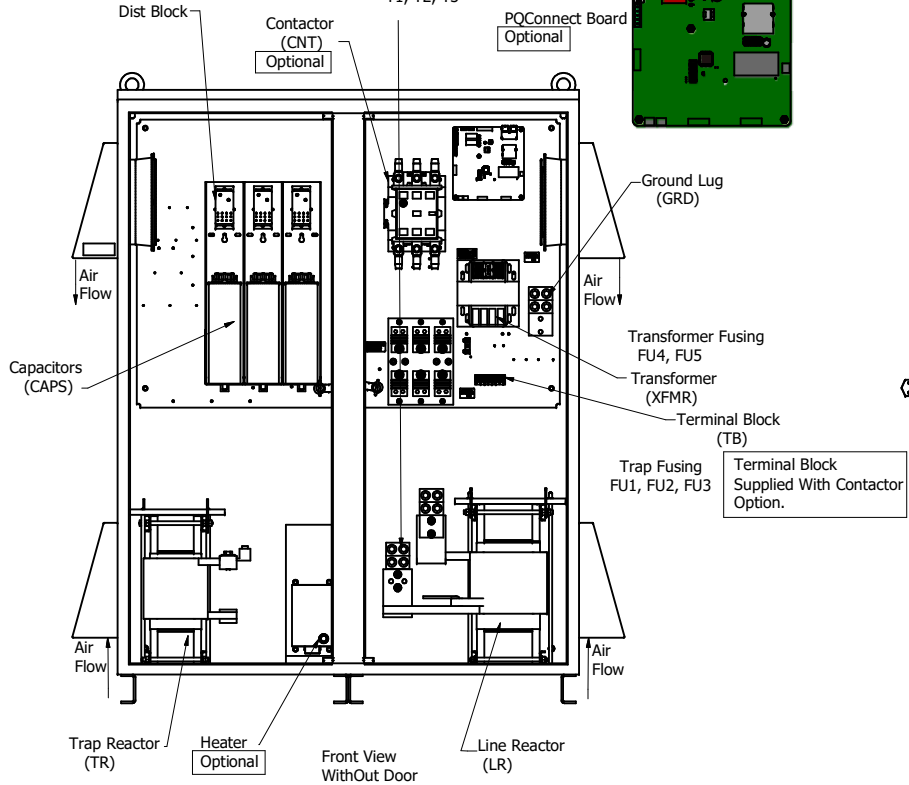
Customer Connections:
L1, L2, L3, T1, T2, T3, and Ground Lug.
Wire Range- Four, 600MCM-2AWG

HGP Part Number	Schematic Drawing #	Approx Weight (LBS)
HGP0600AW3S0000	28697-5S	1224
HGP0600AW3C0000	28697-5	1244
HGP0600AW3C000H	29597-H	1249
HGP0600AW3S1000	29597-PQ1	1227
HGP0600AW3C1000	29597-PQ	1230
HGP0600AW3C100H	29597-PCH	1235

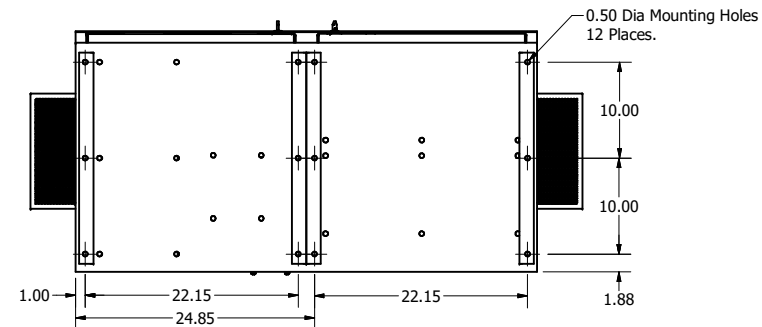
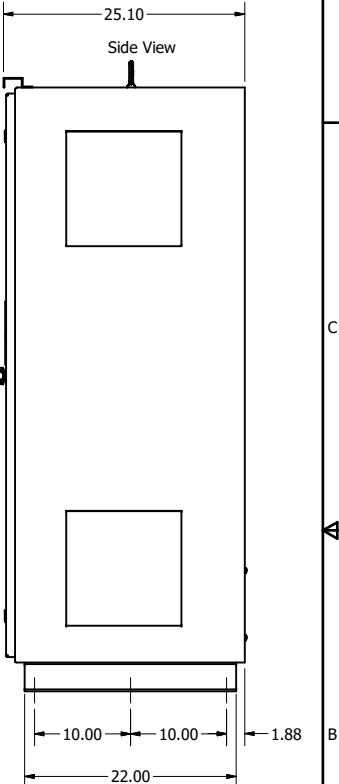
Suggested Customer Wire Entry And Exit Location.
L1, L2, L3
T1, T2, T3



Front View With Door



Front View WithOut Door



Bottom Of Enclosure

HGP0600AW3----						
Components	S0000	C0000	C000H	S1000	C1000	C100H
Line Reactor (LR)	x	x	x	x	x	x
Trap Reactor (TR)	x	x	x	x	x	x
Capacitor (Cap)	x	x	x	x	x	x
Trap Fusing, FU1, FU2, FU3	x	x	x	x	x	x
Contactor (CNT)		x	x		x	x
Transformer (XFMR)	x	x	x	x	x	x
XFMR Fusing, FU4, FU5	x	x	x	x	x	x
Heater			x			x
PQConnect Board				x	x	x

Customer Is Responsible For Installation to Meet All National And Local Electrical Codes.
NOTE: USE ONLY HUBS OR FITTINGS THAT COMPLY WITH UL514B FOR TYPE 3R ENCLOSURES

Material(s) Shall be RoHS Compliant

TCI, LLC CLAIMS PROPRIETARY RIGHTS IN THE MATERIAL HEREIN DISCLOSED. IT IS SUPPLIED WITHOUT PREJUDICE TO ANY PATENT RIGHTS OF TCI AND MAY NOT BE REPRODUCED OR USED TO MANUFACTURE ANYTHING SHOWN THEREIN WITHOUT WRITTEN PERMISSION FROM TCI.				TOLERANCES (EXCEPT AS NOTED)		W132 N10611 Grant Drive Germantown, WI 53022 HarmonicGuard Passive HGP, 600HP, 480/3/60, Type 3R	
D	5452, Line reactor/pt updates	11/18/2020	DSW	DECIMAL	.XX ± .25 .XXX ± .10	FRACATIONAL	± 1/16
C	5454 Schematic update with Heater	11/18/2020	DSW	ANGULAR	± 1°	SCALE:	1/8
B	Add PQconnect	6/11/18	DSW	DATE	4/30/14	REVISED	105571DG
NO	REVISION	DATE	BY	SCALE	1/8	REVISED	105571DG