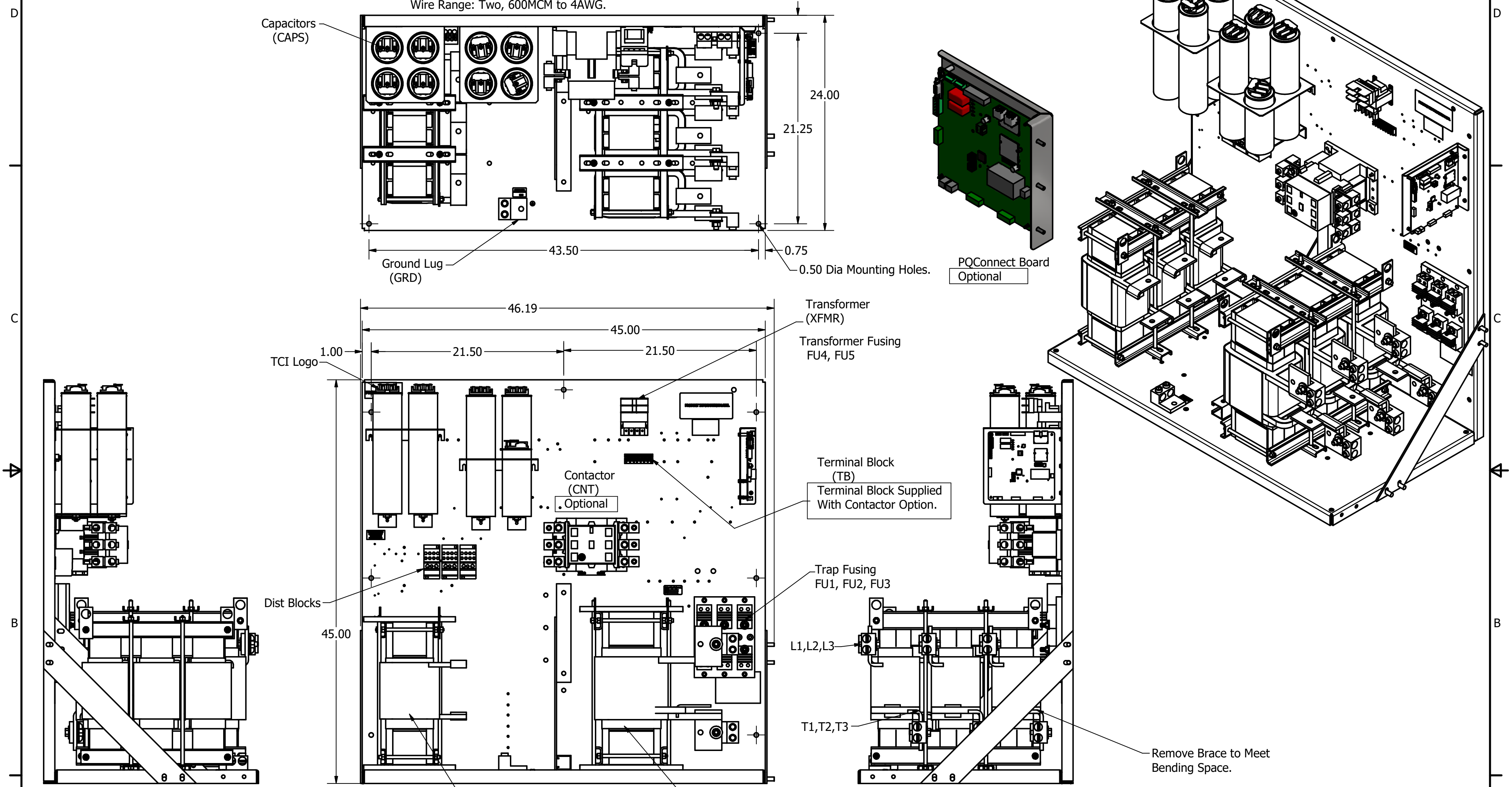


HGP Open Part Number	Schematic Drawing #	Approx Weight (LBS)
HGP0500CW0S0000	29474-3	930
HGP0500CW0C0000	29474-2	950
HGP0500CW0S1000	29474-PQ1	932
HGP0500CW0C1000	29474-PQ	952

Note: For Torque Information See IOM Manual.
Customer Connections.
L1, L2, L3, T1, T2, T3
Wire Range: Two, 600MCM to 4AWG.

HGP Part Number	HorsePower (HP)	kVar	Harmonic	Voltage (V)	Hz.	Phase
HGP0500CW----	500	150	5th	600	60	3

Ground Lug
Wire Range: Two, 600MCM to 4AWG.



Note: Customer is responsible for proper cooling of filter components on open panels.
Capacitors Maximum Ambient 50°C

HGP0500CW----				
Components	0S0000	0C0000	0S1000	0C1000
Line Reactor (LR)	X	X	X	X
Trap Reactor (TR)	X	X	X	X
Capacitor (Cap)	X	X	X	X
Trap Fusing, FU1, FU2, FU3	X	X	X	X
Contactant (CNT)		X		X
Transformer (XFMR)	X	X	X	X
XFMR Fusing, FU4, FU5	X	X	X	X
PQConnect Board			X	X

Customer Is Responsible For Installation to Meet All National And Local Electrical Codes.

Material(s) Shall be RoHS Compliant

TCI, LLC CLAIMS PROPRIETARY RIGHTS IN THE MATERIAL HEREIN DISCLOSED. IT IS SUPPLIED WITHOUT PREJUDICE TO ANY PATENT RIGHTS OF TCI AND MAY NOT BE REPRODUCED OR USED TO MANUFACTURE ANYTHING SHOWN THEREIN WITHOUT WRITTEN PERMISSION FROM TCI.	TOLERANCES (EXCEPT AS NOTED)			W132 N10611 Grant Drive Germantown, WI 53022 HarmonicGuard Passive HGP, 500HP, 600/3/60, Open
	DECIMAL			
	XX ± .25 .XXX ± .10			
	FRACTIONAL ± 1/16			
B 4475 WAS DWG 105897DG	8/27/18	DSW	ANGULAR ± 1°	DRN BY: DSW SCALE: 1/8
NO REVISION	DATE	BY		DATE: 2/3/15 APRVD: 105519DG SIZE C SHT 1 OF 1