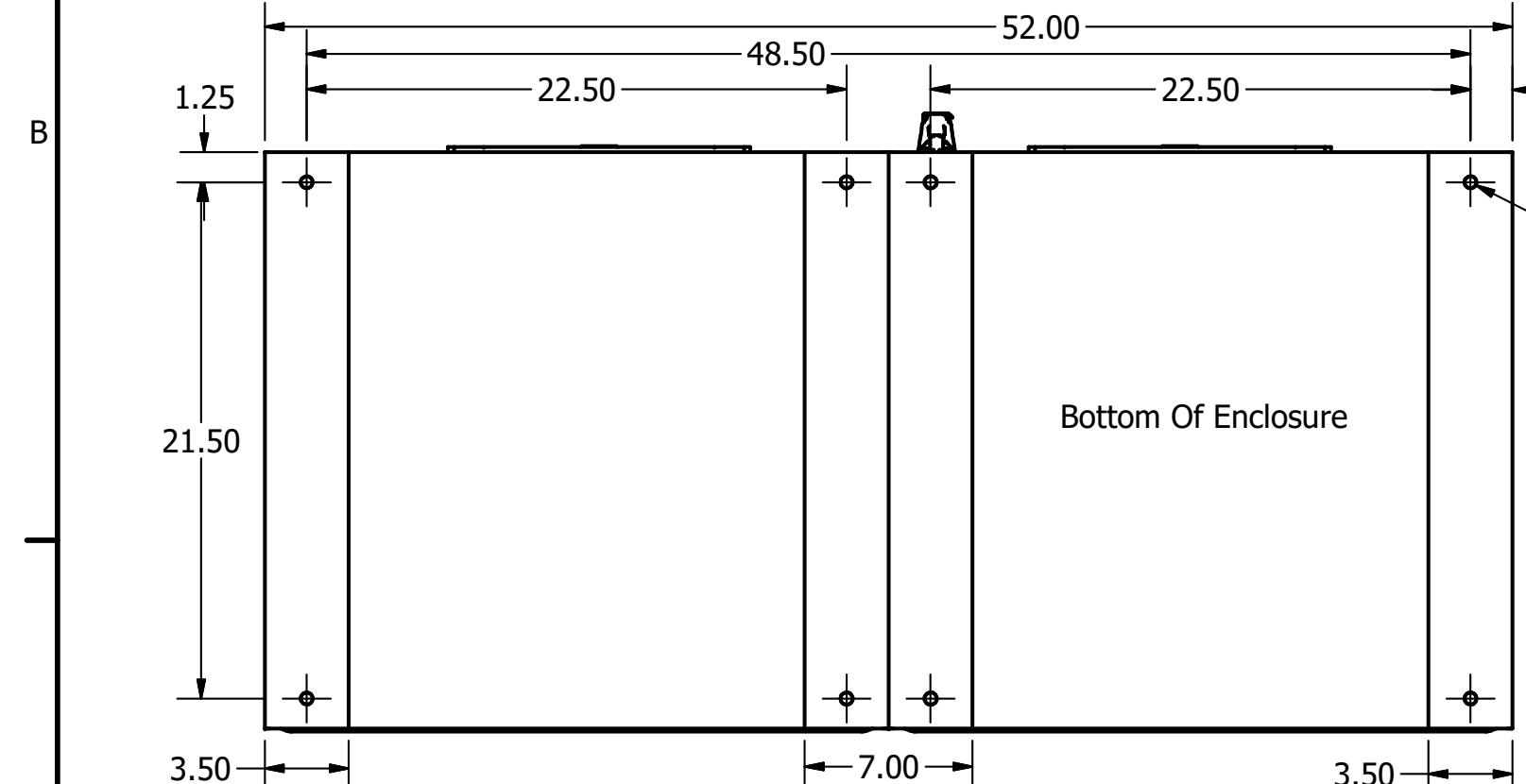
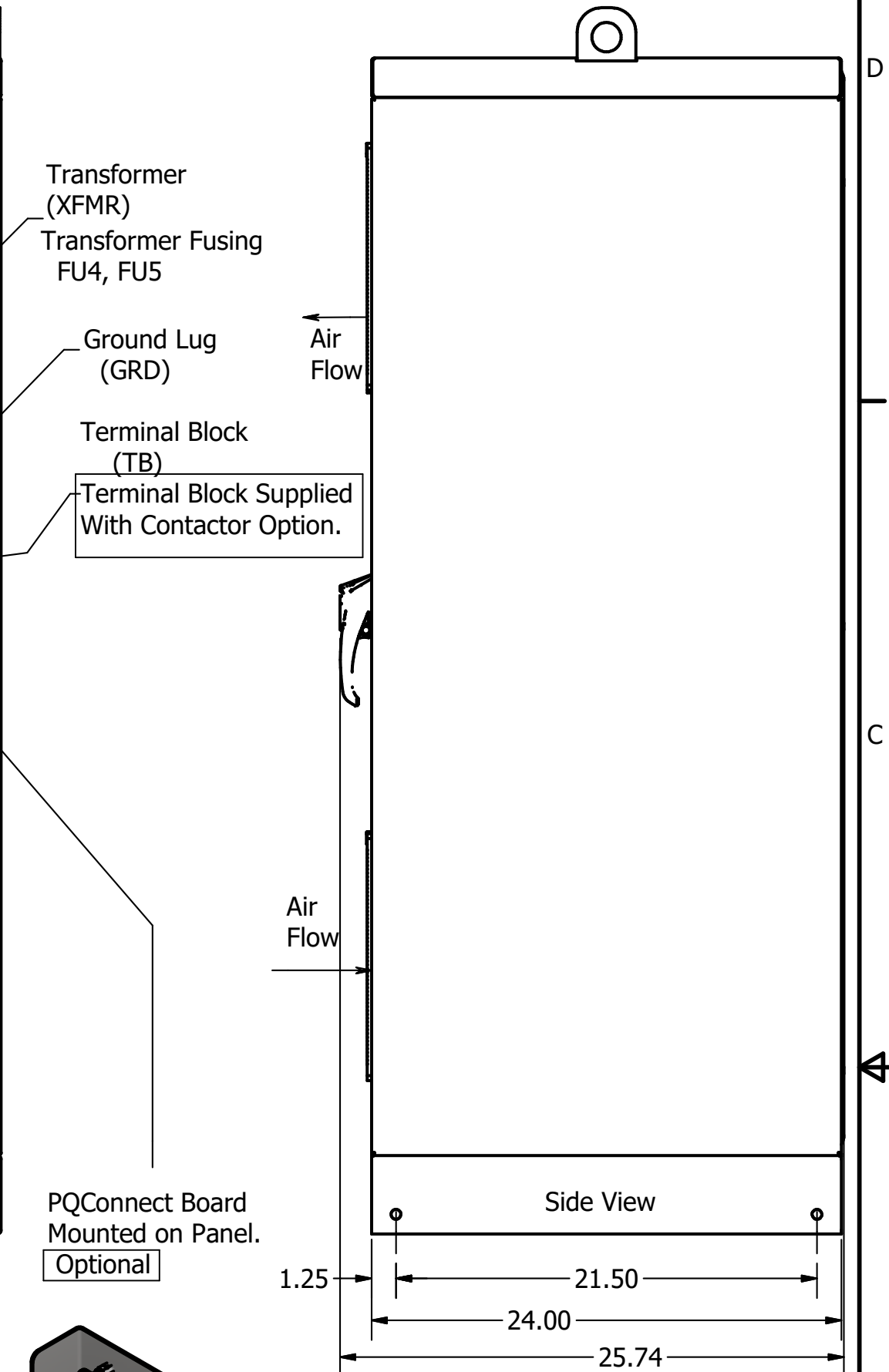
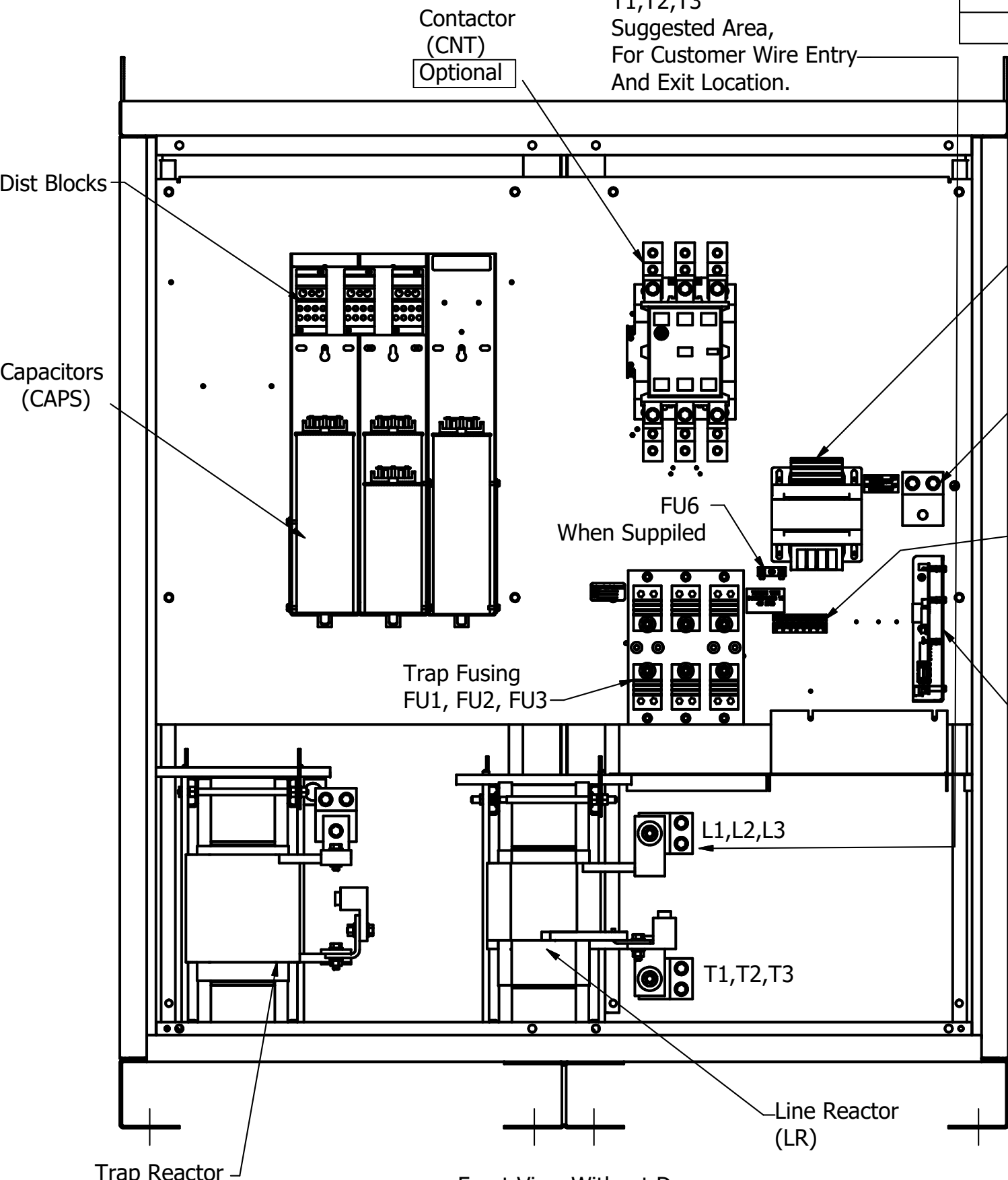
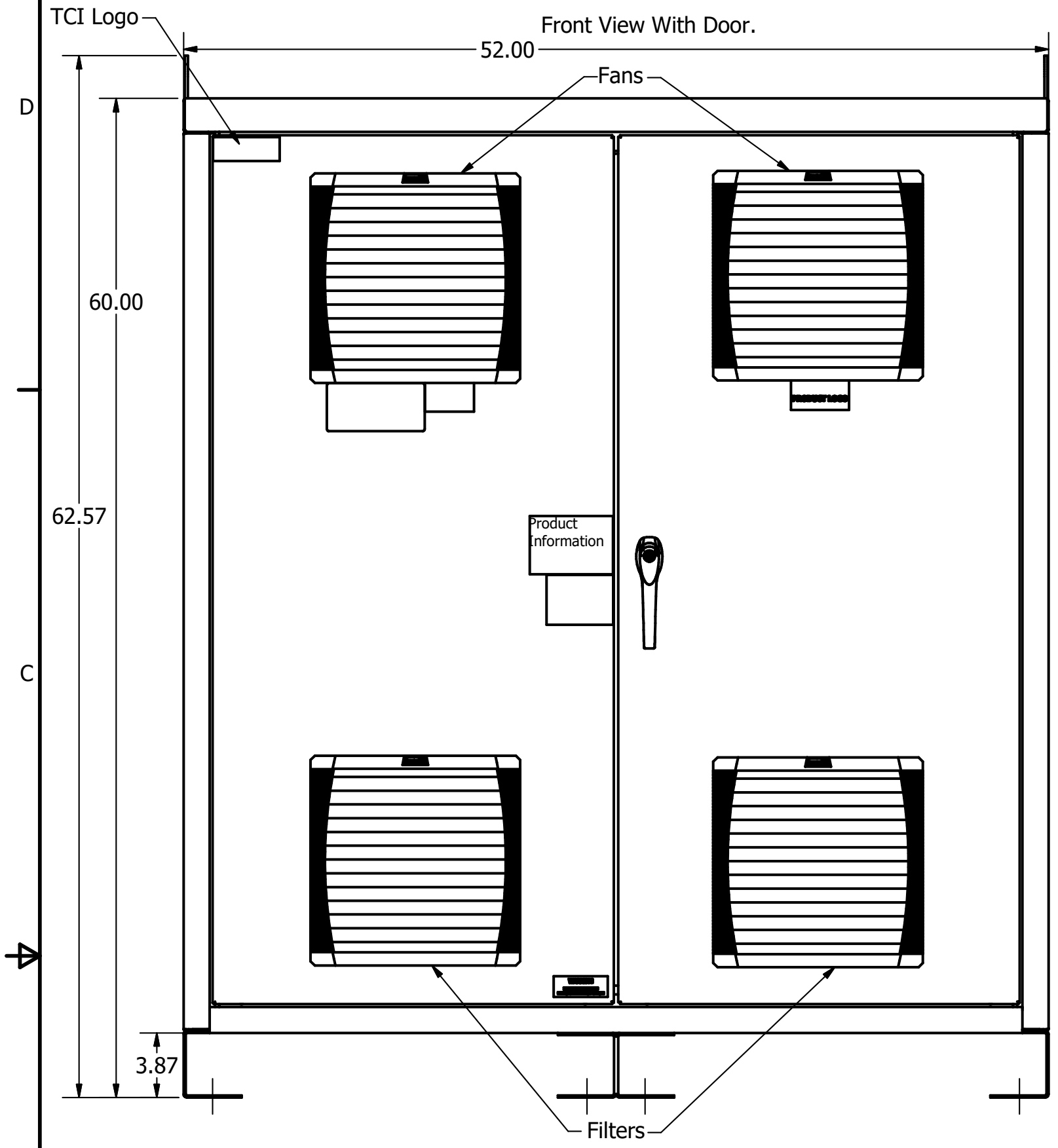


HGP Part Number	HorsePower (HP)	kVar	Harmonic	Voltage (V)	Hz.	Phase
HGP0500AW1---	500	150	5th	480	60	3

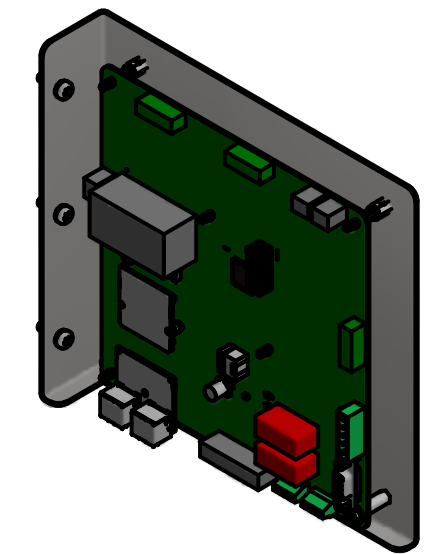
Note: For Torque Information See IOM Manual.

Customer Connections:  
L1, L2, L3, T1, T2, T3, and Ground Lug.  
Wire Range- Two, 600MCM-2AWG

HGP Eclosed Type 1 Part Number	Schematic Drawing #	Approx Weight (LBS)
HGP0500AW1S0000	28697-5S	1011
HGP0500AW1C0000	28697-5	1025
HGP0500AW1S1000	28697-PQ1	1013
HGP0500AW1C1000	29597-PQ	1027



0.50 Dia Mounting Holes  
8 Places.



Components	HGP0500AW-----			
	1S0000	1C0000	1S1000	1C1000
Line Reactor (LR)	X	X	X	X
Trap Reactor (TR)	X	X	X	X
Capacitor (Cap)	X	X	X	X
Trap Fusing, FU1, FU2, FU3	X	X	X	X
Contactor (CNT)		X		X
Transformer (XFMR)	X	X	X	X
XFMR Fusing, FU4, FU5	X	X	X	X
PQConnect Board			X	X

Customer Is Responsible For Installation to Meet All National And Local Electrical Codes.

Material(s) Shall be RoHS Compliant

TCI, LLC CLAIMS PROPRIETARY RIGHTS IN THE MATERIAL HEREIN DISCLOSED. IT IS SUPPLIED WITHOUT PREJUDICE TO ANY PATENT RIGHTS OF TCI AND MAY NOT BE REPRODUCED OR USED TO MANUFACTURE ANYTHING SHOWN THEREIN WITHOUT WRITTEN PERMISSION FROM TCI.	TOLERANCES (EXCEPT AS NOTED)		W132 N10611 Grant Drive Germantown, WI 53022  HarmonicGuard Passive HGP, 500HP, 480/3/60, Type 1
	DECIMAL		
	.XX ± .25 .XXX ± .10		
	FRACTIONAL ± 1/16		
C Add PQ Connect	6/20/18	DSW	DRN BY: DSW DATE: 4/9/14 SCALE: 1/8 APRVD: [Signature] SIZE: C SHT 1 OF 1
NO REVISION	DATE	BY	