

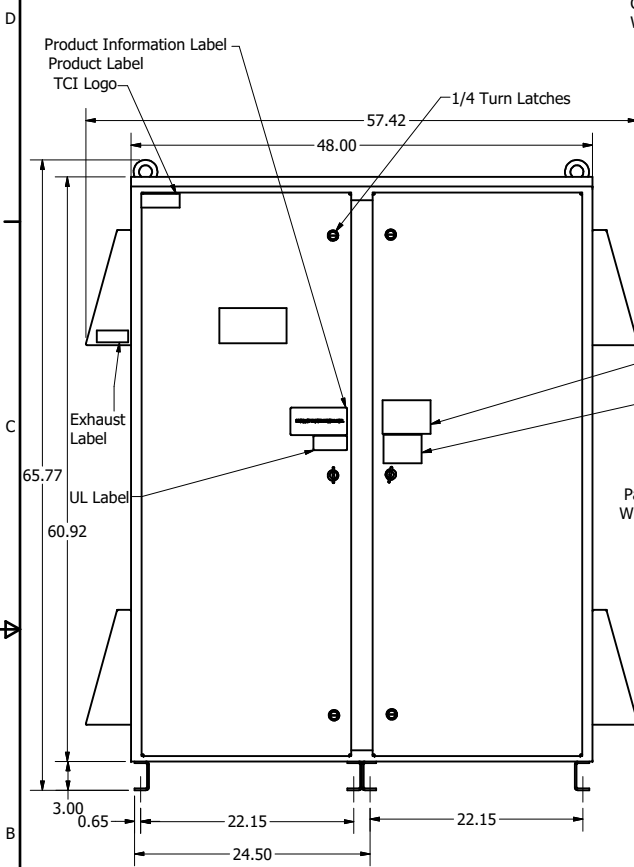
HGP Part Number	HorsePower (HP)	kVar	Harmonic	Voltage (V)	HZ.	Phase
HGP0450AW3----	450	135	5th	480	60	3

Note: For Torque Information See IOM Manual

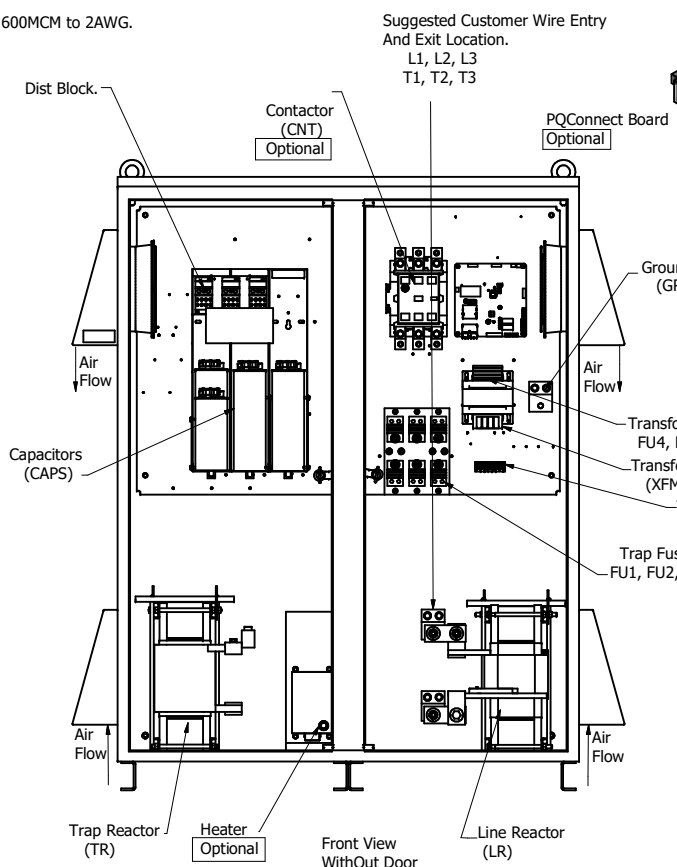
Customer Connections.  
L1, L2, L3, T1, T2, T3  
Wire Range: Two, 600MCM to 2AWG.

Ground Lug  
Wire Range: Two, 600MCM to 2AWG.

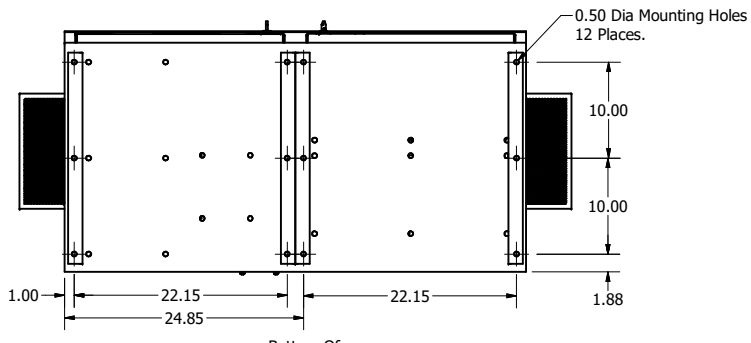
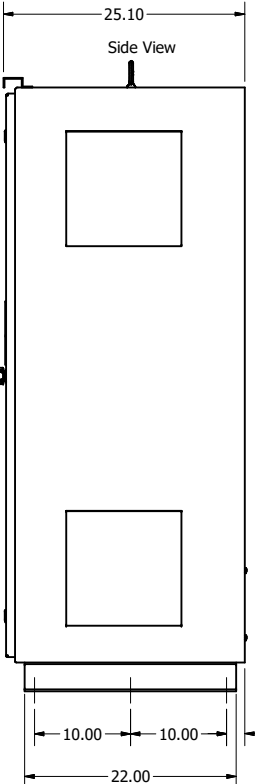
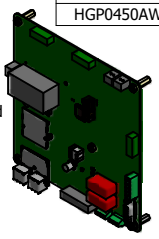
HGP Part Number	Schematic Drawing #	Approx Weight (LBS)
HGP0450AW3S0000	28697-5S	995
HGP0450AW3C0000	28697-5	1004
HGP0450AW3C000H	29597-H	1009
HGP0450AW3S1000	29597-PQ1	998
HGP0450AW3C1000	29597-PQ	1007
HGP0450AW3C100H	29597-PCH	1011



Front View With Door



Front View WithOut Door



Bottom Of Enclosure

HGP0450AW3----						
Components	S0000	C0000	C000H	S1000	C1000	C100H
Line Reactor (LR)	x	x	x	X	X	X
Trap Reactor (TR)	x	x	x	X	X	X
Capacitor (Cap)	x	x	x	X	X	X
Trap Fusing, FU1, FU2, FU3	x	x	x	X	X	X
Contactor (CNT)		x	x		X	X
Transformer (XFMR)	x	x	x	X	X	X
XFMR Fusing, FU4, FU5	x	x	x	X	X	X
Heater			x			X
PQConnect Board				X	X	X

Customer Is Responsible For Installation to Meet All National And Local Electrical Codes.

NOTE: USE ONLY HUBS OR FITTINGS THAT COMPLY WITH UL514B FOR TYPE 3R ENCLOSURES

Material(s) Shall be RoHS Compliant

TCI, LLC CLAIMS PROPRIETARY RIGHTS IN THE MATERIAL HEREIN DISCLOSED. IT IS SUPPLIED WITHOUT PREJUDICE TO ANY PATENT RIGHTS OF TCI AND MAY NOT BE REPRODUCED OR USED TO MANUFACTURE ANYTHING SHOWN THEREIN WITHOUT WRITTEN PERMISSION FROM TCI.				TOLERANCES (EXCEPT AS NOTED) DECIMAL .XX ± .25 .XXX ± .10 FRACTIONAL ± 1/16 ANGULAR ± 1°		<b>TCI</b> W132 N10611 Grant Drive Germantown, WI 53022 HarmonicGuard Passive HGP, 450HP, 480/3/60, Type 3R 105569DG	
D	5454, Schematic updates	11/18/2020	DSW	DRN BY	DATE	4/29/14	105569DG
C	4770, PQ Harness Added	6/6/19	DSW	SCALE	1/8	DRWN	REV
B	Add PQconnect	6/11/18	DSW	SCALE	1/8	DRWN	REV
NO	REVISION	DATE	BY	SCALE	1/8	DRWN	REV