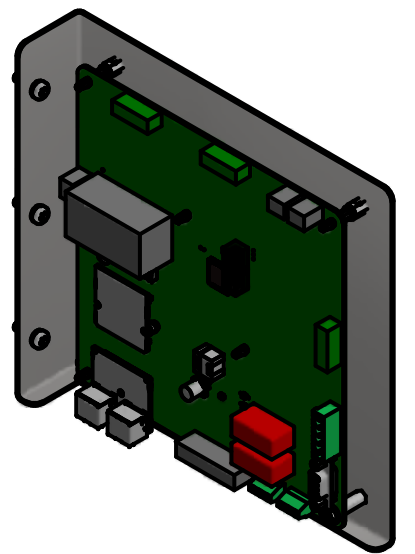
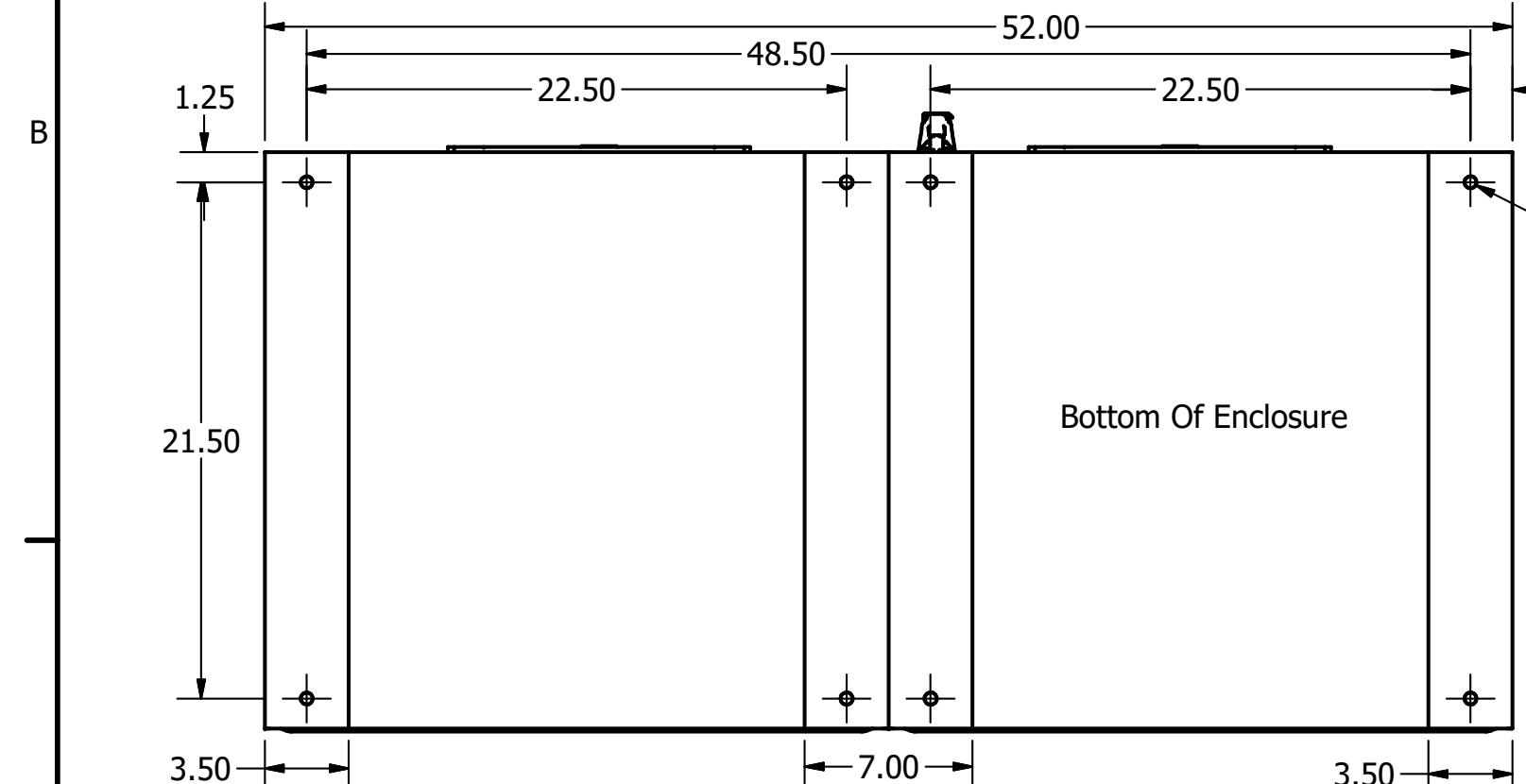
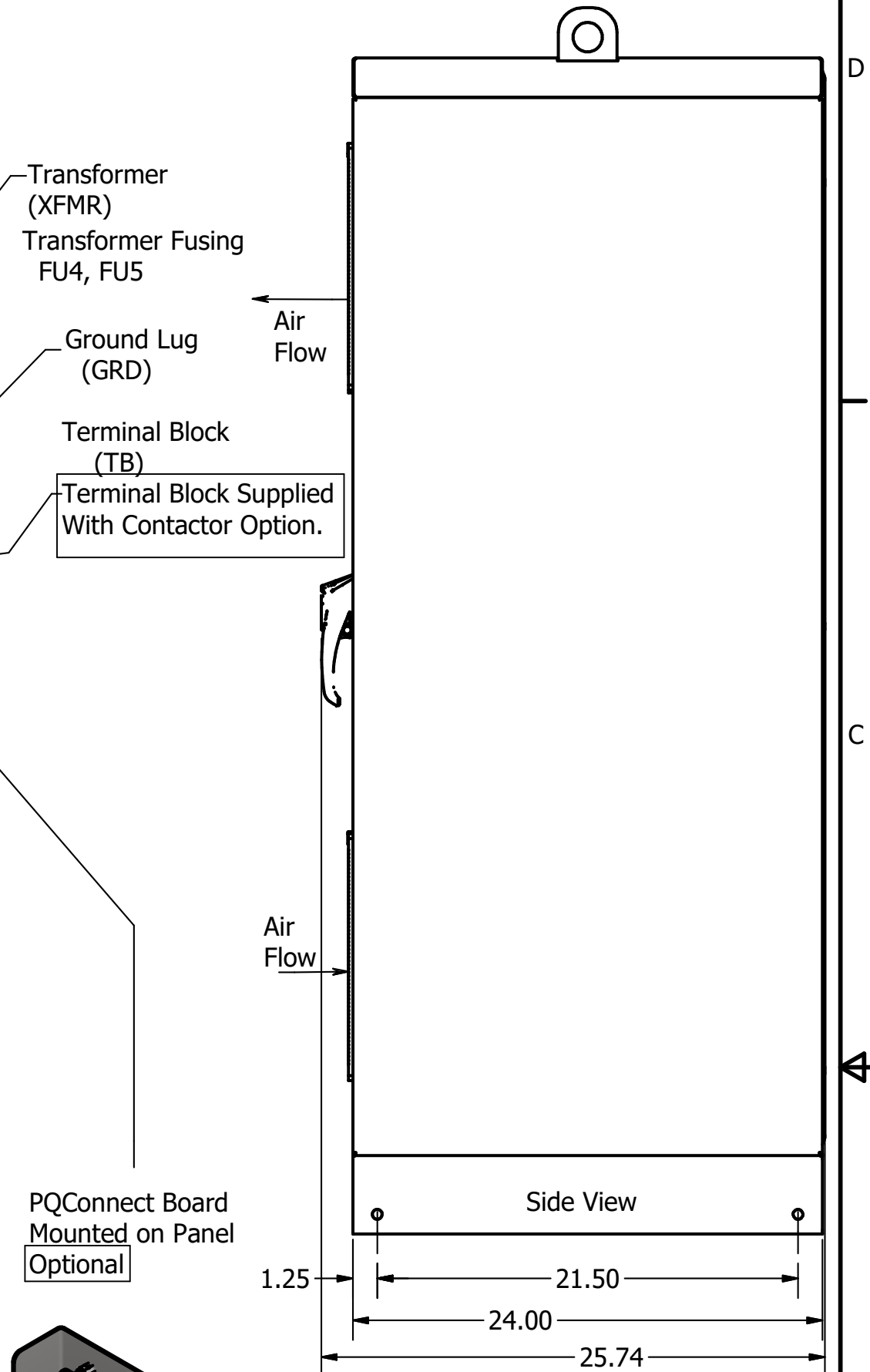
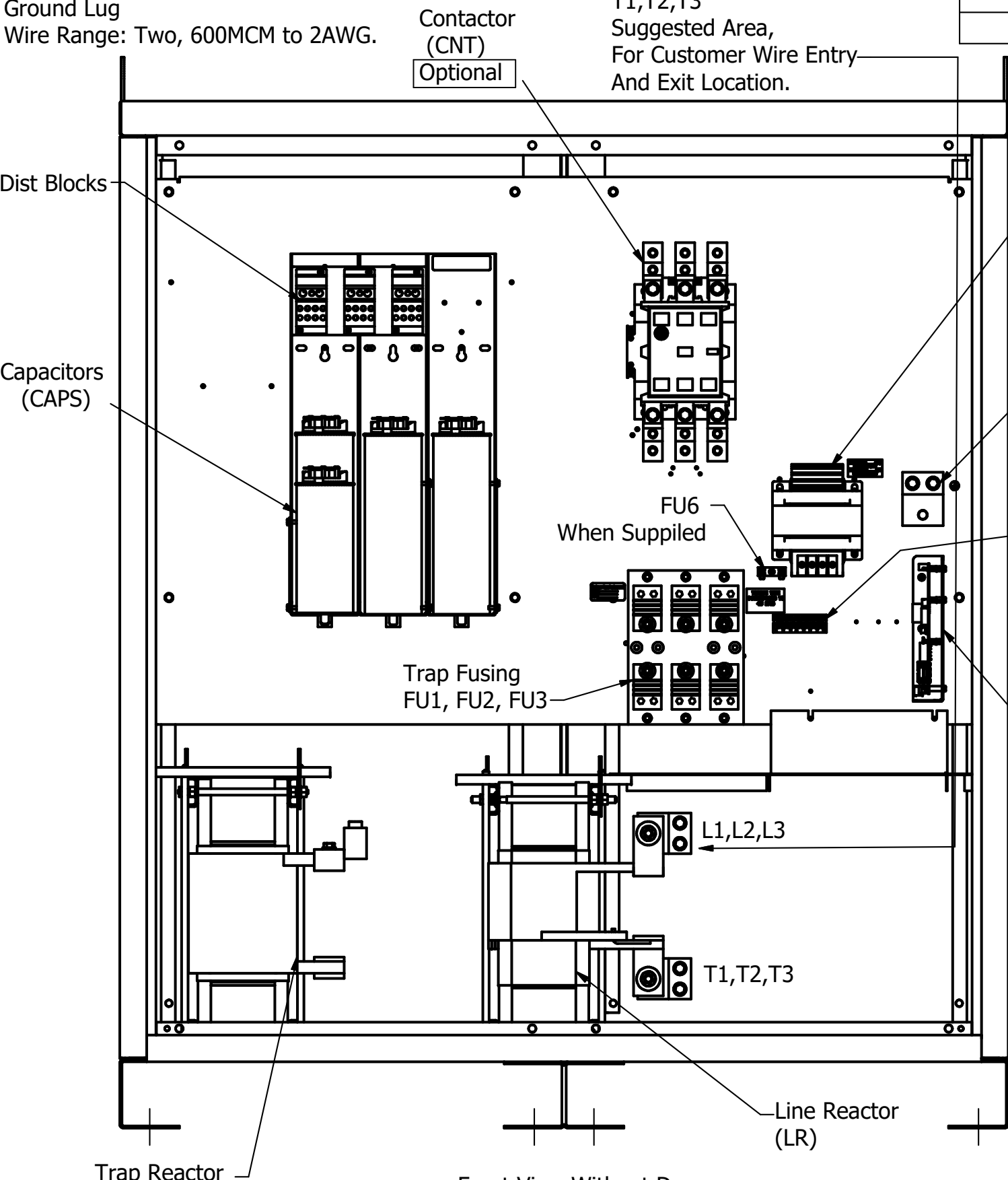
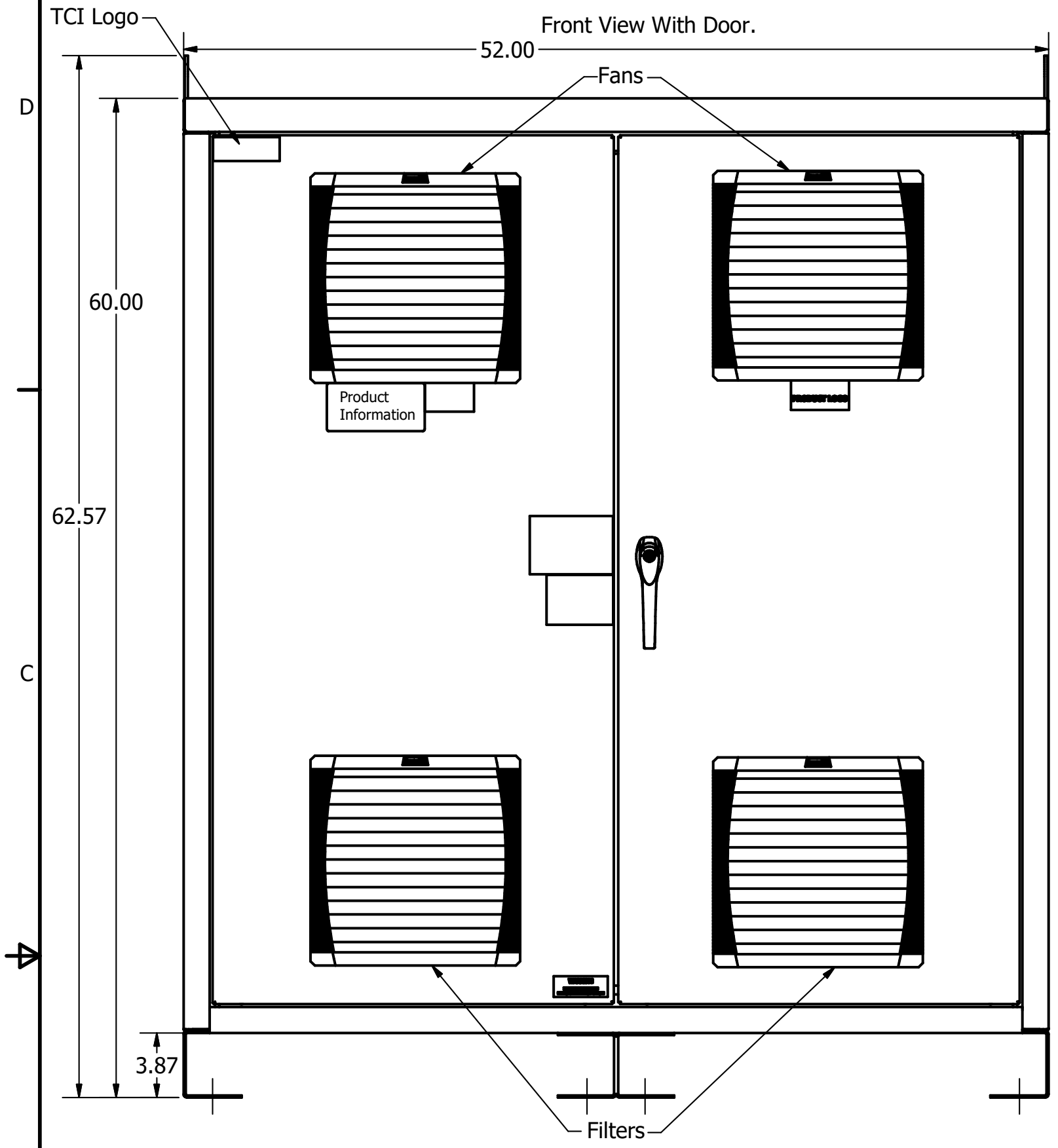


HGP Part Number	HorsePower (HP)	kVar	Harmonic	Voltage (V)	Hz.	Phase
HGP0450AW1---	450	135	5th	480	60	3

Customer Connections.
L1, L2, L3, T1, T2, T3
Wire Range: Two, 600MCM to 2AWG.

Note: For Torque Information
See IOM Manual.

HGP Eclosed Type 1 Part Number	Schematic Drawing #	Approx Weight (LBS)
HGP0450AW1S0000	28697-5S	1000
HGP0450AW1C0000	28697-5	1010
HGP0450AW1S1000	28697-PQ1	1002
HGP0450AW1C1000	29597-PQ	1012



Components	HGP0450AW-----			
	1S0000	1C0000	1S1000	1C1000
Line Reactor (LR)	X	X	X	X
Trap Reactor (TR)	X	X	X	X
Capacitor (Cap)	X	X	X	X
Trap Fusing, FU1, FU2, FU3	X	X	X	X
Contactor (CNT)		X		X
Transformer (XFMR)	X	X	X	X
XFMR Fusing, FU4, FU5	X	X	X	X
PQConnect Board			X	X

Customer Is Responsible For Installation to Meet All National And Local Electrical Codes.

Material(s) Shall be RoHS Compliant

TCI, LLC CLAIMS PROPRIETARY RIGHTS IN THE MATERIAL HEREIN DISCLOSED. IT IS SUPPLIED WITHOUT PREJUDICE TO ANY PATENT RIGHTS OF TCI AND MAY NOT BE REPRODUCED OR USED TO MANUFACTURE ANYTHING SHOWN THEREIN WITHOUT WRITTEN PERMISSION FROM TCI.	TOLERANCES (EXCEPT AS NOTED)		W132 N10611 Grant Drive Germantown, WI 53022 HarmonicGuard Passive HGP, 450HP, 480/3/60, Type 1
	DECIMAL		
	.XX ± .25 .XXX ± .10		
	FRACTIONAL ± 1/16		
C Add PQ Connect	6/20/18	DSW	DRN BY: DSW DATE: 3/10/14 SCALE: 1/8 APRVD: SIZE: C NO REVISION DATE BY ANGLAR ± 1°
			105495DG SHT 1 OF 1